



NATS UK
Standard Route Document
Front-End User Guide
for
Version 2

Table of Contents

| | |
|---|-----------|
| Introduction..... | 1 |
| Installing The NATS Standard Route Document Front-End..... | 2 |
| Minimum System Requirements | 2 |
| Installation Process..... | 2 |
| Starting The NATS Standard Route Document Front-End | 5 |
| Main User Window..... | 6 |
| Search Criteria | 7 |
| Search Results..... | 8 |
| Example Search..... | 9 |
| Operations..... | 10 |
| Setting Search Criteria | 10 |
| UK Dep, UK Entry Point, UK Exit Point and UK Des | 10 |
| Via | 10 |
| General..... | 10 |
| Searching The Database | 10 |
| Displaying Remarks | 11 |
| Copying Route Data..... | 11 |
| Printing Route Data..... | 11 |
| End Of Document | 12 |

Introduction

The NATS Standard Route Document Front-End program enables users to determine NATS-preferred routes for navigating UK airspace. The routes supplied in this database are the result of extensive analysis of previously filed data, and attempt to rationalise routings into a standard set.

All routes have been validated by the relevant UK ATC units.

N.B. The routes provided by this software are NATS's best suggestions to allow efficient processing by it's DP systems; but, any routes provided should not be considered mandatory.

Installing The NATS Standard Route Document Front-End

N.B.

- 1. Users not installing the NATS Standard Route Document Front-End application in accordance with the following procedure, do so at their own risk.***
- 2. After installation ensure that the file NATSUKSRDU.DAT is in the same folder as the application's executable.***

Minimum System Requirements

Hardware

133 MHz processor.

32 Mb RAM.

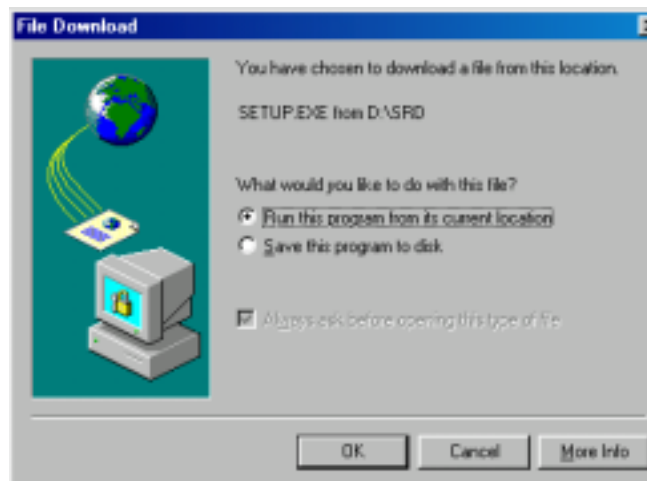
10Mb disk space.

Operating System

Microsoft Windows 95, 98 or NT.

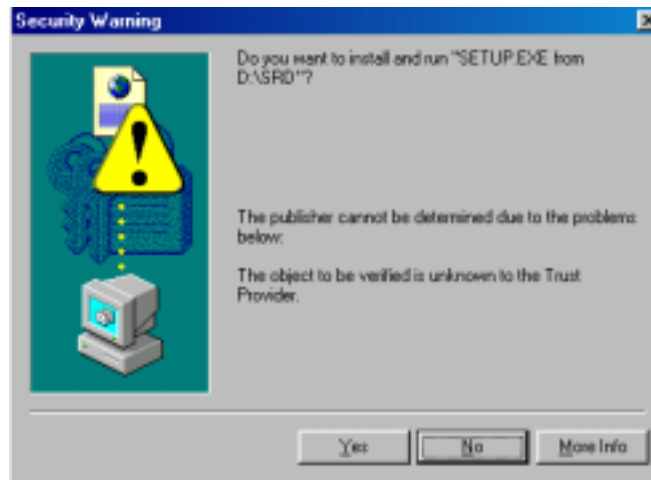
Installation Process

After initiating the installation process from the AIP CD-ROM your HTML browser may, depending upon its currently set options, display a panel requiring you to select running the setup program from the CD or saving to disk; e.g. Internet Explorer displays following window:

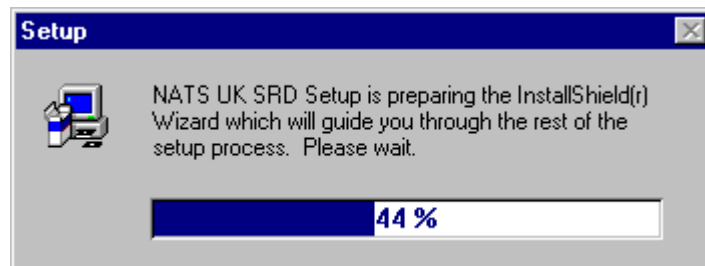


Ensure the “Run this program from its current location” option is selected, then click “OK”.

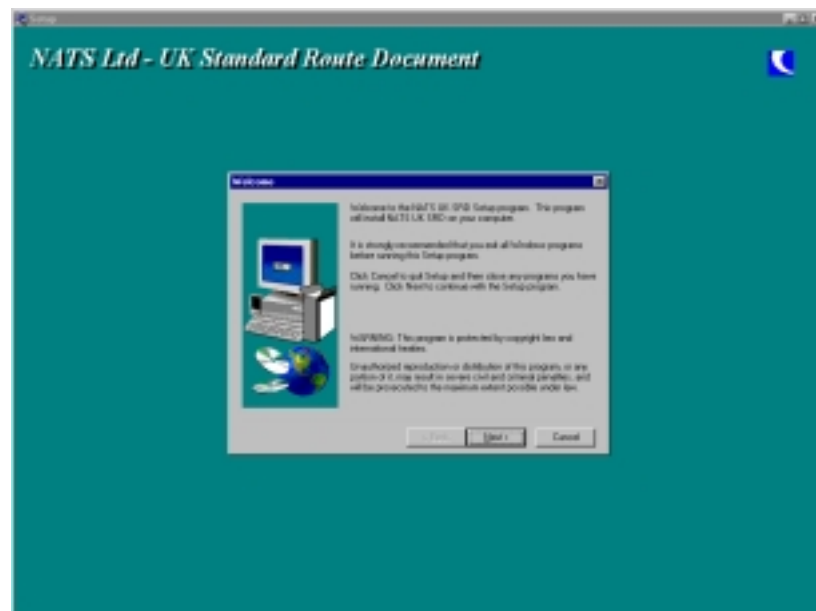
Your HTML browser may, depending upon its currently set options, display a security warning panel; e.g. Internet Explorer displays the following window:



Click "Yes" and the NATS UK SRD Setup program then displays the following progress window for about 15 seconds.

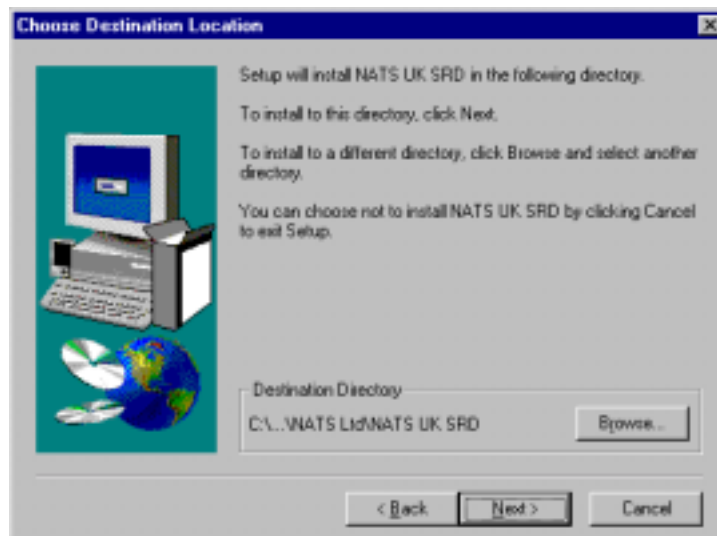


The "Setup" window containing a "Welcome" window is displayed, as shown below:



Click "Next" to proceed with the installation; or "Cancel" to abandon installation.

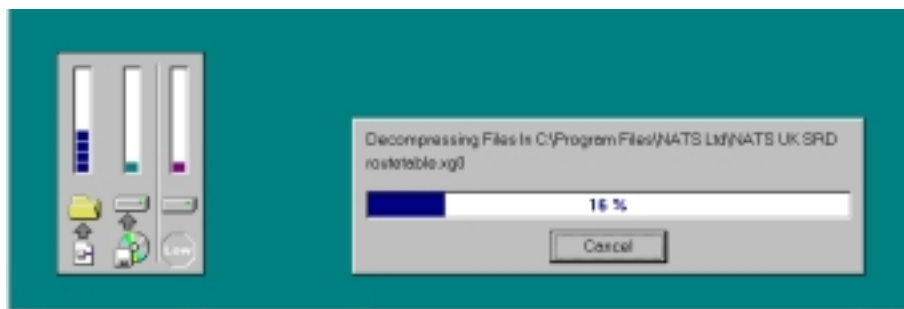
If "Next" has been clicked, the "Choose Destination Location" window is displayed as shown below:



The “Choose Destination Location” window gives specialist users the opportunity to install the program in a location other than the default. The default location is:

C:\Program Files\NATS Ltd\NATS UK SRD

To proceed with the installation, click “Next”. The installation process continues and the following progress bars are displayed:



When the installation process is complete, the “Setup” window disappears and the user is returned the AIP CD-ROM display.

Starting The NATS Standard Route Document Front-End

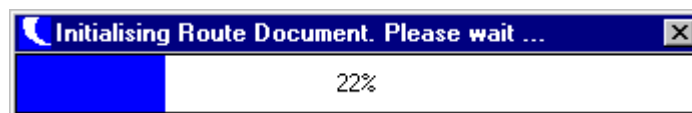
To start the NATS Standard Route Document program, double-click the “NATS UK SRD” icon on your WindowsTM Desktop.



The program will start loading and display the “launch” window:



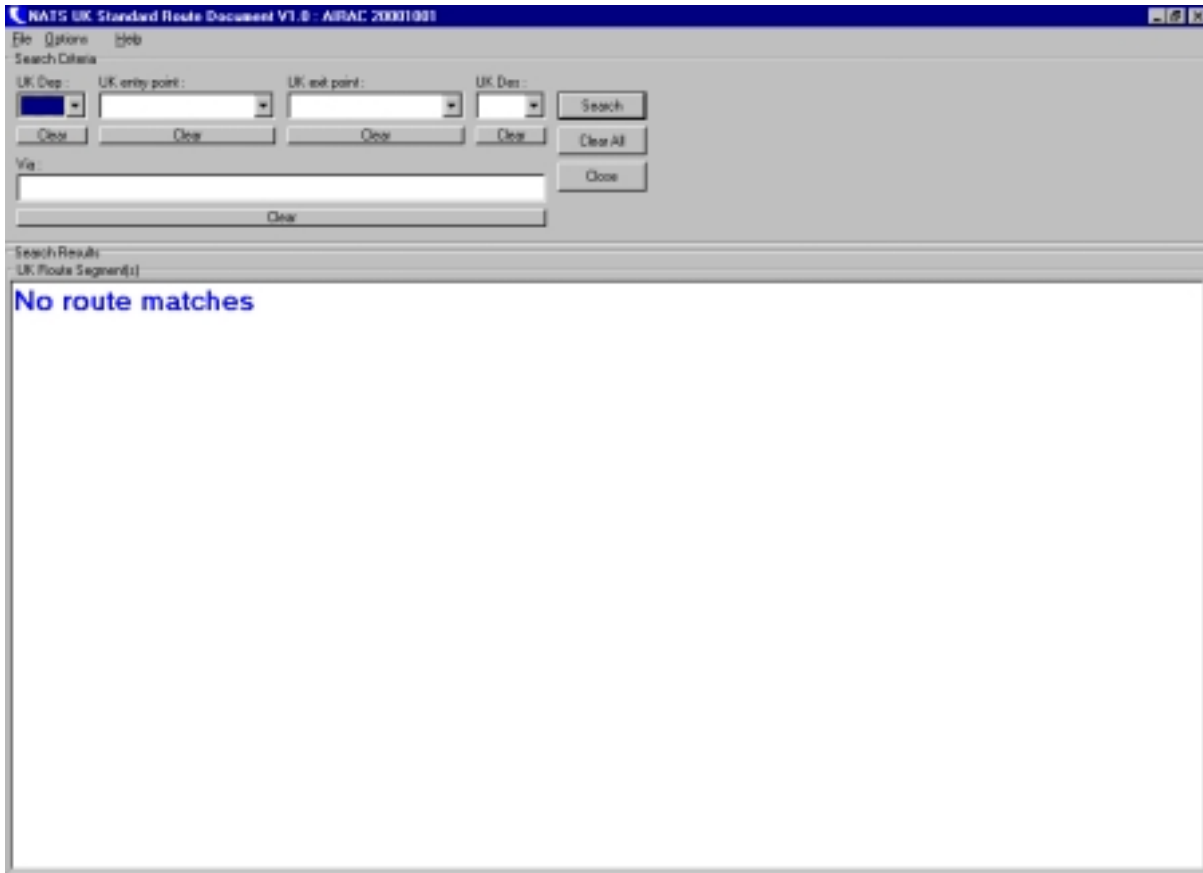
When the program has fully loaded the main user window will appear followed by the database initialisation progress indicator:



When initialisation is complete, the progress indicator will disappear and the program is ready for use.

Main User Window

This window allows the user to search and browse the UK Standard Route Document database; and, where available, to view remarks associated with a particular route. The illustration below shows the window in its initialised state immediately after starting the application.



The main user window contains two areas:

- **Search Criteria**
Used to determine how the NATS Standard Route Document database is searched.
- **Search Results**
Used to display the results of the database search.

The contents of these areas are described overleaf.

Search Criteria

| Item | Description |
|-------------------------|--|
| UK Dep | The UK departure aerodrome (if applicable) to include in the search. <i>N.B. Can not be used with UK entry point.</i> |
| UK entry point | The UK airspace entry point (if applicable) to include in the search. <i>N.B. Can not be used with UK Dep.</i> |
| UK exit point | The UK airspace exit point (if applicable) to include in the search. <i>N.B. Can not be used with UK Des.</i> |
| UK Des | The UK destination aerodrome (if applicable) to include in the search. <i>N.B. Can not be used with UK exit point.</i> |
| Via | A list of partial UK route-segments to be used in the search (if required). |
| Search button | When operated, initiates the database search. <i>N.B. This is the default button for the “Enter” key.</i> |
| Clear All button | When operated, clears all search criteria. <i>N.B. This is the default button for the “Esc” key.</i> |
| Close button | When operated, terminates the NATS Standard Route Document front-end application. |

Search Results

| Item | Description |
|----------------------------|---|
| Remarks button | When operated, causes the Remarks Viewer window to be displayed (if any remarks are available for the selected route). |
| Route Display box | Formatted display of the route selected in the UK Route-Segment(s) area. |
| Copy button | When operated, causes the Route Display data to be copied to the operating system clipboard for use by other applications. |
| UK Route Segment(s) | <p>R When displayed, indicates remarks are available for the route.</p> <p>Min Minimum UK level for the route. (MC = Minimum Cruise)</p> <p>Max Maximum UK level for the route.</p> <p>UK Dep The UK departure aerodrome for the route.</p> <p>UK Entry The UK entry point for the route.</p> <p>UK SID The SID for the departure aerodrome.</p> <p>UK Route-Segment The UK route-segment.</p> <p>UK STAR The STAR for the destination aerodrome.</p> <p>UK Exit The UK exit point for the route.</p> <p>UK Des The UK destination aerodrome for the route.</p> |

Example Search

NATS UK Standard Route Document V1.0 - AIRAC 20001001

File Options Help

Search Criteria

UK Dep: UK entry point: UK exit point: UK Des:

Via

Search Results

Rev: 2000

| RI | Min | Max | UK Dep | UK SID | UK Route-Segment | UK STAR | UK Des |
|-----|-----|------|-------------|-----------------------------|------------------|---------|--------|
| NC | 245 | EOLL | BTZAD/WOBUN | DCT MELIN T420 POL B4 MARGO | | TWEEDIA | EGPH |
| 245 | 660 | EOLL | BTZAD/WOBUN | DCT MELIN UAR POL UB4 MARGO | | TWEEDIA | EGPH |

The Search Results area can also display the following legends which obscure the route segment display:

No route matches

No routes were found that match the specified search criteria.

Search criteria changed – initiate new search.

The search criteria have changed, invalidating the current route segment display.

Checking database ...

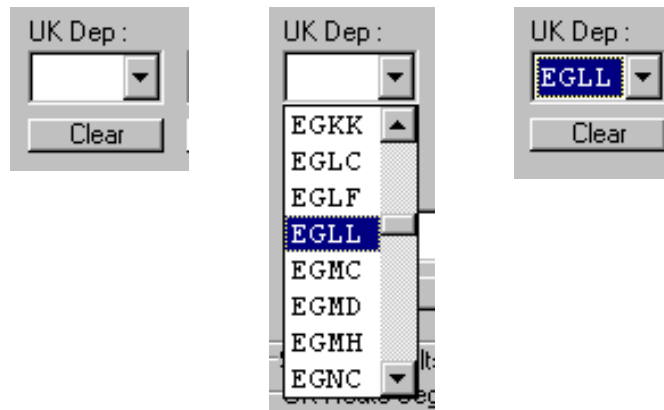
The database is being searched for route segments that match the specified search criteria.

Operations

Setting Search Criteria

UK Dep, UK Entry Point, UK Exit Point and UK Des

These four items are set by use of drop-down edit boxes which are initialised to contain available items when the program is started. To set a value, click on the down arrow (▼) and select the desired item:



N.B. UK Dep and UK Entry Point are mutually exclusive; as are UK Des and UK Exit Point.

Via

This item is set by entering the fixes and/or routes that are required for the search. If the “|” symbol (same key as “\”) is used to separate items, more general search criteria are applied. For example:

- If “**WELIN UA2 TNT**” is entered; the program will show routes that contain an exact copy of the entered string (assuming any other criteria also match).
- If “**WELIN | UA2 | TNT**” is entered; the program will show routes that contain the three items in any position provided they are in the same order (assuming any other criteria also match).
- If “**WELIN UA2 | TNT**” is entered; the program will show routes that contain “**WELIN UA2**” and “**TNT**” in any position, but in that order (assuming any other criteria also match).

General

Search criteria can be cleared by operating their individual **Clear** buttons, or operating the **Clear All** button.

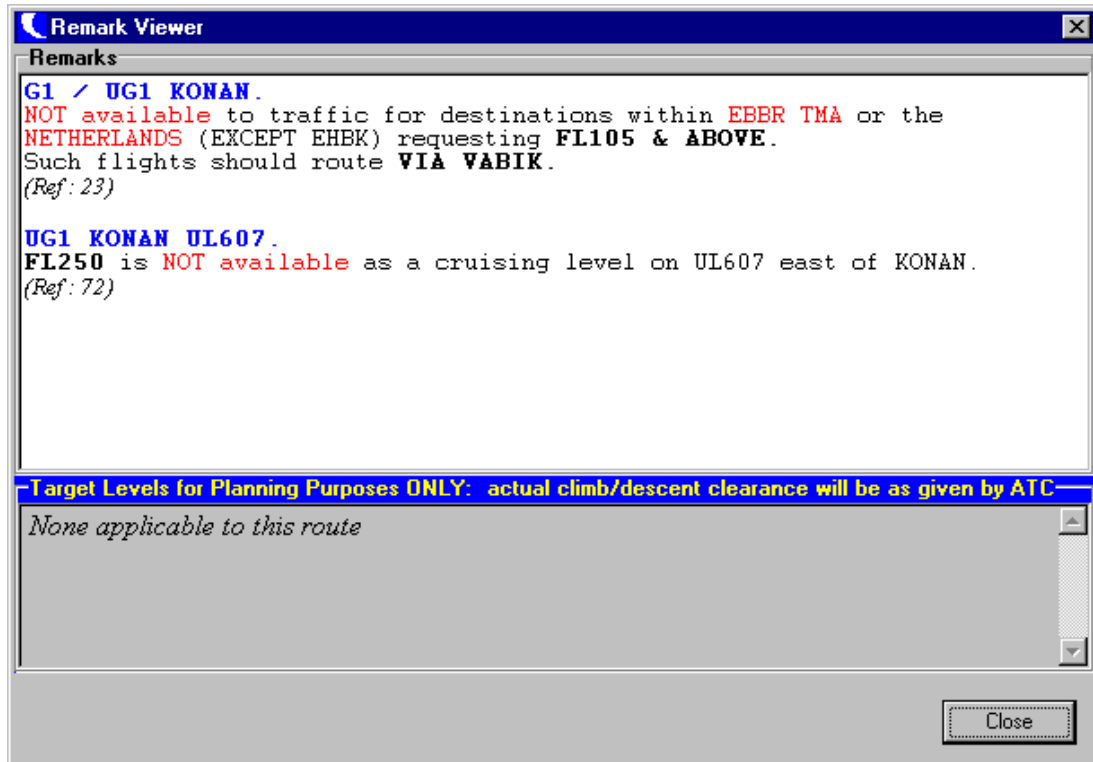
Searching The Database

When the search criteria have been set, the **Search** button should be operated to search the database. If database matches are found, the results will be displayed in the **UK Route Segment(s)** area. If no matches are found, the message “**No route matches**” will be displayed in the **UK Route Segment(s)** area.

Displaying Remarks

Many routes in the database have associated remarks. If a route has associated remarks a red "R" appears in the "R" column of the displayed route segments. Selecting such a route will cause the **Remarks** button to become enabled and flash between black and red.

When the **Remarks** button is operated, the Remark Viewer window will be displayed:



The Remark Viewer window can be closed by operating its **Close** button.

Copying Route Data

A formatted version of the selected route is displayed in the Route Display area:



Route Display

The route data can be copied to the operating system clipboard, for use by other applications, by operating the **Copy** button.

Printing Route Data

A printed copy of the selected route's details and associated remarks can be obtained by operating the **Print** button.

End Of Document