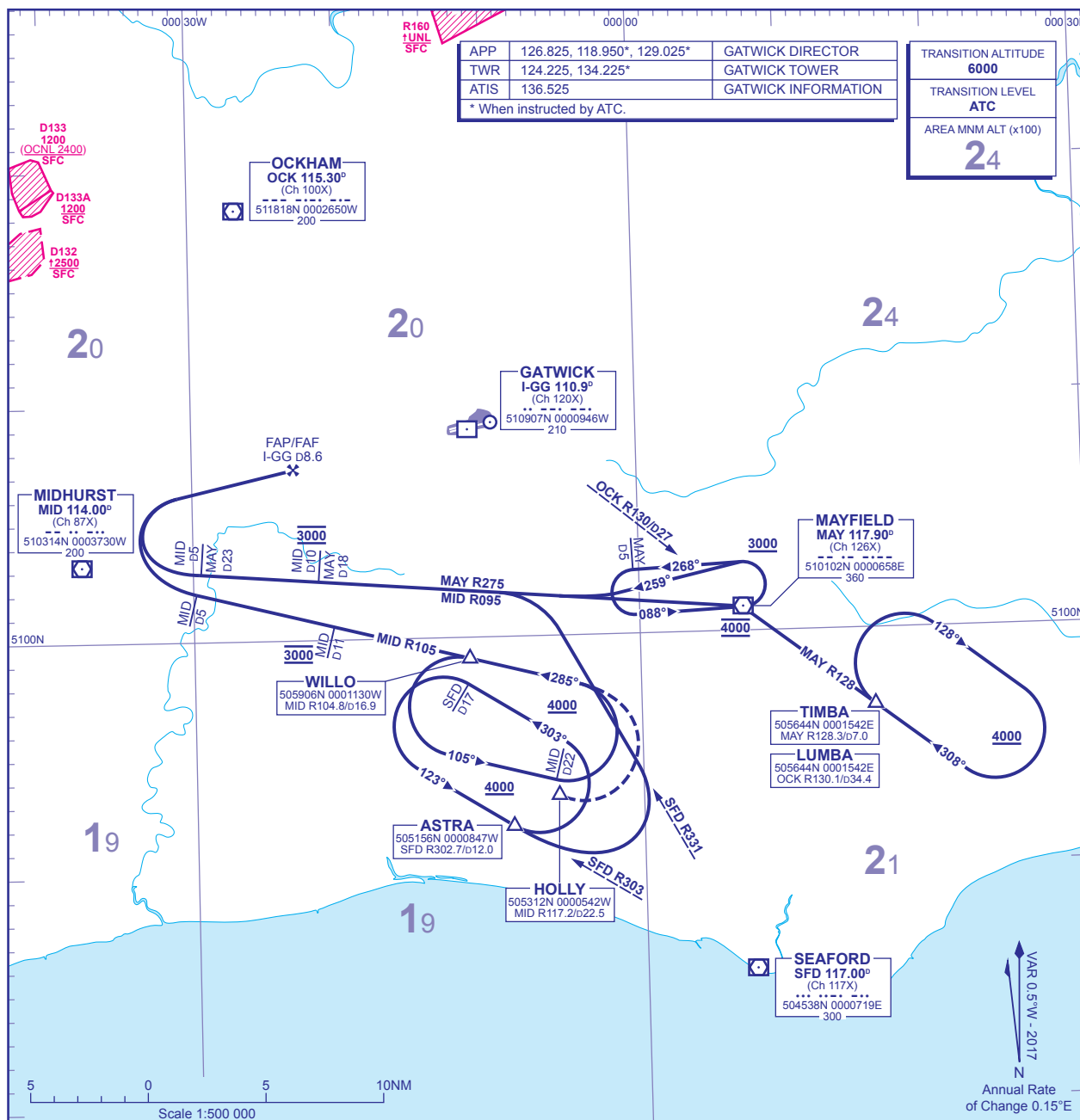


INITIAL APPROACH PROCEDURES  
ILS RWY 08R Without Radar ControlDISTANCES IN NAUTICAL MILES  
BEARINGS, TRACKS AND RADIALS ARE MAGNETIC  
ALTITUDES AND ELEVATIONS ARE IN FEETLONDON  
GATWICK

When traffic is not being sequenced by Surveillance Radar, aircraft will be cleared from the holding areas to carry out the approach procedure to ILS RWY 08R as outlined below:

TIMBA	When established inbound in the holding pattern (QDM 308°) commence descent to <b>4000</b> and proceed to <b>MAY VOR</b> . Leave <b>MAY VOR</b> on R275 continuing descent to <b>3000</b> . Cross <b>MAY</b> D18 at <b>3000</b> . At <b>MAY</b> D23 turn right to intercept the ILS localiser and continue ILS approach as detailed on Instrument Approach Chart.	ALT at which to leave; Descending to <b>4000</b>
LUMBA	When established inbound in the holding pattern (QDM 308°) commence descent to <b>4000</b> and proceed to <b>MAYFIELD (OCK D27)</b> . Turn left to intercept <b>MID VOR</b> R095 continuing descent to <b>3000</b> . Cross <b>MID</b> D10 at <b>3000</b> . At <b>MID</b> D5 turn right to intercept the ILS localiser and continue ILS approach as detailed on Instrument Approach Chart.	ALT at which to leave; Descending to <b>4000</b>
WILLO	Descend in the holding pattern to <b>4000</b> . Leave <b>WILLO</b> on <b>MID VOR</b> R105 then descend to <b>3000</b> . Cross <b>MID</b> D11 at <b>3000</b> . At <b>MID</b> D5 turn right to intercept the ILS localiser and continue ILS approach as detailed on Instrument Approach Chart.	ALT at which to leave; <b>4000</b>
ASTRA	Descend in the holding pattern to <b>4000</b> . Leave <b>ASTRA</b> with a left turn to intercept <b>SFD VOR</b> R331 then descend to <b>3000</b> . Turn left to intercept <b>MAY VOR</b> R275. Cross <b>MAY</b> D18 at <b>3000</b> . At <b>MAY</b> D23 turn right to intercept the ILS localiser and continue ILS approach as detailed on Instrument Approach Chart.	ALT at which to leave; <b>4000</b>
MAYFIELD VOR/DME	Overhead <b>MAY VOR/DME</b> . Continue outbound turn onto track 259° to intercept and follow <b>MAY</b> R275 at <b>3000</b> . At <b>MAY</b> D23 turn right to intercept the ILS localiser and continue ILS approach as detailed on Instrument Approach Chart.	ALT at which to leave; <b>3000</b>

## GENERAL INFORMATION

- 1 Missed Approach Procedures are detailed on the Instrument Approach Charts.
- 2 These initial approach procedures are designed for manoeuvring speeds up to 240KT TAS and assume aircraft can maintain a descent of approximately 300 per nautical mile.
- 3 Change to altimeter setting for landing when cleared to **2000** or below.
- 4 WILLO HOLD: HOLLY is routeing/entry fix for STARs via MID and GWC. Holding pattern is DME limited at MID D22.

CHANGE (9/16): MAG VAR. ANNUAL RATE OF CHANGE. ASTRA SFD, TIMBA MAY FIX. MAG TRACKS.

AERO INFO DATE 7 JUN 16