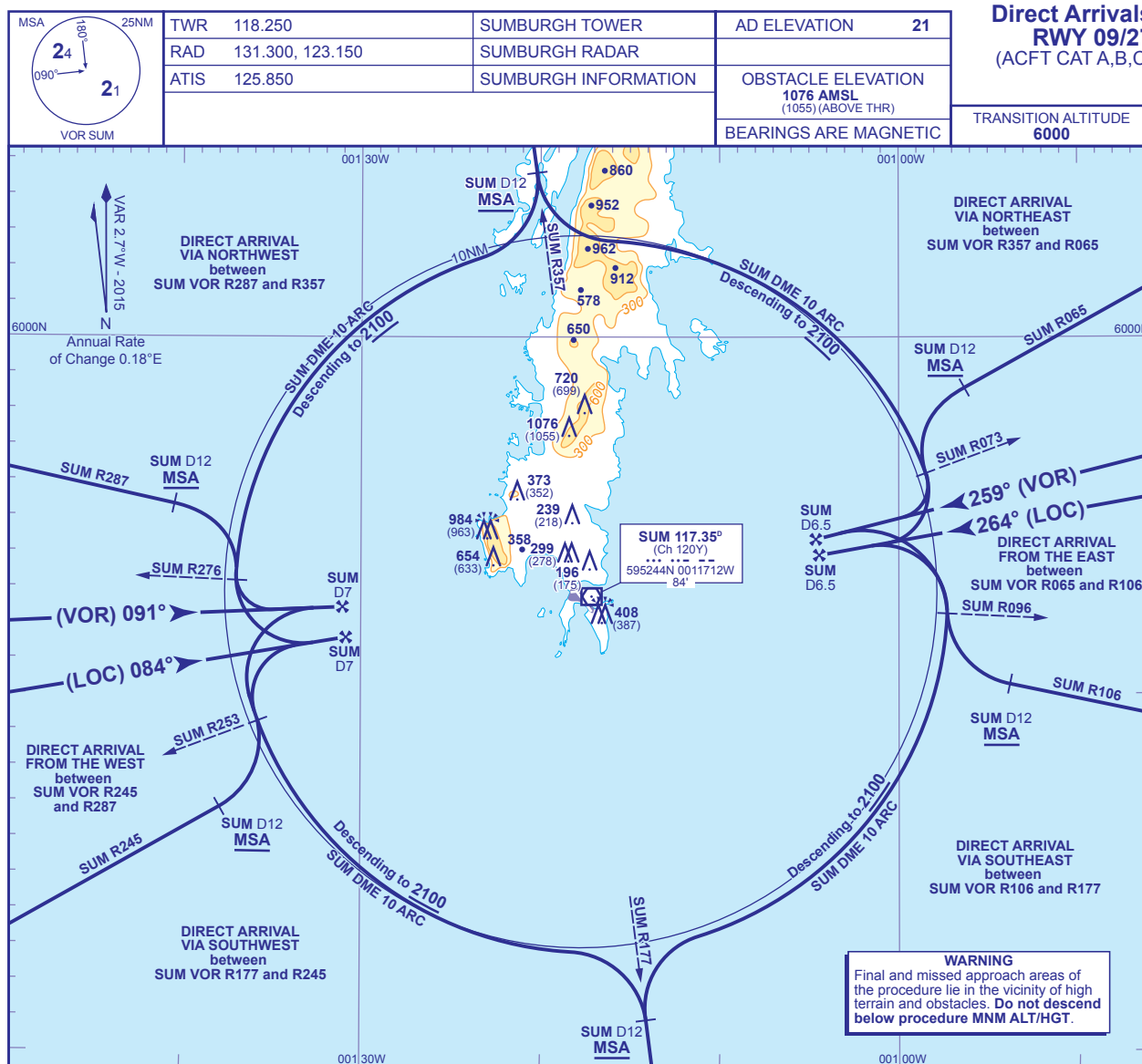


INSTRUMENT APPROACH CHART - ICAO

SUMBURGH
Direct Arrivals
RWY 09/27
(ACFT CAT A,B,C)



DIRECT ARRIVALS RWY 09

From the Northwest (SUM VOR R287 to R357)

Track towards VOR SUM on any radial between SUM VOR R287 and R357 **not below MSA**. At SUM DME 12 turn right to establish on the SUM DME 10 arc anti-clockwise. Once established on the arc descend to **not below 2100**. At SUM R276 turn left to establish on the LOC or FAT. Once established continue as for main procedure.

From the Southwest (SUM VOR R177 to R245)

Track towards VOR SUM on any radial between SUM VOR R177 and R245 **not below MSA**. At SUM DME 12 turn left to establish on the SUM DME 10 arc clockwise. Once established on the arc descend to **not below 2100**. At SUM R253 turn right to establish on the LOC or FAT. Once established continue as for main procedure.

From the West (SUM VOR R245 to R287)

Establish on the extended LOC or FAT **not below MSA**. Once established descend to **2100** and continue as for main procedure.

DIRECT ARRIVALS RWY 27

From the Northeast (SUM VOR R357 to R065)

Track towards VOR SUM on any radial between SUM VOR R357 and R065 **not below MSA**. At SUM DME 12 turn left to establish on the SUM DME 10 arc clockwise. Once established on the arc descend to **not below 2100**. At SUM R073 turn right to establish on the LOC or FAT. Once established continue as for main procedure.

From the Southeast (SUM VOR R106 to R177)

Track towards VOR SUM on any radial between SUM VOR R106 and R177 **not below MSA**. At SUM DME 12 turn right to establish on the SUM DME 10 arc anti-clockwise. Once established on the arc descend to **not below 2100**. At SUM R096 turn left to establish on the LOC or FAT. Once established continue as for main procedure.

From the East (SUM VOR R065 to R106)

Establish on the extended LOC or EAT **not below MSA**. Once established descend to **2100** and continue as for main procedure.

CHANGE (2/16): SUM VOR RECALIBRATED. SUM VOR LEAD RADIALS. SUM VOR FAT.

AERO INFO DATE 5 NOV 15.