
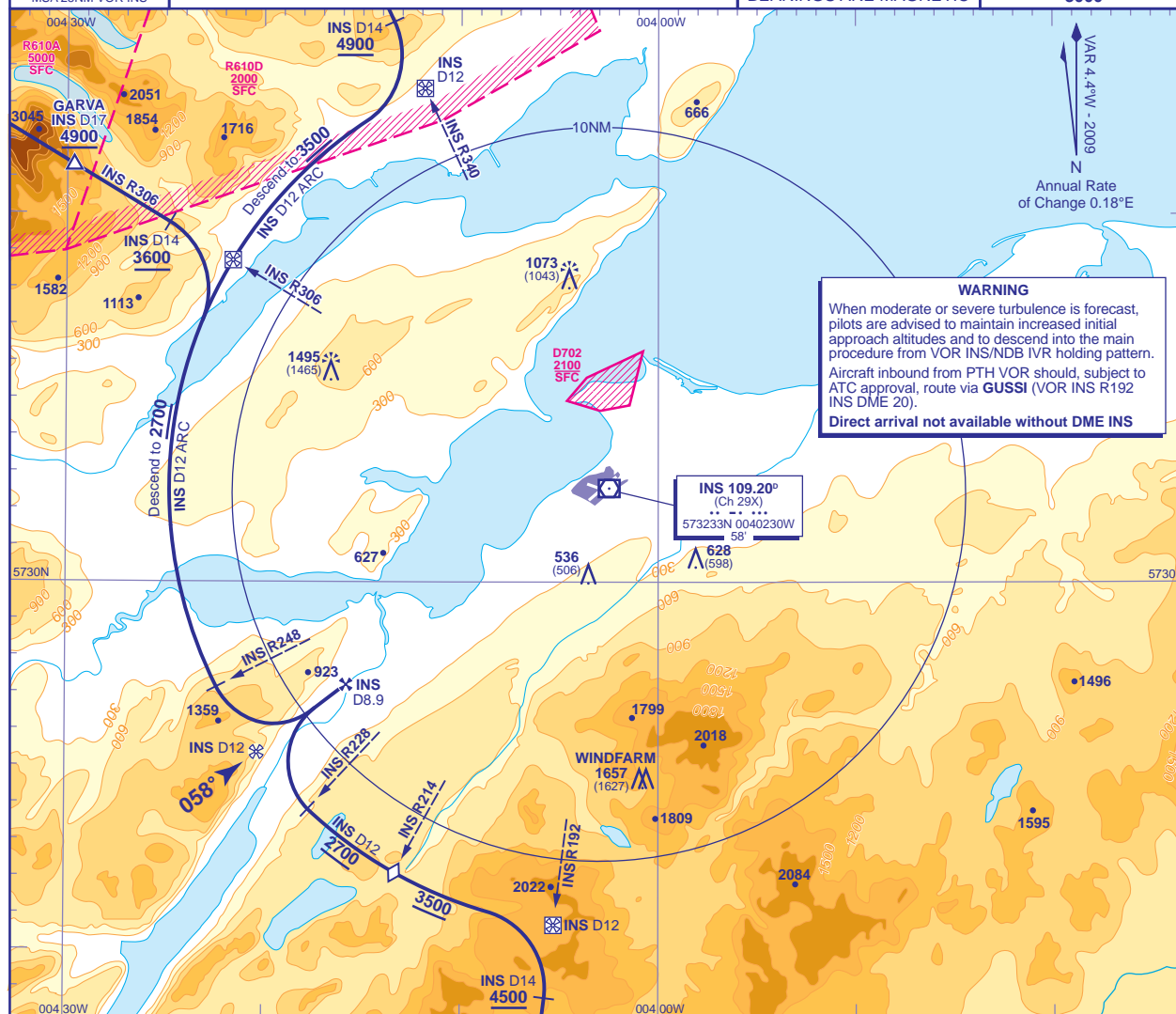


INSTRUMENT APPROACH CHART - ICAO

INVERNESS
Direct Arrivals
VOR/DME
RWY 05
(ACFT CAT A,B)

 <p>MSA 25NM VOR INS</p>	APP 122.600	INVERNESS APPROACH	AD ELEVATION 31	<p>Direct Arrival VOR/DM RWY 01 (ACFT CAT A, B)</p> <p>TRANSITION ALTITUDE 3000</p>
	TWR 118.400, 122.600	INVERNESS TOWER	THR ELEVATION 30	
	RAD 122.600	INVERNESS RADAR	OBSTACLE ELEVATION 1495 AMSL (1465) (ABOVE THR)	
	ATIS 109.200	INVERNESS INFORMATION	BEARINGS ARE MAGNETIC	



Arriving on N560 Northbound

Arrival on the south on VOR INS R192 (QDM 012°) **not below 5800**. Request ATC approval for DME arc arrival when within INS DME 40. After passing INS DME 25, with ATC approval, descend **not below 5000**, and after passing **GUSSI** (INS DME 20) descend **not below 4500**. From INS DME 14 turn left to establish on INS DME 12 arc clockwise. When established, descend along the arc **not below 3500**. After crossing step down VOR INS R214, continue descent to **2700**(2670), then from lead VOR INS R228 turn right onto extended FAT. From FAF INS DME 8.9 at **2700**(2670), continue with VOR/DME final approach.

Arriving on N560 Southbound

Arrival on N560 **not below 5000**. Request ATC approval for DME arc arrival when near **BONBY**. When approved, after passing **BONBY** (INS DME 23) descend **not below 4900**. Establish on INS R340 (QDM 160°) from INS DME 14 turn right to establish on INS DME 12 arc anticlockwise. When established, descend along the arc **not below 3500**. After crossing INS R306, continue descent to **2700**(2670), then from lead VOR INS R248 turn left to establish on extended FAT. From FAF INS DME 8.9 at **2700**(2670), continue with VOR/DME final approach.

Arriving on Y906 Southeastbound

Arrival on VOR INS R306 (QDM 126°) **not below 5200**. Request ATC approval for DME arc arrival when within INS DME 40. After passing INS DME 25, with ATC approval, descend **not below 4900**, and after passing **GARVA** (INS DME 17) descend **not below 3600**. From INS DME 14 turn right to establish on INS DME 12 arc anticlockwise. When established continue descent to **2700(2670)**, then from lead VOR INS R248 turn left to establish on extended FAT. From FAF INS DME 8.9 at **2700(2670)**, continue with VOR/DME final approach.

CHANGE (12/15): R610A/D. OBSTACLES. SPOT HEIGHTS.

AERO INFO DATE 02 SEP 15