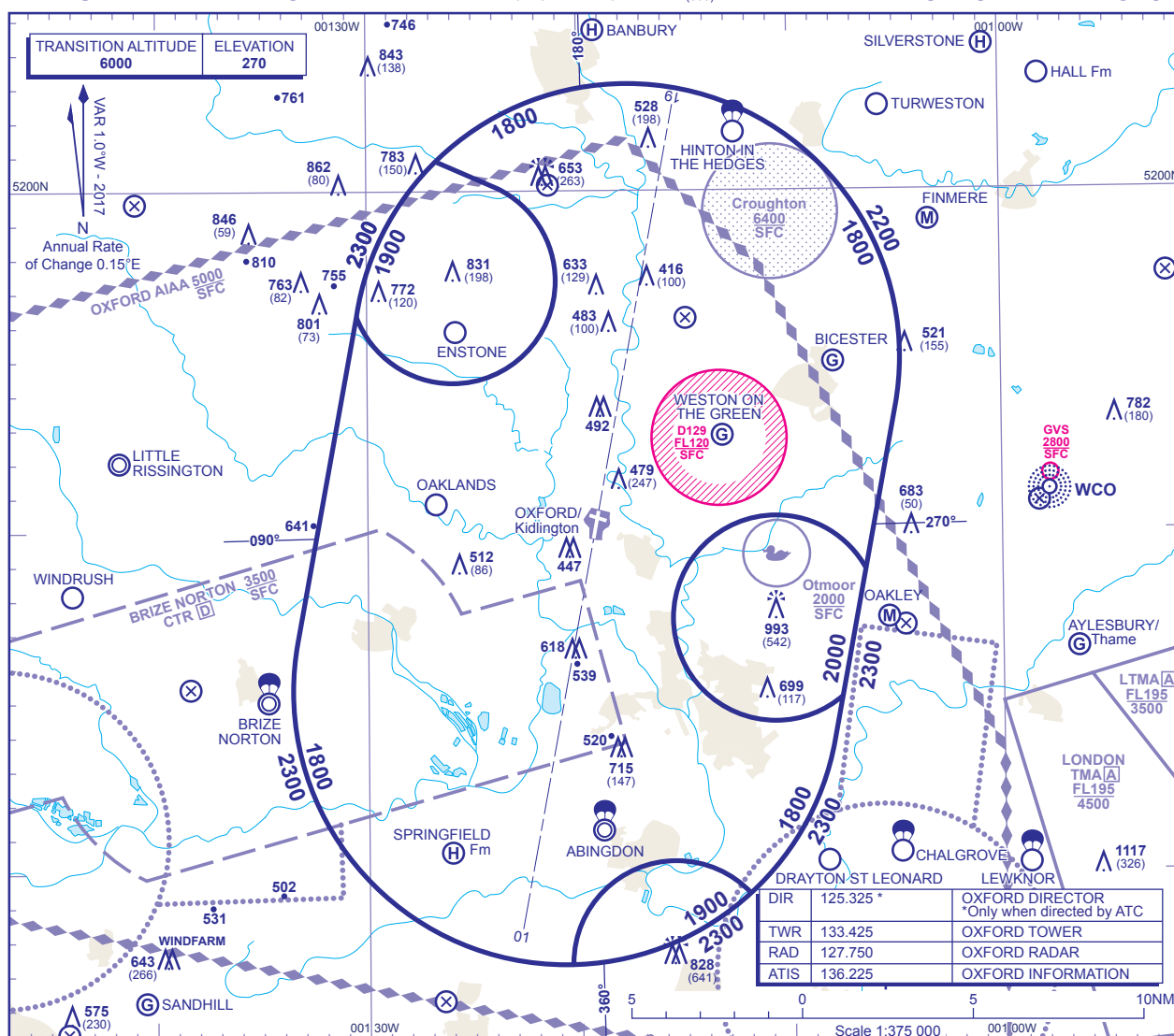


**ATC SURVEILLANCE MINIMUM
ALTITUDE CHART - ICAO**BEARINGS, TRACKS AND RADIALS ARE MAGNETIC
ELEVATIONS IN FEET AMSL **1358**
HEIGHTS IN FEET AGL (800)**OXFORD/KIDLINGTON****MINIMUM INITIAL ALTITUDE**

Within the ATC Surveillance Minimum Altitude area the minimum initial altitude to be allocated by the approach surveillance controller is:

- a) **1800** in the sector defined by the lateral limits: 520053N 0012642W thence clockwise by an arc of a circle radius 8NM centred on 515508N 0011742W to 515338N 0010500W - 514850N 0010630W thence anticlockwise by an arc of a circle radius 3NM centred on 514726N 0011045W to 514509N 0010738W - 514349N 0010803W thence clockwise by an arc of a circle radius 8NM centred on 514519N 0012041W to 513922N 0011205W thence anticlockwise by an arc of a circle radius 3NM centred on 513720N 0011537W to 513720N 0012025W thence clockwise by an arc of a circle radius 8NM centred on 514519N 0012041W to 514647N 0013321W - 515622N 0013029W thence anticlockwise by an arc of a circle radius 3NM centred on 515723N 0012555W to 520004N 0012344W - 520053N 0012642W.
- b) **2000** in the sector defined by the lateral limits: 514850N 0010630W - 514509N 0010738W thence clockwise by an arc of a circle radius 3NM centred on 514726N 0011045W to 514850N 0010630W.
- c) **1900** in the sector defined by the lateral limits: 513720N 0012025W thence clockwise by an arc of a circle radius 3NM centred on 513720N 0011537W to 513922N 0011205W thence clockwise by an arc of a circle radius 8NM centred on 514519N 0012041W to 513720N 0012025W.
- d) **1900** in the sector defined by the lateral limits: 520053N 0012642W - 520004N 0012344W thence clockwise by an arc of a circle radius 3NM centred on 515723N 0012555W to 515622N 0013029W - 515636N 0013024W thence clockwise by an arc of a circle radius 8NM centred on 514508N 0011742W to 520053N 0012642W.

OUTSIDE THE DESIGNATED ATC SURVEILLANCE MINIMUM ALTITUDE AREAThe minimum altitude to be allocated by the approach surveillance controller will be either the Minimum Sector Altitude, or **1000** above any fixed obstacles:

- a) within 5NM of the aircraft*, and
b) within the sector 15NM ahead of and within 20° either side of the aircraft's track*.

LOSS OF COMMUNICATION PROCEDURES**Initial Approach** Continue visually or by means of an appropriate approved final approach aid. If not possible proceed at **2200**, or last assigned level if higher, to **NDB(L)DME OX†**.**Intermediate and Final Approach** Continue visually or by means of an appropriate final approach aid. If not possible follow the Missed Approach Procedure to **NDB(L)DME OX†**.

† In all cases where the aircraft returns to the holding facility the procedure to be adopted is the Radio Failure Procedure detailed at ENR 1.1.3.

GENERAL INFORMATION

- Levels shown are based on QNH.
- Only significant obstacles and dominant spot heights are shown.
- The minimum levels shown within the ATC Surveillance Minimum Altitude Area are in conformance with the Standard European Rules of the Air - SERA.5015.
- Minimum Sector Altitudes are based on obstacles and spot heights within 25NM of OX NDB.
- Controlled airspace with a base in excess of **5000** or FL55, as appropriate, is not shown.
- This chart should only be used for the cross-checking of assigned altitudes whilst in receipt of an ATC Surveillance service.**

CHANGE (2/17): MAG VAR. P106 REMOVED. OBSTACLES.

AERO INFO DATE 08 NOV 16