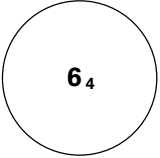
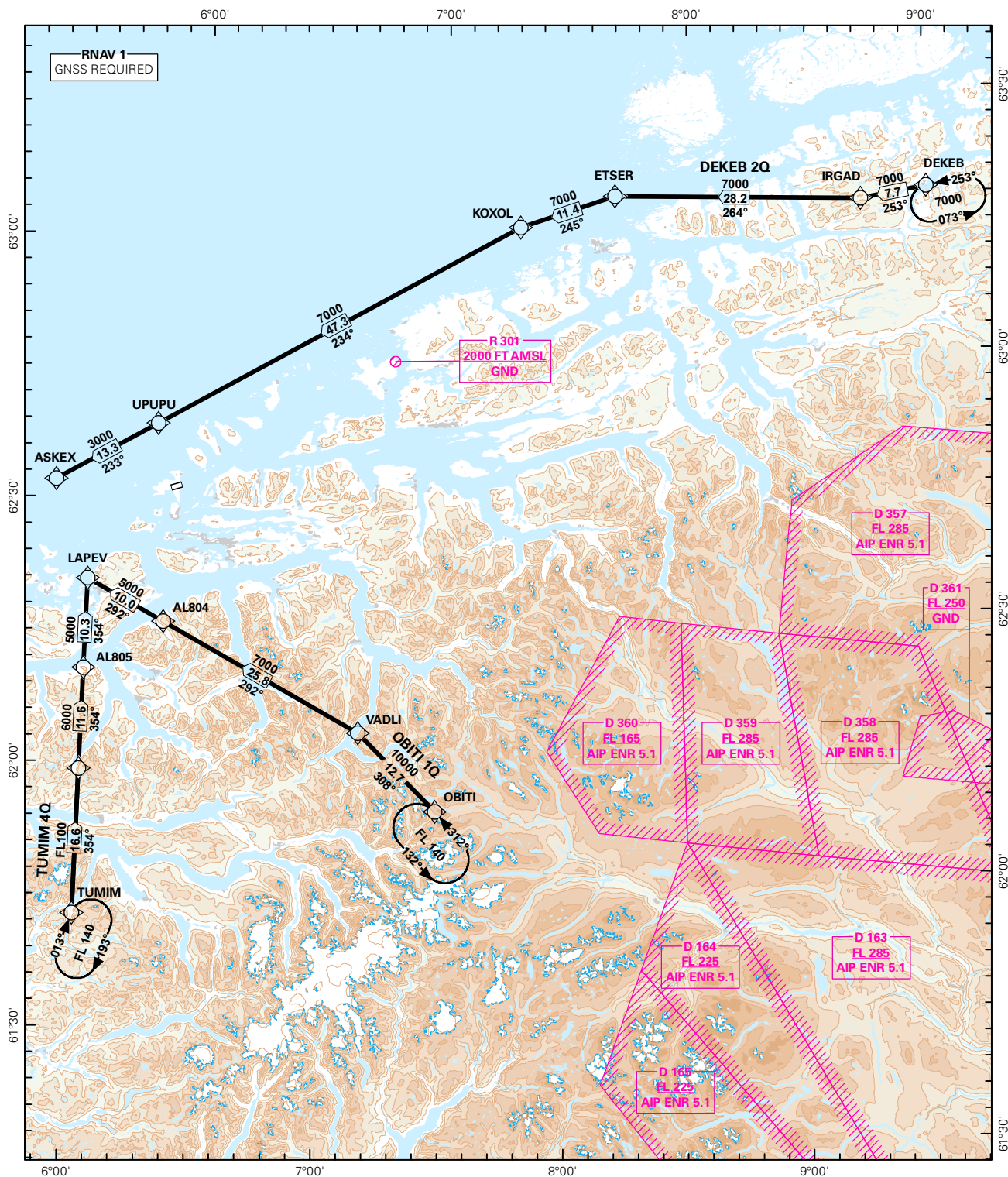


## STANDARD ARRIVAL CHART INSTRUMENT (RNAV 1 STAR BASED ON GNSS)

 <b>64</b> MSA 25 NM ARP	ATIS: 128.650	ALT AND ELEV ARE IN FT DIST IN NM			<b>ÅLESUND/VIGRA</b>  <b>RWY 06</b>  NORWAY  DEKEB 2Q, OBITI 1Q, TUMIM 4Q
	APP: 129.325				
	TWR: 118.100				
		1:1 250 000	VAR: 0.5 ° E (2015)	TA 7000	



STAR DESCRIPTION OVERLEAF  
DESCRIPTION OF WAYPOINTS, REF ENR 4.4

ATS AIRSPACE CLASSIFICATIONS: REF ENR 1.4  
LEGEND: REF GEN 2.3

CHANGES: RWY ID, EDITORIALS.

**STANDARD ARRIVAL ROUTES - INSTRUMENT  
(RNAV 1 STAR BASED ON GNSS)**
**Ålesund/Vigra  
RWY 06**

**GENERAL:** Surveillance service shall be available.

**LOSS OF RNAV 1 CAPABILITY:** Request vectoring.

**VECTORING:** Vectoring may be used for sequencing.

**RADIO COMMUNICATION FAILURE:** Squawk A7600. Proceed on STAR and make APCH to RWY 06.

DESIGNATOR	ROUTE	RESTRICTIONS	DESCEND	CLEARANCE LIMIT
<b>DEKEB 2Q</b> (DEKEB TWO QUEBEC ARRIVAL)	From DEKEB, to IRGAD, to ETSER, to KOXOL, to UPUPU, to ASKEX.	Cross DEKEB at or above 7000 FT. Cross UPUPU at or above 7000 FT. Cross ASKEX at or above 3000 FT.	As cleared by ATC.	ASKEX
<b>OBITI 1Q</b> (OBITI ONE QUEBEC ARRIVAL)	From OBITI, to VADLI, to AL804, to LAPEV.	Cross OBITI at or above FL 140. Cross VADLI at or above 10 000 FT. Cross AL804 at or above 7000 FT. Cross LAPEV at or above 5000 FT.	As cleared by ATC.	LAPEV
<b>TUMIM 4Q</b> (TUMIM FOUR QUEBEC ARRIVAL)	From TUMIM, to AL806, to AL805, to LAPEV.	Cross TUMIM at or above FL 140. Cross AL806 at or above FL 100. Cross AL805 at or above 6000 FT. Cross LAPEV at or above 5000 FT.	As cleared by ATC.	LAPEV