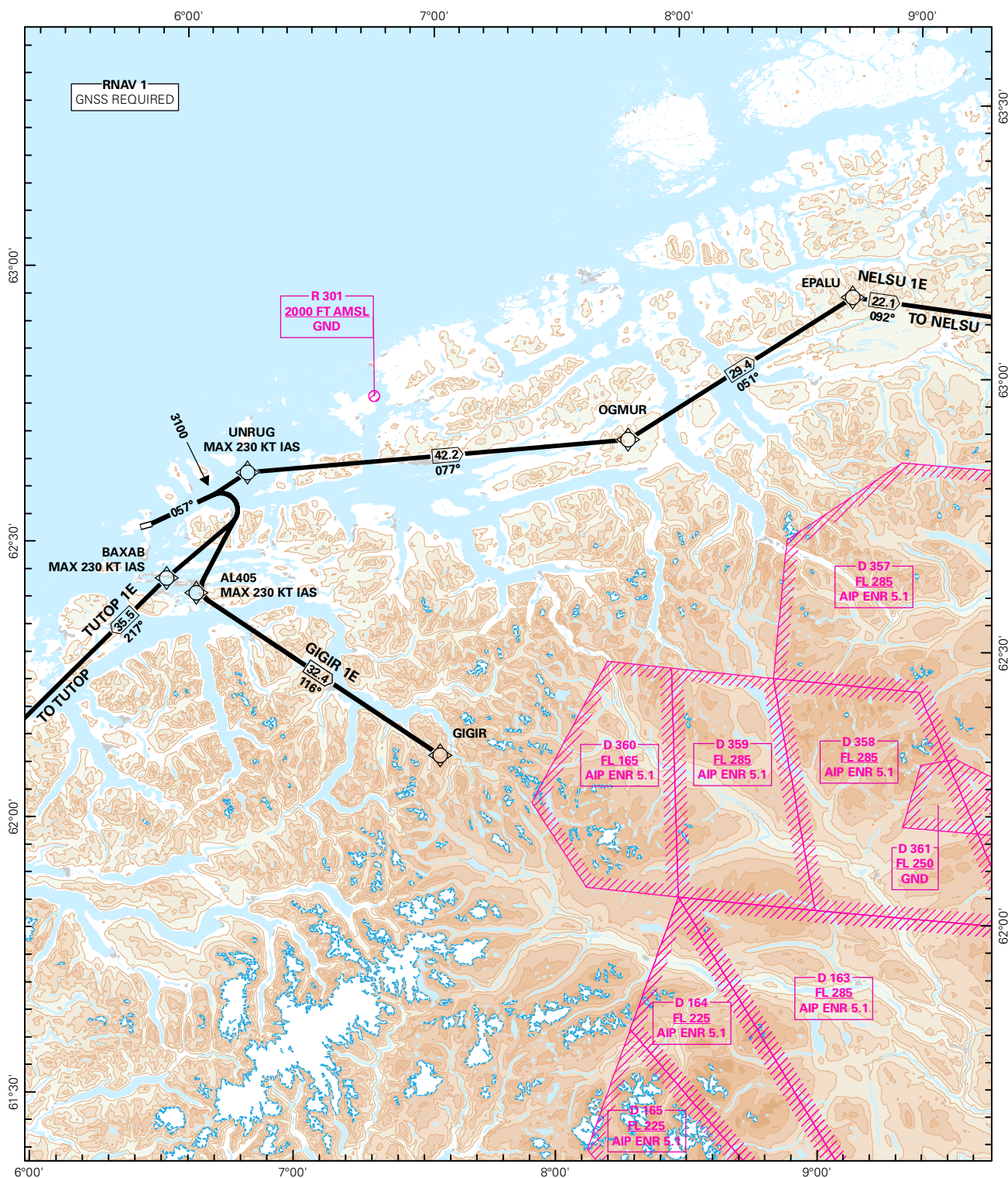
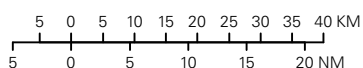


STANDARD DEPARTURE CHART INSTRUMENT (RNAV 1 SID BASED ON GNSS)

<div style="border: 1px solid black; border-radius: 50%; width: 60px; height: 60px; display: flex; align-items: center; justify-content: center; margin: 0 auto;">64</div> <div style="text-align: center; margin-top: 5px;">MSA 25 NM ARP</div>	ATIS: 128.650	ALT AND ELEV ARE IN FT DIST IN NM			ÅLESUND/VIGRA RWY 06 NORWAY GIGIR 1E, NELSU 1E, TUTOP 1E
	APP: 129.325				
	TWR: 118.100				
		1:1 200 000	VAR: 0.5 ° E (2015)	TA 7000	



CHANGES: RWY ID.

SID DESCRIPTION OVERLEAF
DESCRIPTION OF WAYPOINTS, REF ENR 4.4ATS AIRSPACE CLASSIFICATIONS: REF ENR 1.4
LEGEND: REF GEN 2.3

**STANDARD DEPARTURE ROUTES - INSTRUMENT
(RNAV 1 SID BASED ON GNSS)**
**ÅLESUND/Vigra
RWY 06**
GENERAL: Surveillance service shall be available.

RADIO COMMUNICATION FAILURE: Squawk A7600. Maintain last assigned LVL for 2 minutes, then climb to CPL cruising LVL. Aircraft under vectoring shall, after set transponder to A 7600, proceed in the most direct manner possible to rejoin the CPL route no later than the next significant point, climbing to the CPL cruising LVL taking into consideration the applicable MNM flight ALT.

CLOSE-IN OBSTACLES:
**VECTORIZING/
DIRECT ROUTING:** When being vectored or cleared for DCT routing, the climb gradient(s) stated in SID "RESTRICTIONS"-table apply.

ATC CLEARANCE: Departing IFR flights shall obtain ATC clearance from "VIGRA TWR".

NON RNAV 1 ACFT: At first contact with "VIGRA TWR" state "UNABLE RNAV 1 DUE (reason)". OMNI-DIRECTIONAL DEPARTURE available (see ENAL AD 2-24).

DESIGNATOR	ROUTE	RESTRICTIONS	CLIMB TO	CONTACT
GIGIR 1E (GIGIR ONE ECHO DEPARTURE)	Climb on course 057°, when passing 3100 FT, turn right DCT AL405, turn left to GIGIR.	MNM climb gradient 6.6% (401 FT/NM) to 3500 FT. If unable to comply, inform ATC. MAX 230 KT IAS at AL405.	6000 FT As cleared by ATC. If no further climb received 27 NM prior to GIGIR, climb to CPL cruising LVL.	As instructed by Vigra TWR
NELSU 1E (NELSU ONE ECHO DEPARTURE)	Climb on course 057°, when passing 3100 FT, proceed DCT UNRUG, to OGMUR, to EPALU, to NELSU.	MNM climb gradient 6.6% (401 FT/NM) to 3500 FT. If unable to comply, inform ATC. MAX 230 KT IAS at UNRUG.	6000 FT As cleared by ATC. If no further climb received 33 NM prior to OGMUR, climb to CPL cruising LVL.	As instructed by Vigra TWR
TUTOP 1E (TUTOP ONE ECHO DEPARTURE)	Climb on course 057°, when passing 3100 FT, turn right DCT BAXAB, to TUTOP.	MNM climb gradient 6.6% (401 FT/NM) to 3500 FT. If unable to comply, inform ATC. MAX 230 KT IAS at BAXAB.	6000 FT As cleared by ATC. If no further climb received 28 NM prior to TUTOP, climb to CPL cruising LVL.	As instructed by Vigra TWR