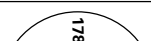
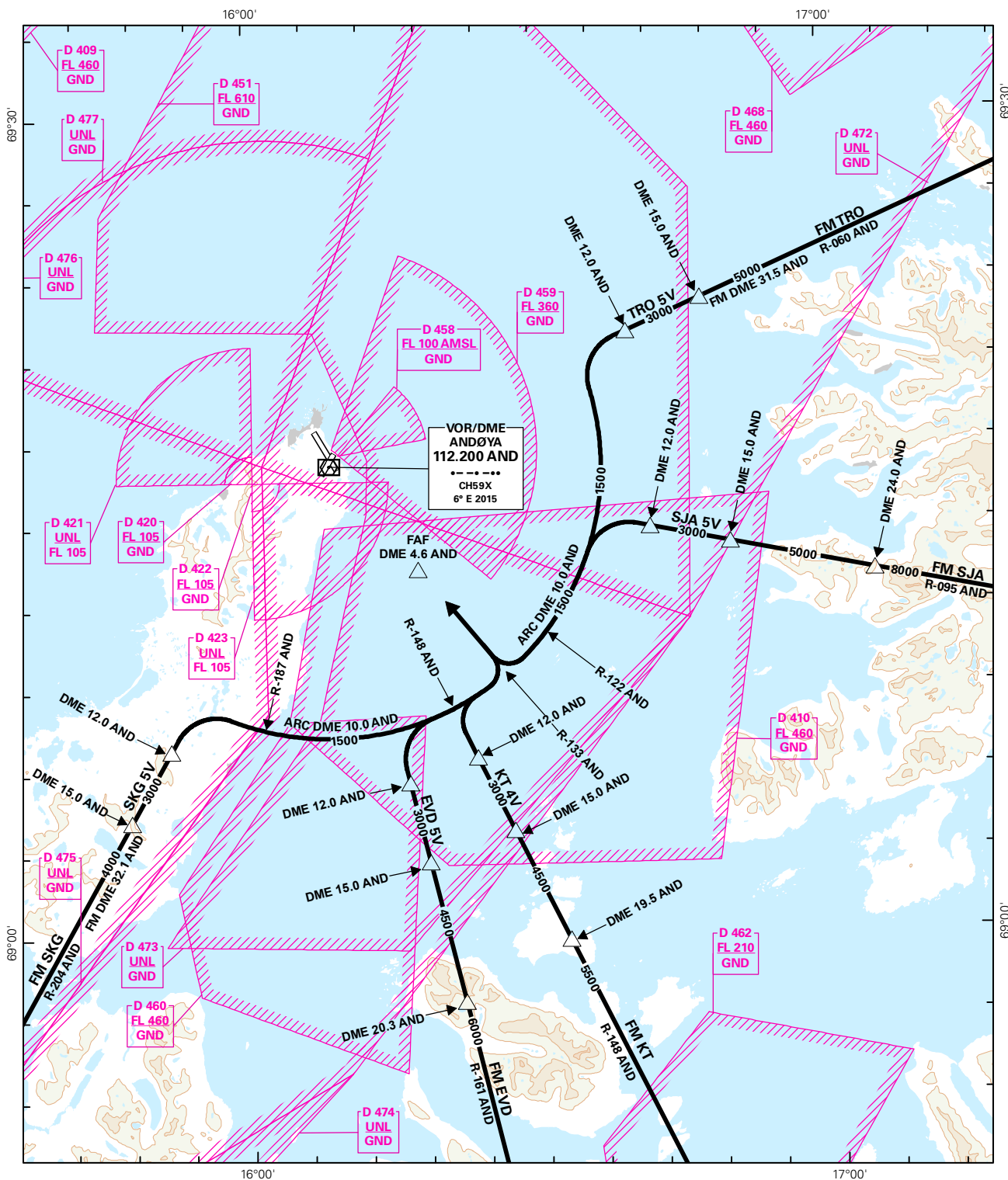
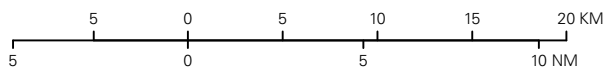


## STANDARD ARRIVAL CHART INSTRUMENT - ICAO

 MSA 25 NM AND	ATIS: 136.125		ALT AND ELEV ARE IN FT DIST IN NM			ANDØYA/ANDENES  RWY 32  NORWAY	
	TWR: 118.200	118.700					
	122.100						
	VDF: 118.700						
			1:400 000	VAR: 6.3 ° E (2015)	TA 7000	EVD 5V, KT 4V, SJA 5V, SKG 5V, TRO 5V	



CHANGES: MAGNETIC VARIATION, NEW MSA.

STAR DESCRIPTION OVERLEAF  
DESCRIPTION OF WAYPOINTS, REF ENR 4.4ATS AIRSPACE CLASSIFICATIONS: REF ENR 1.4  
LEGEND: REF GEN 2.3

**STANDARD ARRIVAL ROUTES - INSTRUMENT  
(STAR)****ANDØYA/Andenes  
RWY 32****SPEED RESTRICTIONS:** MAX IAS 250 KTS BLW FL 100.**RADIO COMMUNICATION FAILURE:** Squawk A7600. Proceed on STAR and make APCH to RWY 32.**NOTE:** Altitudes shown on this chart are minimum obstacle clearance altitude only.  
PIC must strictly follow instructions from ATC concerning altitudes and flight levels.

DESIGNATOR	ROUTE	RESTRICTIONS	DESCEND	CLEARANCE LIMIT
<b>EVENES FIVE VICTOR ARRIVAL (EVD 5V)</b>	From EVD proceed on R-341 EVD/R-161 AND. When passing DME 12 AND turn right to intercept and proceed on ARC DME 10 AND. When passing R-148 AND turn left to intercept and follow R-133 AND to FAF.		As cleared by ATC.	FAF
<b>KATNES FOUR VICTOR ARRIVAL (KT 4V)</b>	From KT proceed on QDR 329° KT/R-148 AND. When passing DME 12 AND turn right to intercept and follow R-133 AND to FAF.		As cleared by ATC.	FAF
<b>SENJA FIVE VICTOR ARRIVAL (SJA 5V)</b>	From SJA proceed on QDR 276° SJA/R-095 AND. When passing DME 12 AND turn left to intercept and proceed on ARC DME 10 AND. When passing R-122 AND turn right to intercept and follow R-133 AND to FAF.		As cleared by ATC.	FAF
<b>SKAGEN FIVE VICTOR ARRIVAL (SKG 5V)</b>	From SKG proceed on R-023 SKG/R-204 AND. When passing DME 12 AND turn right to intercept and proceed on ARC DME 10 AND. When passing R-148 AND turn left to intercept and follow R-133 AND to FAF.	MNM altitude 6000 FT until passing DME 32.1 AND.	As cleared by ATC.	FAF
<b>TROMSØ FIVE VICTOR ARRIVAL (TRO 5V)</b>	From TRO proceed on R-242 TRO/R-060 AND. When passing DME 12 AND turn left to intercept and proceed on ARC DME 10 AND. When passing R-122 AND turn right to intercept and follow R-133 AND to FAF.	MNM altitude 8000 FT until passing DME 31.5 AND.	As cleared by ATC.	FAF