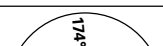
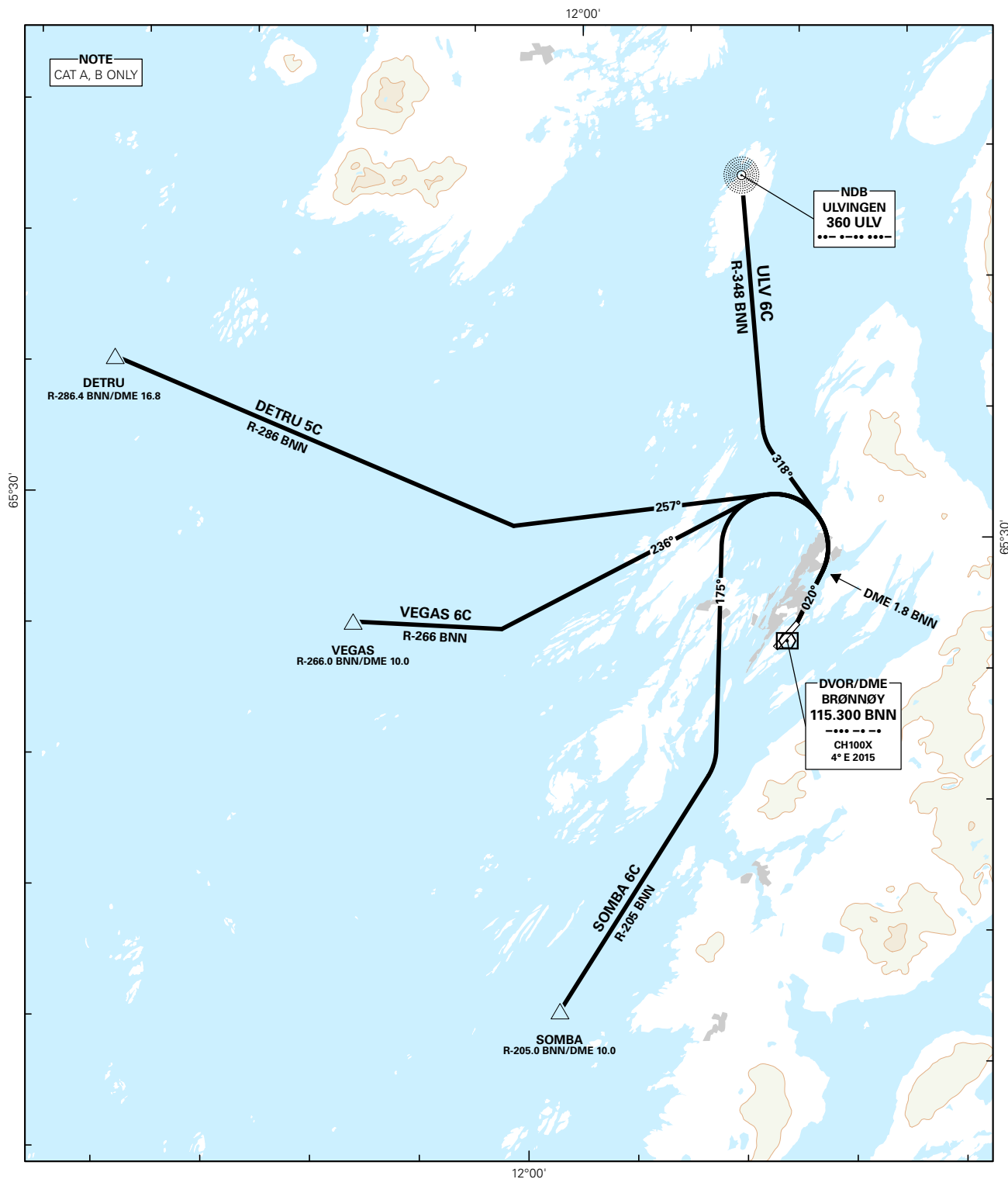


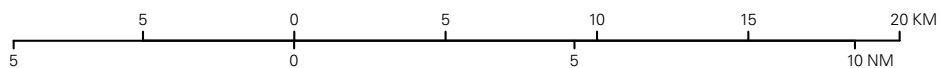
STANDARD DEPARTURE CHART INSTRUMENT - ICAO

 MSA 25 NM BNN	ATIS: 135.900	ALT AND ELEV ARE IN FT DIST IN NM			BRØNNØYSUND/BRØNNØY RWY 04 NORWAY DETRU 5C, SOMBA 6C, ULV 6C, VEGAS 6C
	APP: 127.900				
	AFIS: 119.600				
	VDF: 119.600	1:250 000 VAR: 3.6 ° E (2015) TA 7000			



SID DESCRIPTION OVERLEAF
DESCRIPTION OF WAYPOINTS, REF ENR 4.4

ATS AIRSPACE CLASSIFICATIONS: REF ENR 1.4
LEGEND: REF GEN 2.3



CHANGES: DETRU 5C, SOMBA 6C, ULV 6C, VEGAS 6C.

STANDARD DEPARTURE ROUTES -INSTRUMENT

BRØNNØYSUND
RWY 04**VECTORIZING:**

Vectoring involving deviation from SID may be used by NORWAY CONTROL to expedite outbound traffic.

**RADIO
COMMUNICATION
FAILURE:**

Squawk 7600.

In case of RCF after take-off, ACFT shall maintain last cleared and acknowledged level until passing DME 15.0 or R-015 BNN for ULV departures/R-147 BNN for SOMBA departures (whichever occurs first). Then climb to the cruising level stated in the CPL and proceed the most direct route to the cleared ATS route. ACFT under vectoring shall, after set transponder to 7600, continue on heading last cleared and acknowledged for two (2) minutes, then proceed the most direct route to join the cleared ATS-route.

DESIGNATOR	ROUTE	RESTRICTIONS	CLIMB TO	CONTACT
DETRU 5C (DETRU FIVE CHARLIE DEPARTURE)	Climb on track 020°. At DME 1.8 BNN turn left on track 257°. Intercept R-286 BNN. Continue climb on R-286 BNN to DETRU.	A MNM climb gradient of 7.0% (425 FT/NM) is required until 2500 FT. If unable to comply, inform ATC. Max 150 KT IAS in turns. No track adjustment before departure end of runway.	4000 FT	As instructed by BRØNNØY INFORMATION
SOMBA 6C (SOMBA SIX CHARLIE DEPARTURE)	Climb on track 020°. At DME 1.8 BNN turn left on track 175°. Intercept R-205 BNN. Continue climb on R-205 BNN to SOMBA.	A MNM climb gradient of 7.0% (425 FT/NM) is required until 2500 FT. If unable to comply, inform ATC. Max 150 KT IAS in turns. No track adjustment before departure end of runway.	4000 FT	As instructed by BRØNNØY INFORMATION
ULV 6C (ULVINGEN SIX CHARLIE DEPARTURE)	Climb on track 020°. At DME 1.8 BNN turn left on track 318°. Intercept R-348 BNN. Continue climb on R-348 BNN to ULV.	A MNM climb gradient of 7.0% (425 FT/NM) is required until 2500 FT. If unable to comply, inform ATC. Max 150 KT IAS in turns. No track adjustment before departure end of runway.	4000 FT	As instructed by BRØNNØY INFORMATION
VEGAS 6C (VEGAS SIX CHARLIE DEPARTURE)	Climb on track 020°. At DME 1.8 BNN turn left on track 236°. Intercept R-266 BNN. Continue climb on R-266 BNN to VEGAS.	A MNM climb gradient of 7.0% (425 FT/NM) is required to 2500 FT. If unable to comply, inform ATC. Maximum 150 KT IAS in turns. No track adjustment before departure end of runway.	4000 FT	As instructed by BRØNNØY INFORMATION