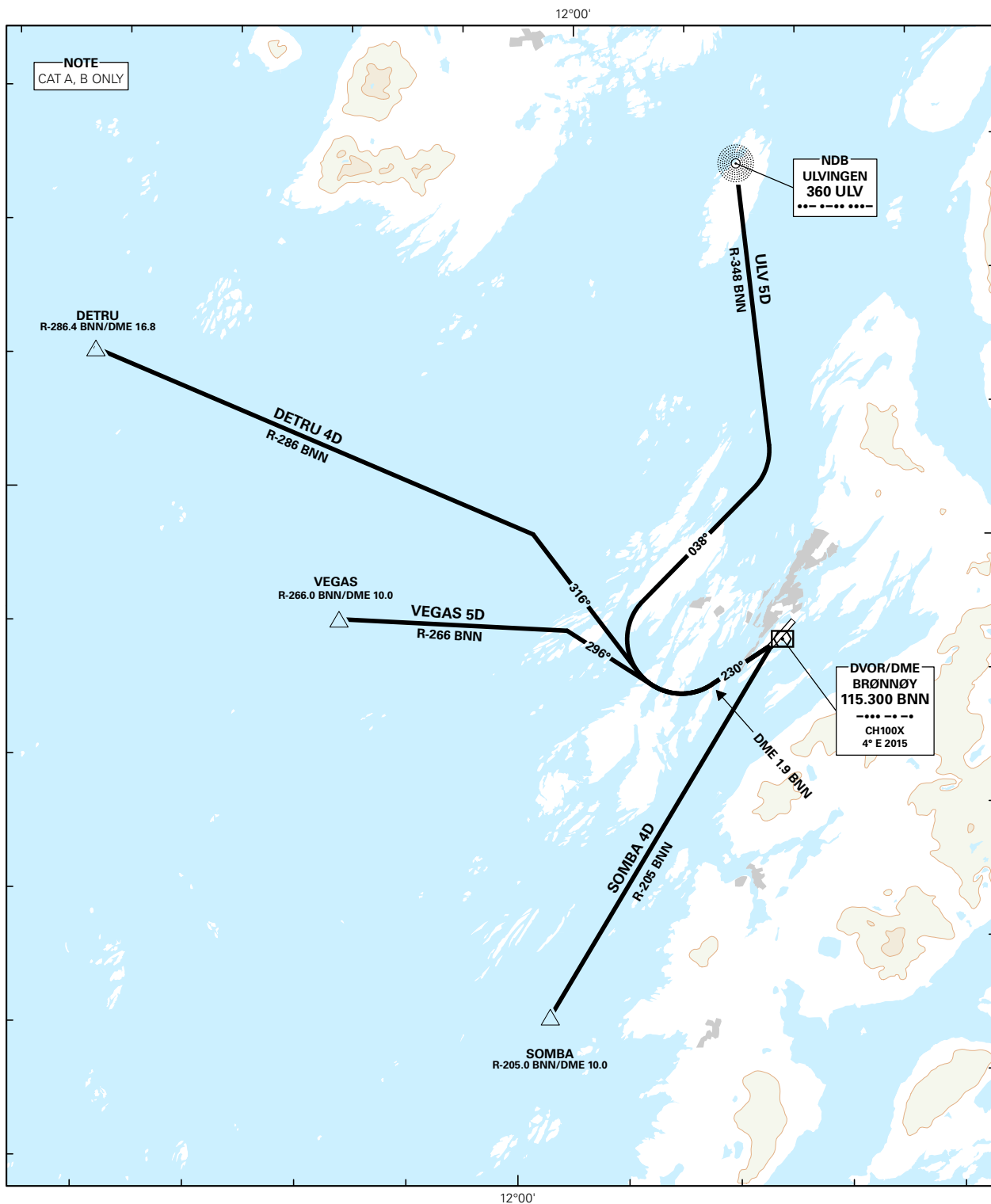


## STANDARD DEPARTURE CHART INSTRUMENT - ICAO

<p>MSA 25 NM BNN</p>	ATIS: 135.900	ALT AND ELEV ARE IN FT DIST IN NM			BRØNNØYSUND/BRØNNØY  RWY 22  NORWAY  DETRU 4D, SOMBA 4D, ULV 5D, VEGAS 5D
	APP: 127.900				
	AFIS: 119.600				
	VDF: 119.600				
		1:250 000	VAR: 3.6 ° E (2015)	TA 7000	

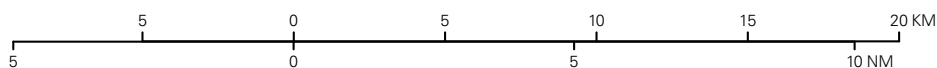
RWY 22

NORWAY



SID DESCRIPTION OVERLEAF  
DESCRIPTION OF WAYPOINTS, REF ENR 4.4

ATS AIRSPACE CLASSIFICATIONS: REF ENR 1.4  
LEGEND: REF GEN 2.3



CHANGES: TRACKS ADDED TO CHART, EDITORIALS.

## STANDARD DEPARTURE ROUTES - INSTRUMENT

BRØNNØYSUND  
RWY 22**VECTORIZING:**

Vectoring involving deviation from SID may be used by NORWAY CONTROL to expedite outbound traffic.

**RADIO COMMUNICATION  
FAILURE:**

Squawk 7600.

In case of RCF after take-off, ACFT shall maintain last cleared and acknowledged level until passing DME 15 or R-015 BNN for ULV departures /R-147 BNN for SOMBA departures (whichever occurs first). Then climb to the cruising level stated in the CPL and proceed to the most direct route to the cleared ATS route. ACFT under vectoring shall, after set transponder to 7600, continue on heading last cleared and acknowledged for two (2) minutes, then proceed to the most direct route to join the cleared ATS-route.

DESIGNATOR	ROUTE	RESTRICTIONS	CLIMB TO	CONTACT
<b>DETRU 4D</b> (DETRU FOUR DELTA DEPARTURE)	Climb on track 230°. At DME 1.9 BNN turn right on track 316°. Intercept R-286 BNN. Continue climb on R-286 BNN to DETRU.	A MNM climb gradient of 4.6% (279 FT/NM) is required until 3000 FT. If unable to comply, inform ATC.  Max 150 KT IAS in turns. No track adjustment before departure end of runway.	4000 FT	As instructed by BRØNNØY INFORMATION
<b>SOMBA 4D</b> (SOMBA FOUR DELTA DEPARTURE)	After take-off turn left to intercept R-205 BNN. Continue climb on R-205 BNN to SOMBA.	A MNM climb gradient of 5.5% (334 FT/NM) is required until 4000 FT. If unable to comply, inform ATC.  No track adjustment before departure end of runway.	4000 FT	As instructed by BRØNNØY INFORMATION
<b>ULV 5D</b> (ULVINGEN FIVE DELTA DEPARTURE)	Climb on track 230°. At DME 1.9 BNN turn right on track 038°. Intercept R-348 BNN. Continue climb on R-348 BNN to ULV .	A MNM climb gradient of 5.5% (334 FT/NM) is required until 4000 FT. If unable to comply, inform ATC.  Max 150 KT IAS in turns. No track adjustment before departure end of runway.	4000 FT	As instructed by BRØNNØY INFORMATION
<b>VEGAS 5D</b> (VEGAS FIVE DELTA DEPARTURE)	Climb on track 230°. At DME 1.9 BNN turn right on track 296°. Intercept R-266 BNN. Continue climb on R-266 BNN to VEGAS.	A MNM climb gradient of 4.5% (273 FT/NM) is required until 3000 FT. If unable to comply, inform ATC.  Max 150 KT IAS in turns. No track adjustment before departure end of runway.	4000 FT	As instructed by BRØNNØY INFORMATION