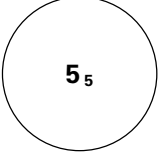
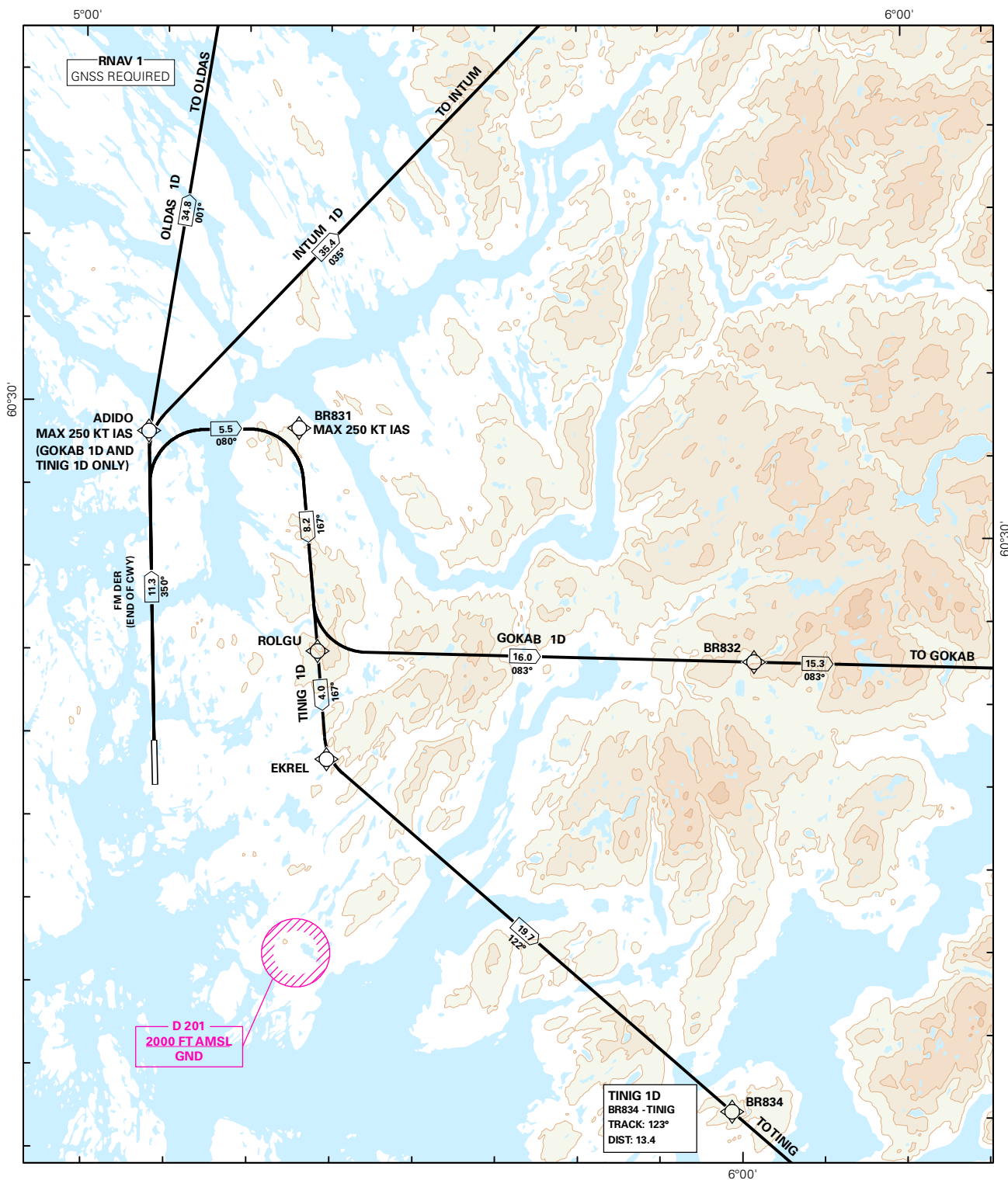


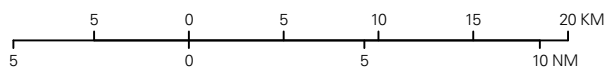
## STANDARD DEPARTURE CHART INSTRUMENT (RNAV 1 SID BASED ON GNSS)

 <p>MSA 25 NM ARP</p>	ATIS: 125.250	ALT AND ELEV ARE IN FT DIST IN NM		BERGEN/FLESLAND <b>RWY 35</b> NORWAY	
	APP: 121.000 125.000				
	TWR: 119.100				
	GND: 121.900	1:400 000	VAR: 0.3 ° E (2015)	TA 7000	GOKAB 1D, INTUM 1D, OLDAS 1D, TINIG 1D



SID DESCRIPTION OVERLEAF  
DESCRIPTION OF WAYPOINTS, REF ENR 4.4

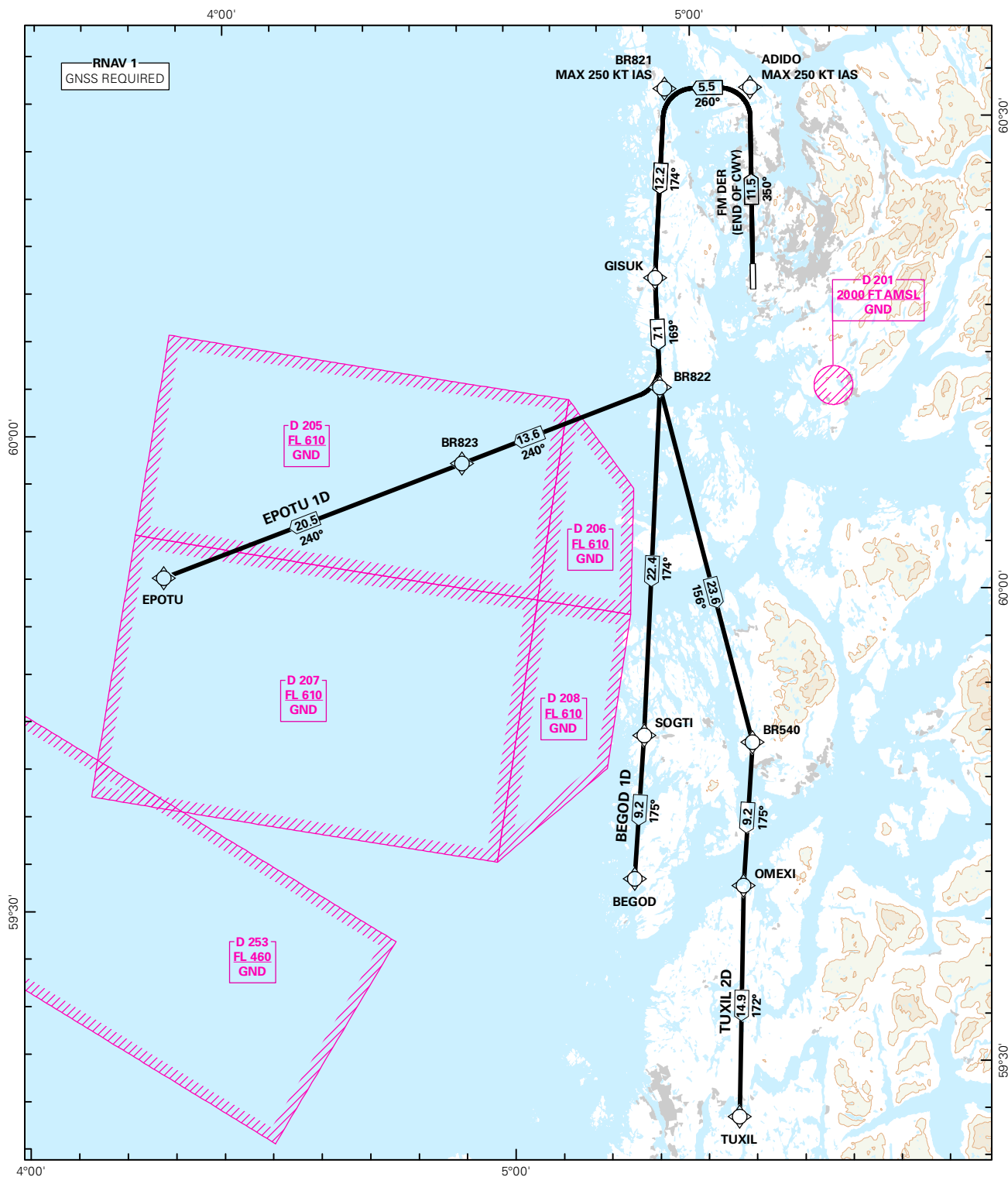
ATS AIRSPACE CLASSIFICATIONS: REF ENR 1.4  
LEGEND: REF GEN 2.3



CHANGES: NEW PROCEDURES.

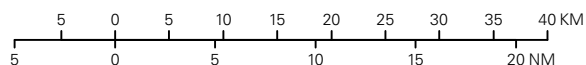
## STANDARD DEPARTURE CHART INSTRUMENT (RNAV 1 SID BASED ON GNSS)

<div><div></div><div>5<sub>5</sub></div></div> <div>MSA 25 NM ARP</div>	ATIS: 125.250	ALT AND ELEV ARE IN FT DIST IN NM			FLESLAND  RWY 35  NORWAY  BEGOD 1D, EPOTU 1D, TUXIL 2D
	APP: 121.000 125.000 118.850				
	TWR: 119.100				
	GND: 121.900	1:700 000	VAR: 0.3 ° E (2015)	TA 7000	



SID DESCRIPTION OVERLEAF  
DESCRIPTION OF WAYPOINTS, REF ENR 4.4

ATS AIRSPACE CLASSIFICATIONS: REF ENR 1.4  
LEGEND: REF GEN 2.3



CHANGES: TUXIL 2D

**STANDARD DEPARTURE ROUTES - INSTRUMENT  
(RNAV 1 SID BASED ON GNSS)**
**BERGEN/Flesland  
RWY 35**

**GENERAL:** Surveillance service shall be available.

**RADIO  
COMMUNICATION  
FAILURE:**

Squawk A7600. Maintain last assigned level until passing limits as described in "CLIMB TO"-table for each individual SID (e.g. ADIDO for BEGOD 1D), then climb to CPL cruising LVL. ACFT under vectoring shall, after set transponder to A7600, proceed in the most direct manner possible to rejoin the CPL route no later than the next significant point, climbing to the CPL cruising LVL, taking into consideration the applicable MNM flight ALT.

**VECTORIZING/  
DIRECT ROUTING:**

When being vectored or cleared for DCT routing, the climb gradient(s) stated in SID "RESTRICTIONS"-table apply.

**NON RNAV 1 ACFT:**

At first contact with FLESLAND ATC state "UNABLE RNAV 1 DUE (reason)". OMNI-DIRECTIONAL DEPARTURE available (see ENBR AD 2.24).

**NOTE:**

The segment distances from ADIDO to BR821, and from ADIDO to BR831, are based on average flight path criteria.

DESIGNATOR	ROUTE	RESTRICTIONS	CLIMB TO	CONTACT
<b>BEGOD 1D</b> (BEGOD ONE DELTA DEPARTURE)	To ADIDO on course 350°, turn left to BR821, to GISUK, to BR822, to SOGTI, to BEGOD.	MNM climb gradient 5.0% (304 FT/NM) to 4000 FT.  MAX 250 KT IAS at ADIDO and BR821.  If unable to comply, inform ATC.	4000 FT.  RCF: If no further climb received prior to ADIDO, climb to CPL cruising LVL.	When airborne, contact FLESLAND APPROACH 121.000 MHZ
<b>EPOTU 1D</b> (EPOTU ONE DELTA DEPARTURE)	To ADIDO on course 350°, turn left to BR821, to GISUK, to BR822, to BR823, to EPOTU.	MNM climb gradient 5.0% (304 FT/NM) to 4000 FT.  MAX 250 KT IAS at ADIDO and BR821.  If unable to comply, inform ATC.	4000 FT.  RCF: If no further climb received prior to ADIDO, climb to CPL cruising LVL.	When airborne, contact FLESLAND APPROACH 121.000 MHZ
<b>GOKAB 1D</b> (GOKAB ONE DELTA DEPARTURE)	To ADIDO on course 350°, turn right to BR831, to ROLGU, to BR832, to GOKAB.	MNM climb gradient 5.0% (304 FT/NM) to 4000 FT.  MAX 250 KT IAS at ADIDO and BR831.  If unable to comply, inform ATC.	4000 FT.  RCF: If no further climb received prior to ADIDO, climb to CPL cruising LVL.	When airborne, contact FLESLAND APPROACH 125.000 MHZ
<b>INTUM 1D</b> (INTUM ONE DELTA DEPARTURE)	To ADIDO on course 350°, to INTUM.	MNM climb gradient 5.0% (304 FT/NM) to 4000 FT.  If unable to comply, inform ATC.	4000 FT.  RCF: If no further climb received prior to ADIDO, climb to CPL cruising LVL.	When airborne, contact FLESLAND APPROACH 125.000 MHZ
<b>OLDAS 1D</b> (OLDAS ONE DELTA DEPARTURE)	To ADIDO on course 350°, to OLDAS.	MNM climb gradient 5.0% (304 FT/NM) to 4000 FT.  If unable to comply, inform ATC.	4000 FT.  RCF: If no further climb received prior to ADIDO, climb to CPL cruising LVL.	When airborne, contact FLESLAND APPROACH 121.000 MHZ
<b>TINIG 1D</b> (TINIG ONE DELTA DEPARTURE)	To ADIDO on course 350°, turn right to BR831, to ROLGU, to EKREL, to BR834, to TINIG.	MNM climb gradient 5.0% (304 FT/NM) to 4000 FT.  MAX 250 KT IAS at ADIDO and BR831.  If unable to comply, inform ATC.	4000 FT.  RCF: If no further climb received prior to ADIDO, climb to CPL cruising LVL.	When airborne, contact FLESLAND APPROACH 125.000 MHZ
<b>TUXIL 2D</b> (TUXIL TWO DELTA DEPARTURE)	To ADIDO on course 350°, turn left to BR821, to GISUK, to BR822, to BR540, to OMEXI, to TUXIL.	MNM climb gradient 5.0% (304 FT/NM) to 4000 FT.  Cross OMEXI at or above FL 160 (MNM climb gradient 4.1% (249 FT/NM) from 4000 FT).  MAX 250 KT IAS at ADIDO and BR821.  If unable to comply, inform ATC.	4000 FT.  RCF: If no further climb received prior to ADIDO, climb to CPL cruising LVL.	When airborne, contact FLESLAND APPROACH 121.000 MHZ