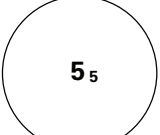
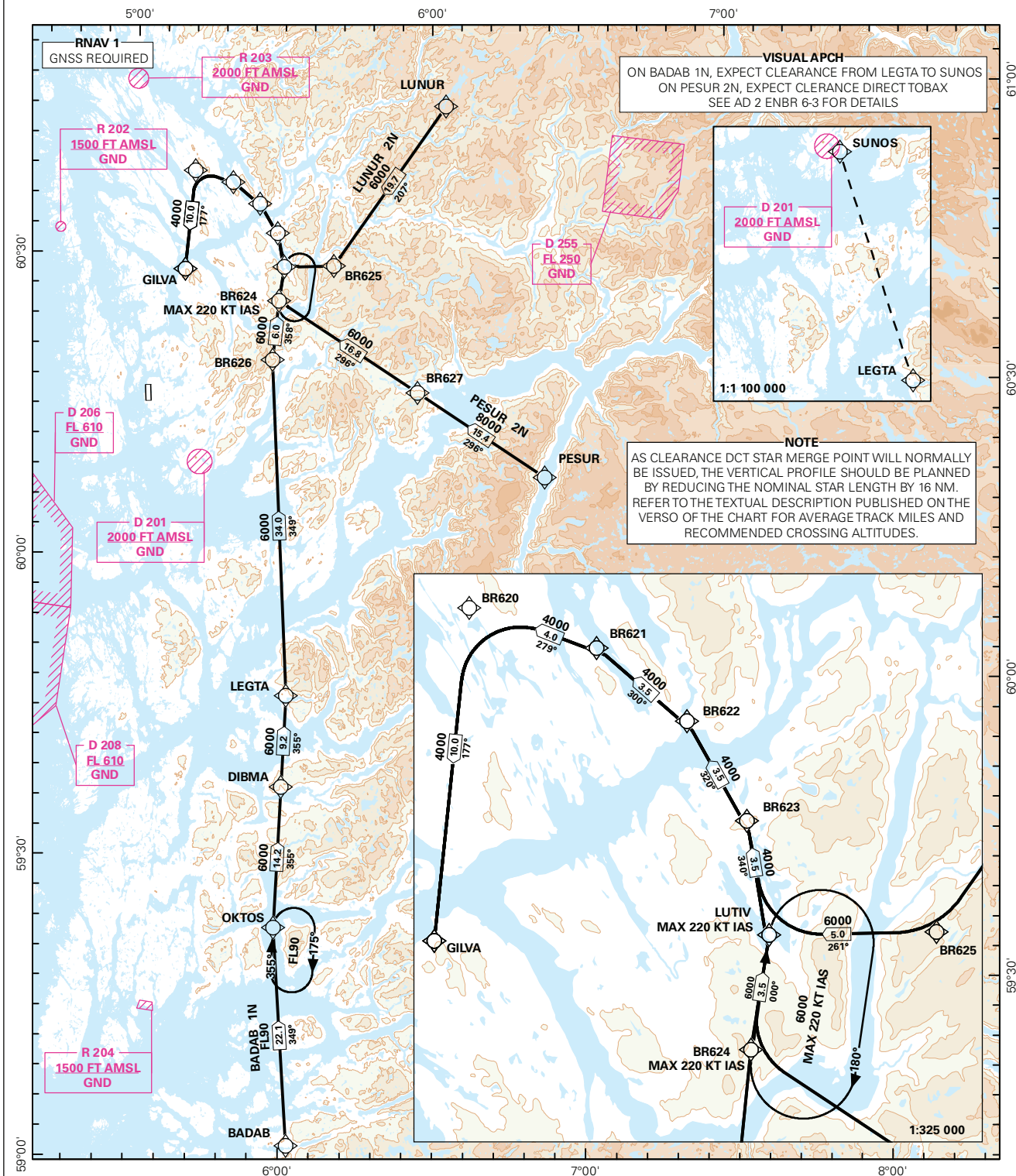
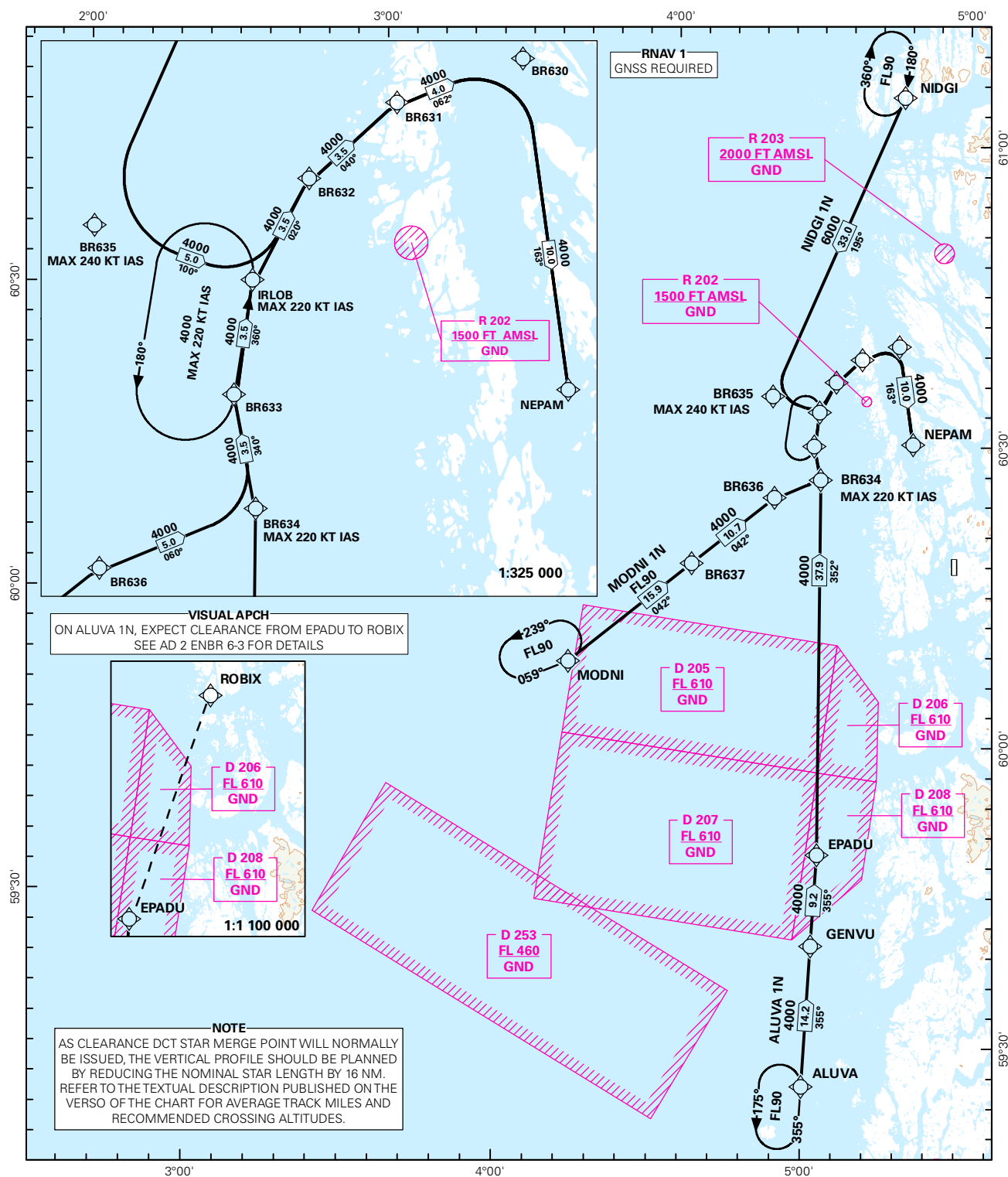
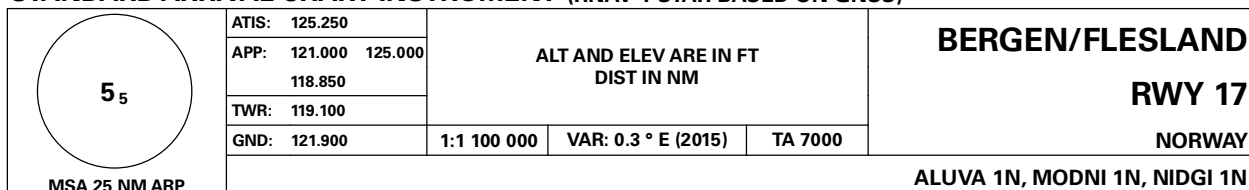


STANDARD ARRIVAL CHART INSTRUMENT (RNAV 1 STAR BASED ON GNSS)

 5₅ MSA 25 NM ARP	ATIS: 125.250	ALT AND ELEV ARE IN FT DIST IN NM			BERGEN/FLESAND RWY 17 NORWAY BADAB 1N, LUNUR 2N, PESUR 2N
	APP: 121.000 125.000				
	118.850				
	TWR: 119.100				
	GND: 121.900	1:1 100 000	VAR: 0.3 ° E (2015)	TA 7000	



STANDARD ARRIVAL CHART INSTRUMENT (RNAV 1 STAR BASED ON GNSS)



STAR DESCRIPTION OVERLEAF
DESCRIPTION OF WAYPOINTS, REF ENR 4.4

ATS AIRSPACE CLASSIFICATIONS: REF ENR 1.4
LEGEND: REF GEN 2.3

CHANGES: NOTEBOX:

Avinor

17 SEP 2015

**STANDARD ARRIVAL ROUTES - INSTRUMENT
(RNAV 1 STAR BASED ON GNSS)**
**BERGEN/Flesland
RWY 17**

GENERAL: Class A GNSS shall not be used.
Surveillance service shall be available.

LOSS OF RNAV 1 CAPABILITY: Request vectoring.

VECTORIZING: Vectoring may be used for sequencing.

RADIO COMMUNICATION FAILURE: Squawk A7600. Proceed on STAR and make APCH to RWY 17.

DESIGNATOR	ROUTE	RESTRICTIONS	DESCEND	CLEARANCE LIMIT
ALUVA 1N (ALUVA ONE NOVEMBER ARRIVAL)	From ALUVA to GENVU, to EPADU, to BR634, to BR633, to IRLOB, to BR632, to BR631, to BR630, turn right to NEPAM.	Cross ALUVA at or above FL90. MAX 220 KT IAS at BR634. Cross NEPAM at or above 4000 FT.	As cleared by ATC.	NEPAM
BADAB 1N (BADAB ONE NOVEMBER ARRIVAL)	From BADAB to OKTOS, to DIBMA, to LEGTA, to BR626, to BR624, to LUTIV, to BR623, to BR622, to BR621, to BR620, turn left to GILVA.	Cross OKTOS at or above FL90. MAX 220 KT IAS at BR624. Cross LUTIV at or above 6000 FT. Cross GILVA at or above 4000 FT.	As cleared by ATC.	GILVA
LUNUR 2N (LUNUR TWO NOVEMBER ARRIVAL)	From LUNUR to BR625, to LUTIV, to BR623, to BR622, to BR621, to BR620, turn left to GILVA.	Cross LUTIV at or above 6000 FT. MAX 220 KT IAS at LUTIV. Cross GILVA at or above 4000 FT.	As cleared by ATC.	GILVA
MODNI 1N (MODNI ONE NOVEMBER ARRIVAL)	From MODNI to BR637, to BR636, to BR634, to BR633, to IRLOB, to BR632, to BR631, to BR630, turn right to NEPAM.	Cross BR637 at or above FL90. MAX 220 KT IAS at BR634. Cross NEPAM at or above 4000 FT.	As cleared by ATC.	NEPAM
NIDGI 1N (NIDGI TWO NOVEMBER ARRIVAL)	From NIDGI to BR635, turn left to IRLOB, to BR632, to BR631, to BR630, turn right to NEPAM.	Cross NIDGI at or above FL90. Cross BR635 at or above 6000 FT. MAX 240 KT IAS at BR635. MAX 220 KT IAS at IRLOB. Cross NEPAM at or above 4000 FT.	As cleared by ATC.	NEPAM
PESUR 2N (PESUR ONE NOVEMBER ARRIVAL)	From PESUR to BR627, to BR624, to LUTIV, to BR623, to BR622, to BR621, to BR620, turn left to GILVA.	Cross BR627 at or above 8000 FT. MAX 220 KT IAS at BR624. Cross LUTIV at or above 6000 FT. Cross GILVA at or above 4000 FT.	As cleared by ATC.	GILVA

Note: As clearance DCT STAR merge point will normally be issued, descend should be planned by using the average track miles from the STAR starting point to THR as indicated below.

DESIGNATOR	AVERAGE TRACK MILES (NM)	RECOMMENDED ALTITUDE
ALUVA 1N	86	Cross BR634 at 7000 FT
BADAB 1N	110	Cross BR624 at 7000 FT
LUNUR 2N	47	Cross BR625 at 7000 FT
MODNI 1N	56	Cross BR634 at 7000 FT
NIDGI 1N	55	Cross BR635 at 7000 FT
PESUR 2N	57	Cross BR624 at 7000 FT