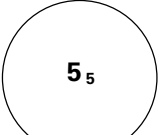
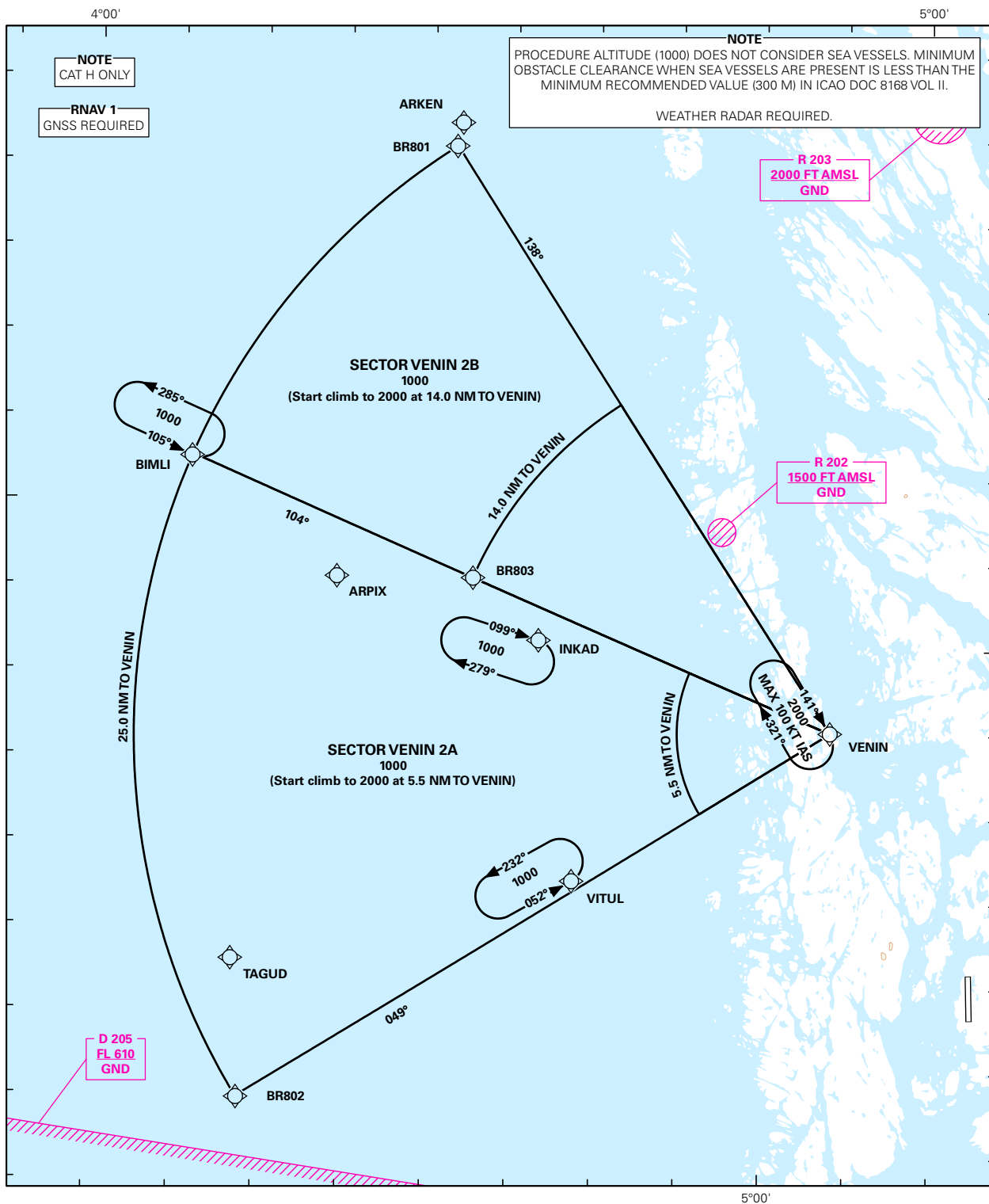


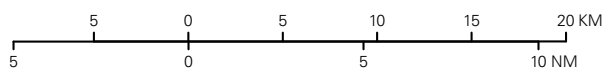
## HELICOPTER POINT BOUNDARY STAR (RNAV 1 STAR BASED ON GNSS)

 <b>MSA 25 NM ARP</b>	ATIS: 125.250	ALT AND ELEV ARE IN FT DIST IN NAUTICAL MILES		<b>BERGEN/FLESLAND</b> <b>RWY 17</b> <b>NORWAY</b>	
	APP: 121.000 125.000 118.850				
	TWR: 119.100				
	GND: 121.900				
		1:400 000	VAR: 0.3 ° E (2015)	TA 7000	<b>SECTOR VENIN 2A, SECTOR VENIN 2B</b>



STAR DESCRIPTION OVERLEAF  
DESCRIPTION OF WAYPOINTS, REF ENR 4.4

ATS AIRSPACE CLASSIFICATIONS: REF ENR 1.4  
LEGEND: REF GEN 2.3



CHANGES: VENIN 2A, VENIN 2B, MAGNETIC VARIATION.

**HELICOPTER POINT BOUNDARY STAR - INSTRUMENT  
(RNAV 1 STAR BASED ON GNSS)****BERGEN/Flesland  
RWY 17**

**REMARKS:** CAT H only.

**GENERAL:** Class A GNSS shall not be used.  
Surveillance service shall be available.

**LOSS OF RNAV 1  
CAPABILITY:** Request vectoring.

**VECTORIZING:** Vectoring may be used for sequencing.

**RADIO COMMUNICATION  
FAILURE:** Squawk A7600. Proceed on STAR and make APCH to RWY 17.

DESIGNATOR	ROUTE	RESTRICTIONS	DESCEND/CLIMB	CLEARANCE LIMIT
<b>SECTOR VENIN 2A</b>  (SECTOR VENIN TWO ALFA ARRIVAL)	Direct to VENIN	Start climb to 2000 FT at 5.5 NM TO VENIN. MNM climb gradient 4.0% (240 FT/NM).	Climb to 2000 FT according to restrictions.	VENIN
<b>SECTOR VENIN 2B</b>  (SECTOR VENIN TWO BRAVO ARRIVAL)	Direct to VENIN	Start climb to 2000 FT at 14 NM TO VENIN. MNM climb gradient 4.0% (240 FT/NM).	Climb to 2000 FT according to restrictions.	VENIN