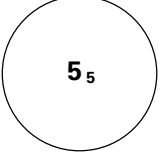
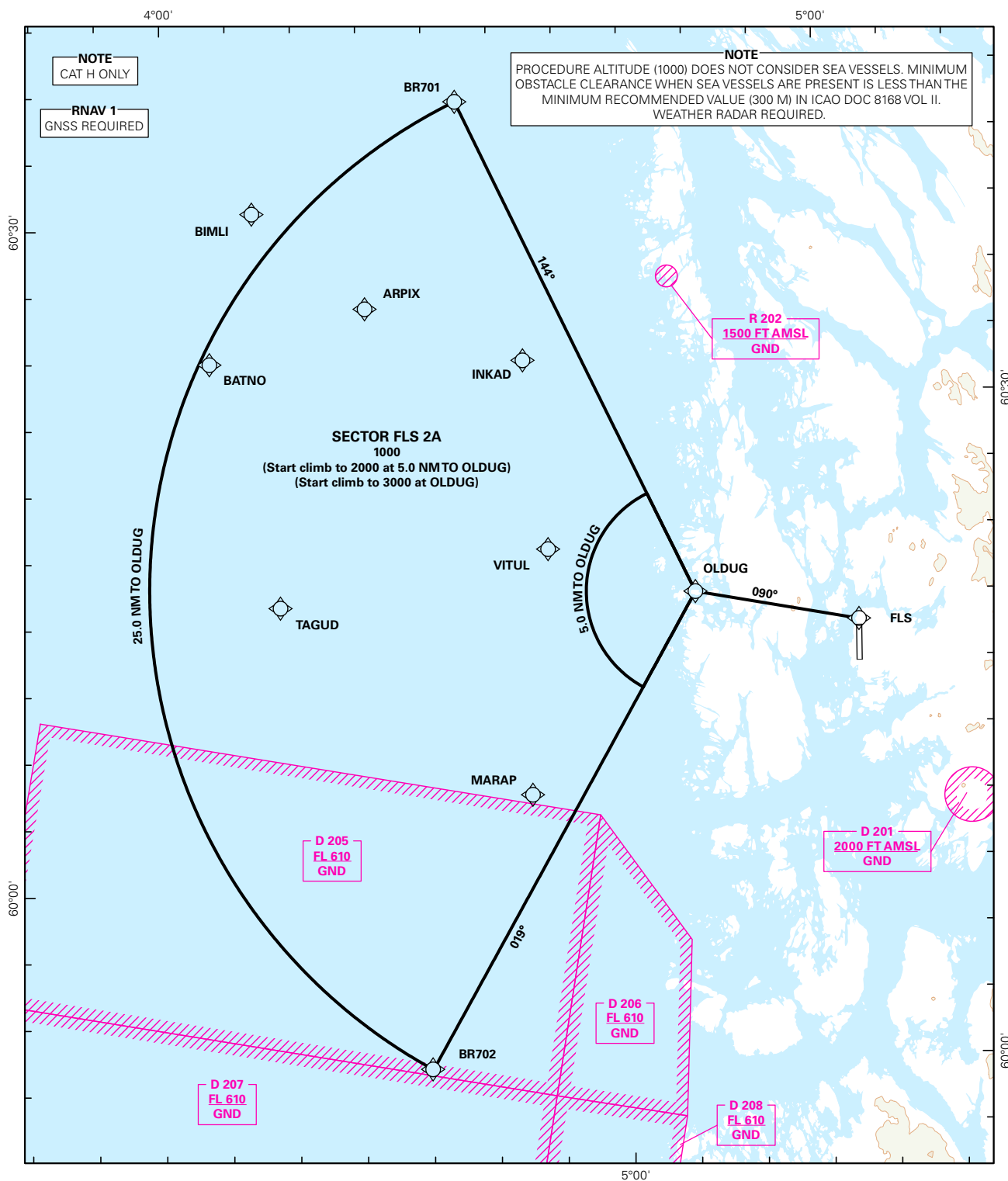


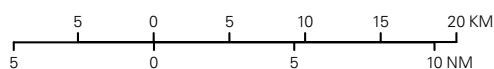
HELICOPTER POINT BOUNDARY STAR (RNAV 1 STAR BASED ON GNSS)

 MSA 25 NM ARP	ATIS: 125.250	ALT AND ELEV ARE IN FT DIST IN NM			BERGEN/FLESLEND RWY 17/35 NORWAY SECTOR FLS 2A
	APP: 121.000 125.000 118.850				
	TWR: 119.100				
	GND: 121.900	1:500 000	VAR: 0.3 ° E (2015)	TA 7000	



STAR DESCRIPTION OVERLEAF
DESCRIPTION OF WAYPOINTS, REF ENR 4.4

ATS AIRSPACE CLASSIFICATIONS: REF ENR 1.4
LEGEND: REF GEN 2.3



CHANGES: EDITORIALS.

**HELICOPTER POINT BOUNDARY STAR - INSTRUMENT
(RNAV 1 STAR BASED ON GNSS)****BERGEN/Flesland
RWY 17/35****REMARKS:** CAT H only.**GENERAL:** Class A GNSS shall not be used.
Surveillance service shall be available.**LOSS OF RNAV 1
CAPABILITY:** Request vectoring.**VECTORIZING:** Vectoring may be used for sequencing.**RADIO COMMUNICATION
FAILURE:** Squawk A7600. Proceed on STAR and make APCH to assigned RWY.

DESIGNATOR	ROUTE	RESTRICTIONS	DESCEND/CLIMB	CLEARANCE LIMIT
SECTOR FLS 2A (SECTOR FLESLAND TWO ALFA ARRIVAL)	Direct to OLDUG, to FLS	Start climb to 2000 FT at 5.0 NM TO OLDUG. Start climb to 3000 FT at OLDUG. MNM climb gradient 4.0% (240 FT/NM).	Climb to 3000 FT according to restrictions.	FLS