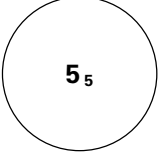
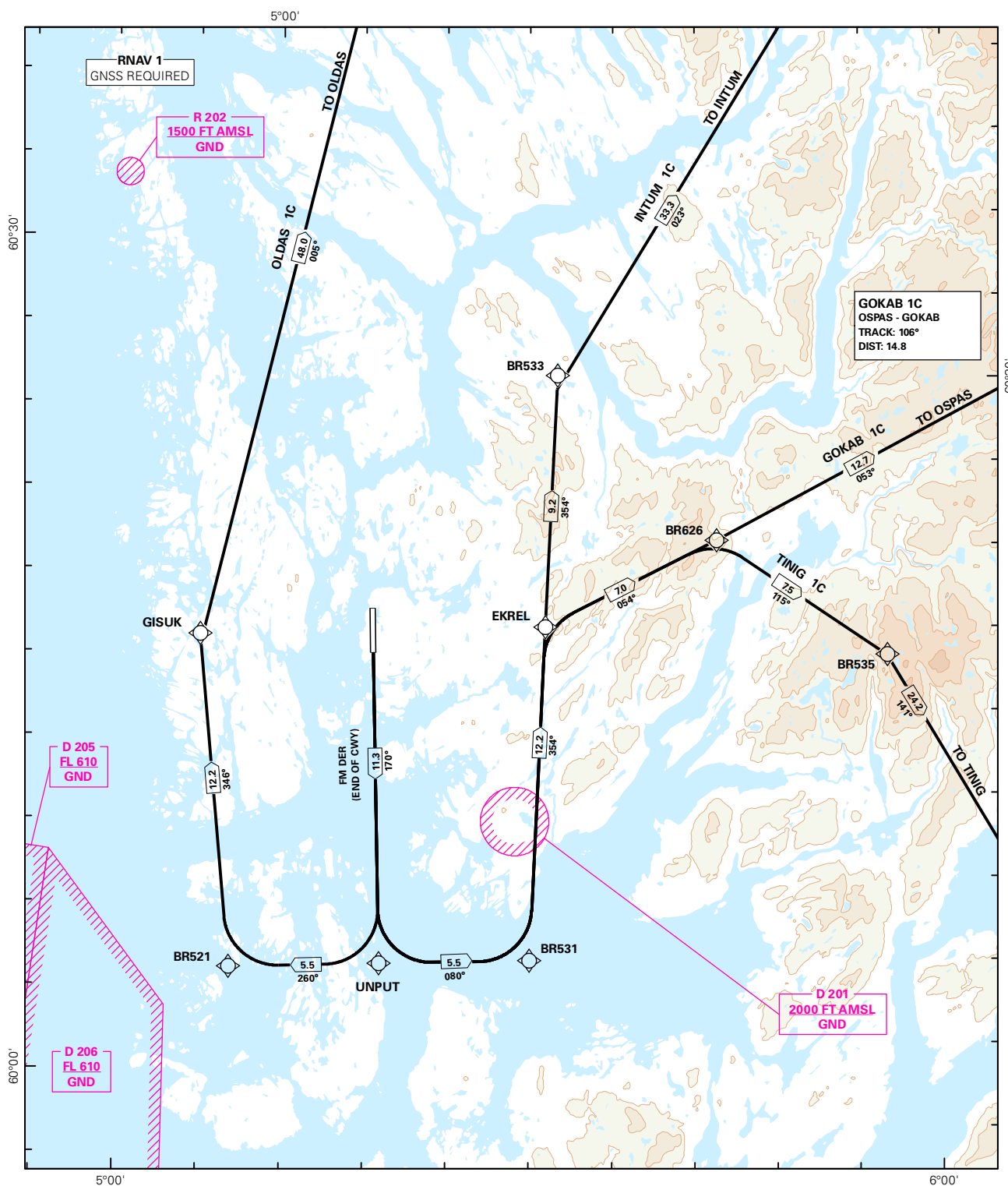


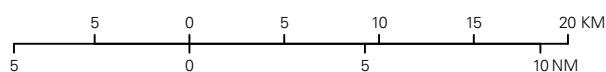
## STANDARD DEPARTURE CHART INSTRUMENT (RNAV 1 SID BASED ON GNSS)

 <b>5<sub>5</sub></b> <b>MSA 25 NM ARP</b>	ATIS: 125.250	ALT AND ELEV ARE IN FT DIST IN NM		<b>BERGEN/FLESAND</b>  <b>RWY 17</b>  <b>NORWAY</b>	
	APP: 121.000 125.000				
	118.850				
	TWR: 119.100				
	GND: 121.900	1:400 000	VAR: 0.3 ° E (2015)	TA 7000	GOKAB 1C, INTUM 1C, OLDAS 1C, TINIG 1C



SID DESCRIPTION OVERLEAF  
DESCRIPTION OF WAYPOINTS, REF ENR 4.4

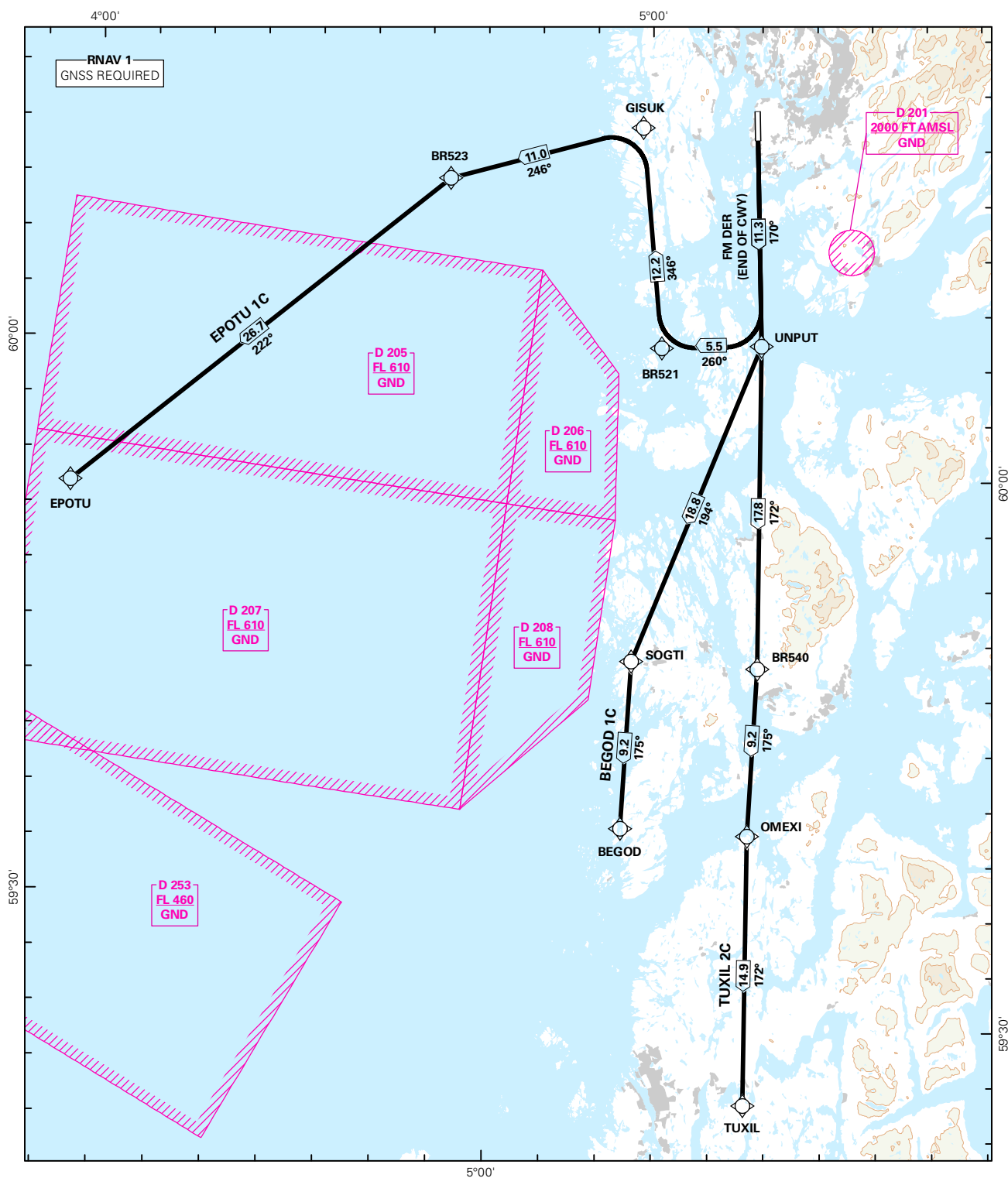
ATS AIRSPACE CLASSIFICATIONS: REF ENR 1.4  
LEGEND: REF GEN 2.3



CHANGES: NEW PROCEDURES.

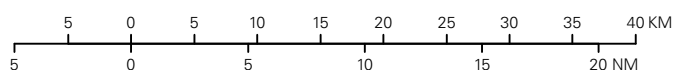
## STANDARD DEPARTURE CHART INSTRUMENT (RNAV 1 SID BASED ON GNSS)

<div style="border: 1px solid black; border-radius: 50%; width: 60px; height: 60px; display: flex; align-items: center; justify-content: center; margin: 0 auto;"> <div style="font-size: 24px; font-weight: bold;">5</div> <div style="font-size: 12px; margin-left: 5px;">5</div> </div>	ATIS: 125.250	ALT AND ELEV ARE IN FT DIST IN NM			<b>FLESLAND</b>  <b>RWY 17</b>  <b>NORWAY</b>  <b>BEGOD 1C, EPOTU 1C, TUXIL 2C</b>
	APP: 121.100 125.000 118.850				
	TWR: 119.100				
	GND: 121.900	1:600 000	VAR: 0.3 ° E (2015)	TA 7000	



SID DESCRIPTION OVERLEAF  
DESCRIPTION OF WAYPOINTS, REF ENR 4.4

ATS AIRSPACE CLASSIFICATIONS: REF ENR 1.4  
LEGEND: REF GEN 2.3



CHANGES: TUXIL 2C

**STANDARD DEPARTURE ROUTES - INSTRUMENT  
(RNAV 1 SID BASED ON GNSS)**
**BERGEN/Flesland  
RWY 17**

**GENERAL:** Surveillance service shall be available.

**RADIO COMMUNICATION FAILURE:** Squawk A7600. Maintain last assigned level until passing limits as described in "CLIMB TO"-table for each individual SID (e.g. UNPUT for BEGOD 1C), then climb to CPL cruising LVL. ACFT under vectoring shall, after set transponder to A7600, proceed in the most direct manner possible to rejoin the CPL route no later than the next significant point, climbing to the CPL cruising LVL, taking into consideration the applicable MNM flight ALT.

**VECTORIZING/DIRECT ROUTING:** When being vectored or cleared for DCT routing, the climb gradient(s) stated in SID "RESTRICTIONS"-table apply.

**NON RNAV 1 ACFT:** At first contact with FLESLAND ATC state "UNABLE RNAV 1 DUE (reason)". OMNI-DIRECTIONAL DEPARTURE available (see ENBR AD 2.24).

DESIGNATOR	ROUTE	RESTRICTIONS	CLIMB TO	CONTACT
<b>BEGOD 1C</b> (BEGOD ONE CHARLIE DEPARTURE)	To UNPUT on course 170°, to SOGTI, to BEGOD.	MNM climb gradient 5.0% (304 FT/NM) to 4000 FT.  If unable to comply inform ATC.	4000 FT.  RCF: If no further climb received prior to UNPUT, climb to CPL cruising LVL.	When airborne, contact FLESLAND APPROACH 121.000 MHZ
<b>EPOTU 1C</b> (EPOTU ONE CHARLIE DEPARTURE)	To UNPUT on course 170°, turn right to BR521, to GISUK, turn left to BR523, to EPOTU.	MNM climb gradient 5.0% (304 FT/NM) to 4000 FT.  If unable to comply, inform ATC.	4000 FT.  RCF: If no further climb received prior to UNPUT, climb to CPL cruising LVL.	When airborne, contact FLESLAND APPROACH 121.000 MHZ
<b>GOKAB 1C</b> (GOKAB ONE CHARLIE DEPARTURE)	To UNPUT on course 170°, turn left to BR531, to EKREL, to BR626, to OSPAS, to GOKAB.	MNM climb gradient 5.0% (304 FT/NM) to 4000.  If unable to comply, inform ATC.	4000 FT.  RCF: If no further climb received prior to UNPUT, climb to CPL cruising LVL.	When airborne, contact FLESLAND APPROACH 125.000 MHZ
<b>INTUM 1C</b> (INTUM ONE CHARLIE DEPARTURE)	To UNPUT on course 170°, turn left to BR531, to EKREL, to BR533, to INTUM.	MNM climb gradient 5.0% (304 FT/NM) to 4000 FT.  If unable to comply, inform ATC.	4000 FT.  RCF: If no further climb received prior to UNPUT, climb to CPL cruising LVL.	When airborne, contact FLESLAND APPROACH 125.000 MHZ
<b>OLDAS 1C</b> (OLDAS ONE CHARLIE DEPARTURE)	To UNPUT on course 170°, turn right to BR521, to GISUK, to OLDAS.	MNM climb gradient 5.0% (304 FT/NM) to 4000 FT.  If unable to comply, inform ATC.	4000 FT.  RCF: If no further climb received prior to UNPUT, climb to CPL cruising LVL.	When airborne, contact FLESLAND APPROACH 121.000 MHZ
<b>TINIG 1C</b> (TINIG ONE CHARLIE DEPARTURE)	To UNPUT on course 170°, turn left to BR531, to EKREL, to BR626, to BR535, to TINIG.	MNM climb gradient 5.0% (304 FT/NM) to 4000 FT.  If unable to comply, inform ATC.	4000 FT.  RCF: If no further climb received prior to UNPUT, climb to CPL cruising LVL.	When airborne, contact FLESLAND APPROACH 125.000 MHZ
<b>TUXIL 2C</b> (TUXIL TWO CHARLIE DEPARTURE)	To UNPUT on course 170°, to BR540, to OMEXI, to TUXIL.	MNM climb gradient 5.0% (304 FT/NM) to 4000 FT.  Cross OMEXI at or above FL 160 (MNM climb gradient 7.6% (462 FT/NM) from DER).  If unable to comply, inform ATC.	4000 FT.  RCF: If no further climb received prior to UNPUT, climb to CPL cruising LVL.	When airborne, contact FLESLAND APPROACH 121.000 MHZ