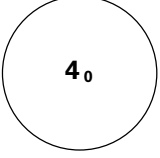
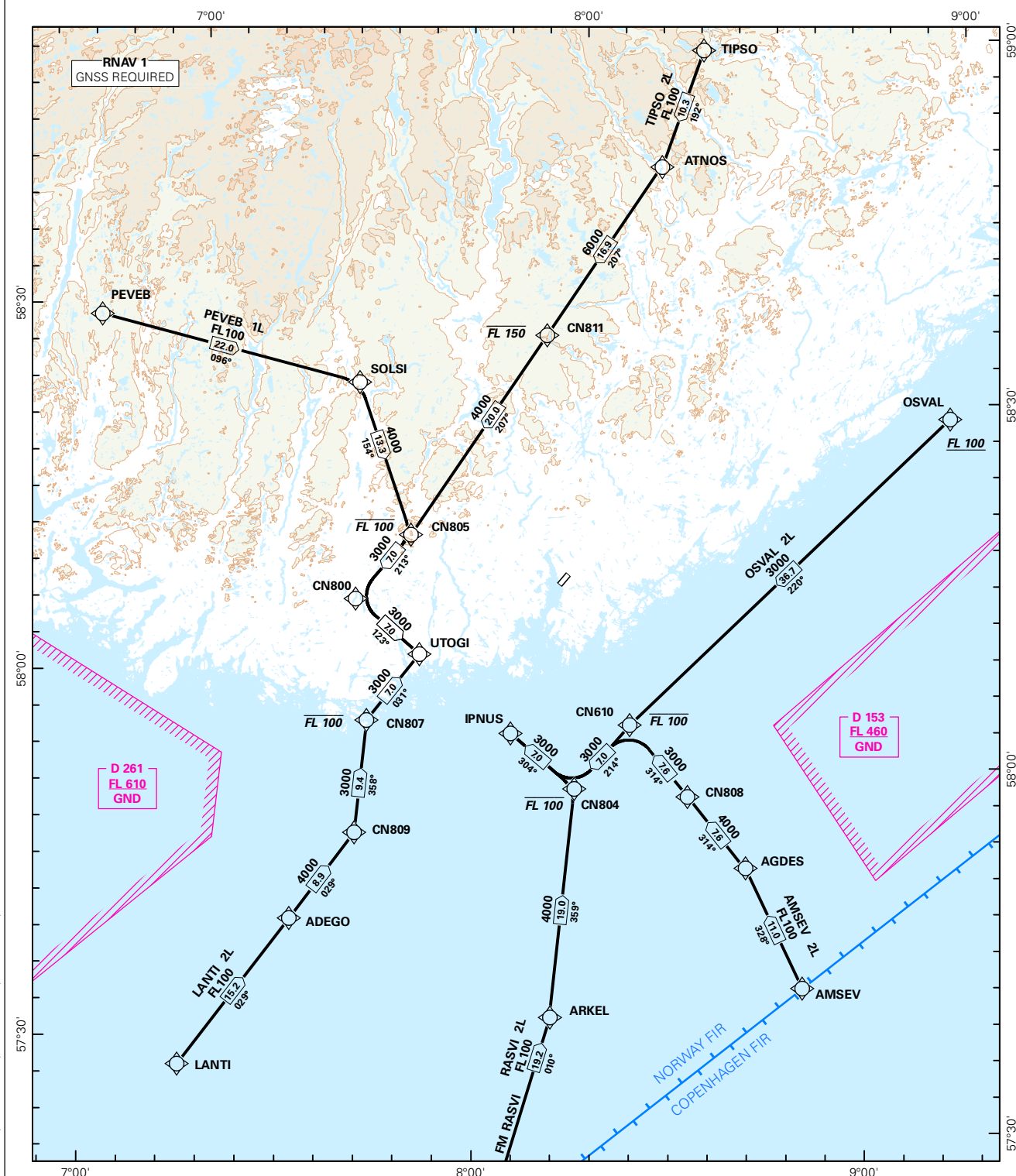


STANDARD ARRIVAL CHART INSTRUMENT (RNAV 1 STAR BASED ON GNSS)

 MSA 25 NM ARP	ATIS: 124.475	ALT AND ELEV ARE IN FT DIST IN NM			KRISTIANSAND/KJEVIK
	APP: 119.950				
	TWR: 119.950 118.100 (122.100)				
	VDF: 119.950	1:900 000	VAR: 1.6 ° E (2015)	TA 7000	NORWAY
AMSEV 2L, LANTI 2L, OSVAL 2L, PEVEB 1L, RASVI 2L, TIPSO 2L					

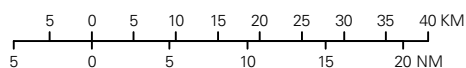
RWY 04

NORWAY



STAR DESCRIPTION OVERLEAF
DESCRIPTION OF WAYPOINTS, REF ENR 4.4

ATS AIRSPACE CLASSIFICATIONS: REF ENR 1.4
LEGEND: REF GEN 2.3



CHANGES: AMSEV 2L, LANTI 2L, OSVAL 2L, PEVEB 1L, RASVI 2L, TIPSO 2L.

**STANDARD ARRIVAL ROUTES - INSTRUMENT
(RNAV 1 STAR BASED ON GNSS)**
**KRISTIANSAND/Kjevik
RWY 04**

GENERAL: Class A GNSS shall not be used.
Surveillance service shall be available.

LOSS OF RNAV 1 CAPABILITY: Request vectoring.

VECTORING: Vectoring may be used for sequencing.

RADIO COMMUNICATION FAILURE: Squawk A7600. Proceed on STAR and make APCH to RWY 04.

DESIGNATOR	ROUTE	RESTRICTIONS	DESCEND	CLEARANCE LIMIT
AMSEV 2L (AMSEV TWO LIMA ARRIVAL)	From AMSEV to AGDES, to CN808, to CN610, to CN804, to IPNUS.	Cross AGDES at or above FL100. Cross CN808 at or above 4000 FT. Cross CN610 between 3000 FT and FL100. Cross IPNUS at or above 3000 FT.	As cleared by ATC.	IPNUS
LANTI 2L (LANTI TWO LIMA ARRIVAL)	From LANTI to ADEGO, to CN809, to CN807, to UTOGI.	Cross ADEGO at or above FL100. Cross CN809 at or above 4000 FT. Cross CN807 between 3000 FT and FL100. Cross UTOGI at or above 3000 FT.	As cleared by ATC.	UTOGI
OSVAL 2L (OSVAL TWO LIMA ARRIVAL)	From OSVAL to CN610, to CN804, to IPNUS.	Cross OSVAL at or above FL100. Cross CN610 between 3000 FT and FL100. Cross IPNUS at or above 3000 FT.	As cleared by ATC.	IPNUS
PEVEB 1L (PEVEB ONE LIMA ARRIVAL)	From PEVEB to SOLSI, to CN805, to CN800, to UTOGI.	Cross SOLSI at or above FL100. Cross CN805 between 4000 FT and FL100. Cross UTOGI at or above 3000 FT.	As cleared by ATC.	UTOGI
RASVI 2L (RASVI TWO LIMA ARRIVAL)	From RASVI to ARKEL, to CN804, to IPNUS.	Cross ARKEL at or above FL100. Cross CN804 between 4000 FT and FL100. Cross IPNUS at or above 3000 FT.	As cleared by ATC.	IPNUS
TIPSO 2L (TIPSO TWO LIMA ARRIVAL)	From TIPSO to ATNOS, to CN811, to CN805, to CN800, to UTOGI.	Cross ATNOS at or above FL100. Cross CN811 between 6000 FT and FL150. Cross CN805 between 4000 FT and FL100. Cross UTOGI at or above 3000 FT.	As cleared by ATC.	UTOGI