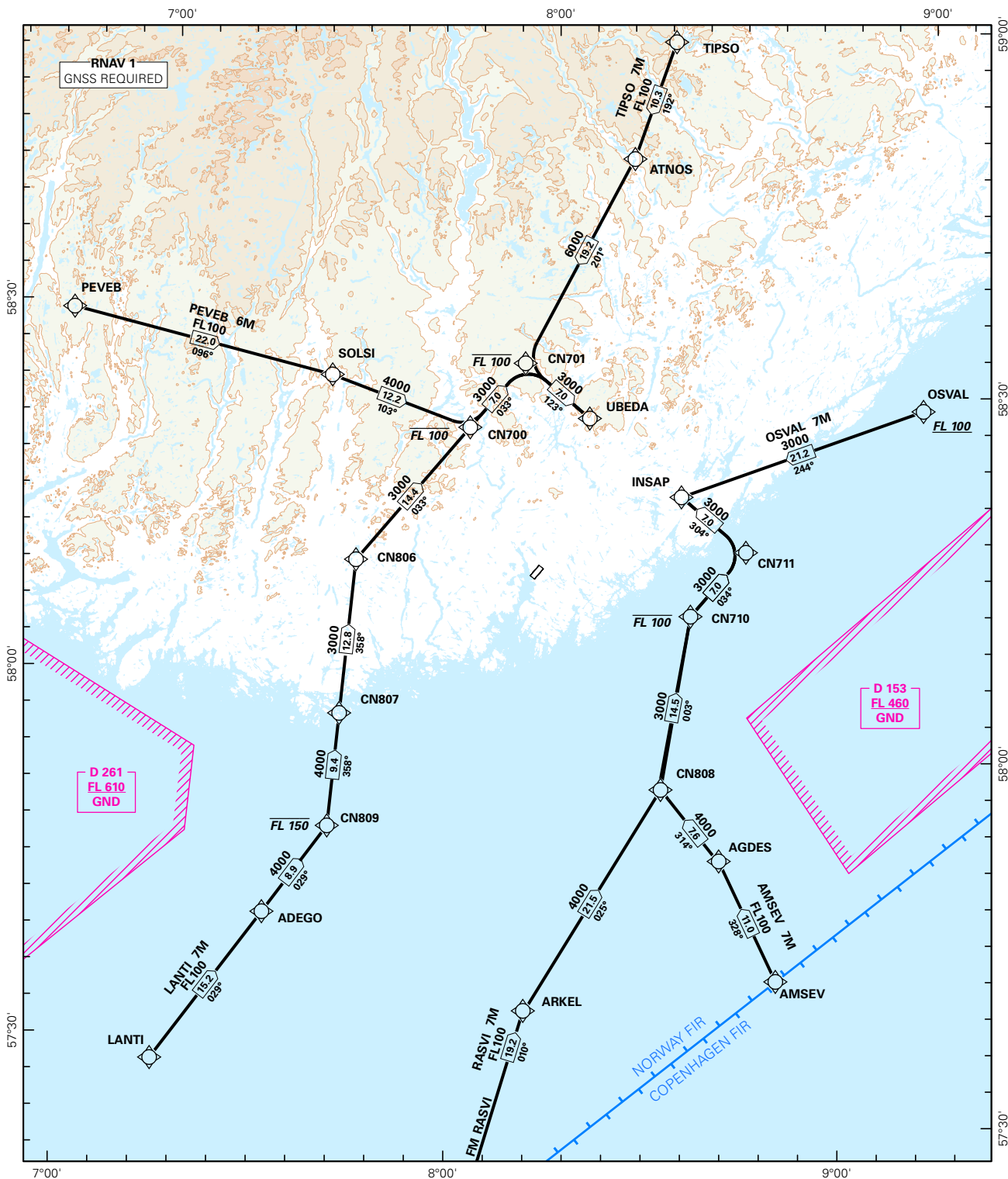


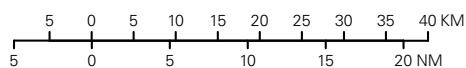
## STANDARD ARRIVAL CHART INSTRUMENT (RNAV 1 STAR BASED ON GNSS)

<div style="border: 1px solid black; border-radius: 50%; width: 80px; height: 80px; display: flex; align-items: center; justify-content: center; margin: 0 auto;"> <div style="font-size: 24px; font-weight: bold;">4<sub>0</sub></div> </div> <div style="text-align: center; font-size: 10px; margin-top: 5px;">MSA 25 NM ARP</div>	ATIS: 124.475	ALT AND ELEV ARE IN FT DIST IN NM			<b>KRISTIANSAND/KJEVIK</b>
	APP: 119.950				
	TWR: 119.950 118.100 (122.100)				
	VDF: 119.950	1:900 000	VAR: 1.6 ° E (2015)	TA 7000	<b>RWY 22</b>
AMSEV 7M, LANTI 7M, OSVAL 7M, PEVEB 6M, RASVI 7M, TIPSO 7M					
NORWAY					



STAR DESCRIPTION OVERLEAF  
DESCRIPTION OF WAYPOINTS, REF ENR 4.4

ATS AIRSPACE CLASSIFICATIONS: REF ENR 1.4  
LEGEND: REF GEN 2.3



CHANGES: AMSEV 7M, LANTI 7M, OSVAL 7M, PEVEB 7M, RASVI 7M, TIPSO 6M.

**STANDARD ARRIVAL ROUTES - INSTRUMENT  
(RNAV 1 STAR BASED ON GNSS)**
**KRISTIANSAND/Kjevik  
RWY 22**

**GENERAL:** Class A GNSS shall not be used.  
Surveillance service shall be available.

**LOSS OF RNAV 1 CAPABILITY:** Request vectoring.

**VECTORING:** Vectoring may be used for sequencing.

**RADIO COMMUNICATION FAILURE:** Squawk A7600. Proceed on STAR and make APCH to RWY 22.

DESIGNATOR	ROUTE	RESTRICTIONS	DESCEND	CLEARANCE LIMIT
<b>AMSEV 7M</b> (AMSEV SEVEN MIKE ARRIVAL)	From AMSEV to AGDES, to CN808, to CN710, to CN711, to INSAP.	Cross AGDES at or above FL100. Cross CN808 at or above 4000 FT. Cross CN710 between 3000 FT and FL100. Cross INSAP at or above 3000 FT.	As cleared by ATC.	INSAP
<b>LANTI 7M</b> (LANTI SEVEN MIKE ARRIVAL)	From LANTI to ADEGO, to CN809, to CN807, to CN806, to CN700, to CN701, to UBEDA.	Cross ADEGO at or above FL100. Cross CN809 between 4000 FT and FL150. Cross CN807 above 4000 FT. Cross CN700 between 3000 FT and FL100. Cross UBEDA at or above 3000 FT.	As cleared by ATC.	UBEDA
<b>OSVAL 7M</b> (OSVAL SEVEN MIKE ARRIVAL)	From OSVAL to INSAP.	Cross OSVAL at or above FL100. Cross INSAP at or above 3000 FT.	As cleared by ATC.	INSAP
<b>PEVEB 6M</b> (PEVEB SIX MIKE ARRIVAL)	From PEVEB to SOLSI, to CN700, to CN701, to UBEDA.	Cross SOLSI at or above FL100. Cross CN700 between 4000 FT and FL 100. Cross UBEDA at or above 3000 FT.	As cleared by ATC.	UBEDA
<b>RASVI 7M</b> (RASVI SEVEN MIKE ARRIVAL)	From RASVI to ARKEL, to CN808, to CN710, to CN711, to INSAP.	Cross ARKEL at or above FL100. Cross CN808 at or above 4000 FT. Cross CN710 between 3000 FT and FL100. Cross INSAP at or above 3000 FT.	As cleared by ATC.	INSAP
<b>TIPSO 7M</b> (TIPSO SEVEN MIKE ARRIVAL)	From TIPSO to ATNOS, to CN701, to UBEDA.	Cross ATNOS at or above FL100. Cross CN701 between 6000 FT and FL100. Cross UBEDA at or above 3000 FT.	As cleared by ATC.	UBEDA