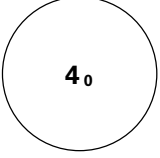
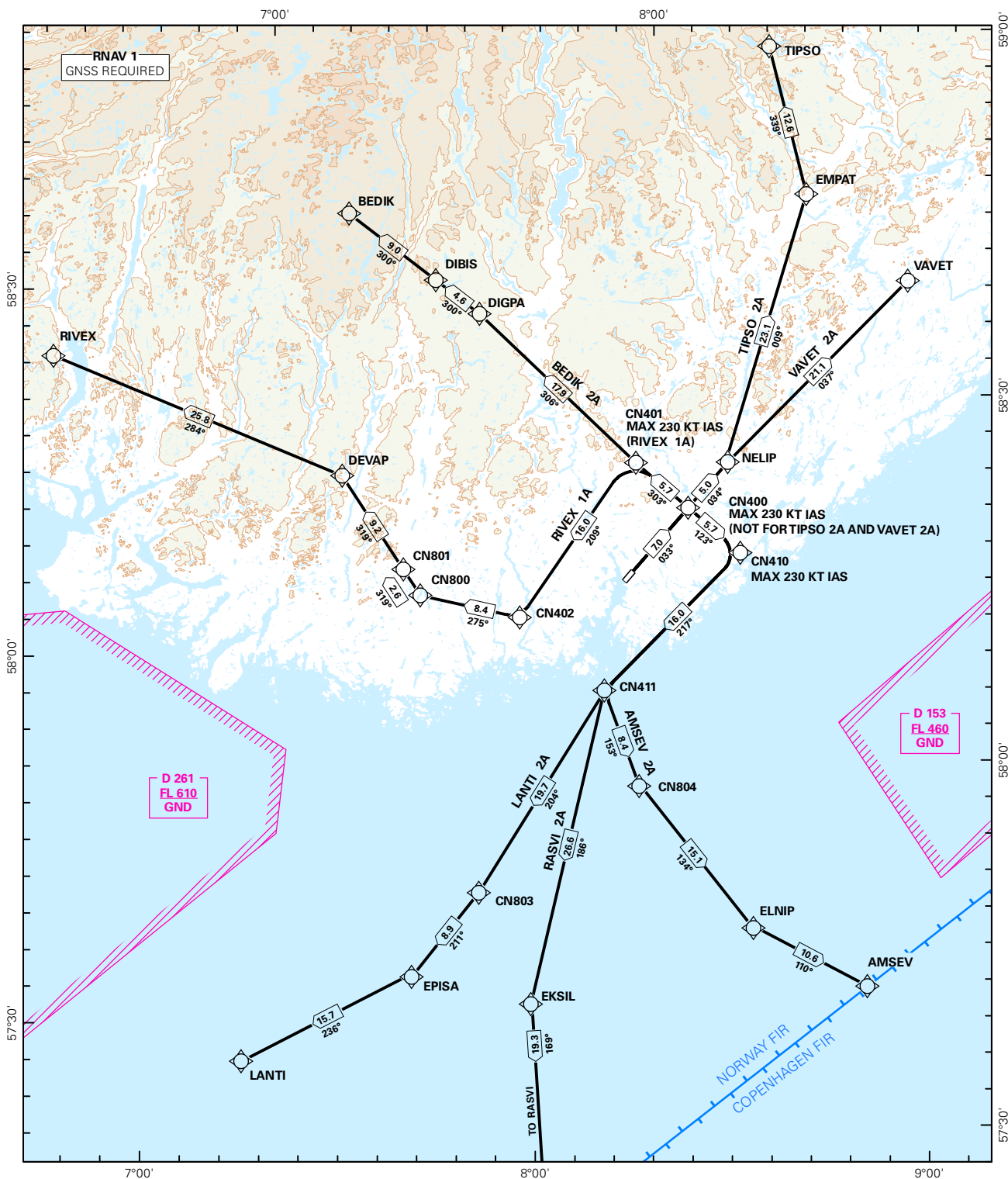


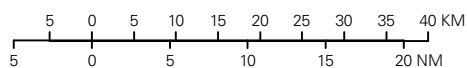
STANDARD DEPARTURE CHART INSTRUMENT (RNAV 1 SID BASED ON GNSS)

	ATIS: 124.475	ALT AND ELEV ARE IN FT DIST IN NM			KRISTIANSAND/KJEVIK
	APP: 119.950				
	TWR: 119.950 118.100 (122.100)				
	VDF: 119.950	1:900 000	VAR: 1.6 ° E (2015)	TA 7000	RWY 04
MSA 25 NM ARP	AMSEV 2A, BEDIK 2A, LANTI 2A, RASVI 2A, RIVEX 1A, TIPSO 2A, VAVET 2A				



SID DESCRIPTION OVERLEAF
DESCRIPTION OF WAYPOINTS, REF ENR 4.4

ATS AIRSPACE CLASSIFICATIONS: REF ENR 1.4
LEGEND: REF GEN 2.3



CHANGES: AMSEV 2A, BEDIK 2A, LANTI 2A, RASVI 2A, RIVEX 1A, TIPSO 2A, VAVET 2A.

**STANDARD DEPARTURE ROUTES - INSTRUMENT
(RNAV 1 SID BASED ON GNSS)**
**KRISTIANSAND/Kjevik
RWY 04**

GENERAL:	Surveillance service shall be available.
RADIO COMMUNICATION FAILURE:	Squawk A7600. Maintain last assigned LVL until passing limits as described in "CLIMB TO" table for each individual SID, then climb to CPL cruising LVL. Aircraft under vectoring shall, after set transponder to A 7600, proceed in the most direct manner possible to rejoin the CPL route no later than the next significant point, climbing to the CPL cruising LVL taking into consideration the applicable MNM flight ALT.
VECTORIZING/ DIRECT ROUTING:	When being vectored or cleared for DCT routing, the climb gradient(s) stated in SID "RESTRICTIONS"-table apply.
ATC CLEARANCE:	Departing IFR flights shall obtain ATC clearance from "KJEVIK TWR".
NON RNAV 1 ACFT:	At first contact with KJEVIK TWR state "UNABLE RNAV 1 DUE (reason)". OMNI-DIRECTIONAL DEPARTURE available (see ENCN AD 2.24).

DESIGNATOR	ROUTE	RESTRICTIONS	CLIMB TO	CONTACT
AMSEV 2A (AMSEV TWO ALFA DEPARTURE)	To CN400 on course 033°, turn right to CN410, turn right to CN411, to CN804, to ELNIP, to AMSEV.	MNM climb gradient 7.15% (435 FT/NM) to FL110 due to ATC restrictions. (For OBST reason MNM climb gradient 7.15% to 1000 FT) MAX 230 KT IAS AT CN400. MAX 230 KT IAS AT CN410. If unable to comply, inform ATC.	5000 FT RCF: If no further climb received prior to CN400, climb to CPL cruising LVL.	When instructed by KJEVIK TWR, contact KJEVIK APP 119.950 MHZ
BEDIK 2A (BEDIK TWO ALFA DEPARTURE)	To CN400 on course 033°, turn left to CN401, to DIGPA, to DIBIS, to BEDIK.	MNM climb gradient 7.15% (435 FT/NM) to FL110 due to ATC restrictions. (For OBST reason MNM climb gradient 7.15% to 1000 FT) MAX 230 KT IAS AT CN400. If unable to comply, inform ATC.	5000 FT RCF: If no further climb received prior to CN400, climb to CPL cruising LVL.	When instructed by KJEVIK TWR, contact KJEVIK APP 119.950 MHZ
LANTI 2A (LANTI TWO ALFA DEPARTURE)	To CN400 on course 033°, turn right to CN410, turn right to CN411, to CN803, to EPISA, to LANTI.	MNM climb gradient 7.15% (435 FT/NM) to FL110 due to ATC restrictions. (For OBST reason MNM climb gradient 7.15% to 1000 FT) MAX 230 KT IAS AT CN400. MAX 230 KT IAS AT CN410. If unable to comply, inform ATC.	5000 FT RCF: If no further climb received prior to CN400, climb to CPL cruising LVL.	When instructed by KJEVIK TWR, contact KJEVIK APP 119.950 MHZ
RASVI 2A (RASVI TWO ALFA DEPARTURE)	To CN400 on course 033°, turn right to CN410, turn right to CN411, to EKSIL, to RASVI.	MNM climb gradient 7.15% (435 FT/NM) to FL110 due to ATC restrictions. (For OBST reason MNM climb gradient 7.15% to 1000 FT) MAX 230 KT IAS AT CN400. MAX 230 KT IAS AT CN410. If unable to comply, inform ATC.	5000 FT RCF: If no further climb received prior to CN400, climb to CPL cruising LVL.	When instructed by KJEVIK TWR, contact KJEVIK APP 119.950 MHZ
RIVEX 1A (RIVEX ONE ALFA DEPARTURE)	To CN400 on course 033°, turn left to CN401, turn left to CN402, to CN800, to CN801, to DEVAP, to RIVEX.	MNM climb gradient 7.15% (435 FT/NM) to FL110 due to ATC restrictions. (For OBST reason MNM climb gradient 7.15% to 1000 FT) MAX 230 KT IAS AT CN400. MAX 230 KT IAS AT CN401. If unable to comply, inform ATC	5000 FT RCF: If no further climb received prior to CN400, climb to CPL cruising LVL.	When instructed by KJEVIK TWR, contact KJEVIK APP 119.950 MHZ

TIPSO 2A (TIPSO TWO ALFA DEPARTURE)	To CN400 on course 033°, to NELIP, to EMPAT, to TIPSO.	MNM climb gradient 7.15% (435 FT/NM) to FL110 due to ATC restrictions. (For OBST reason MNM climb gradient 7.15% to 1000 FT) If unable to comply, inform ATC.	5000 FT RCF: If no further climb received prior to CN400, climb to CPL cruising LVL.	When instructed by KJEVIK TWR, contact KJEVIK APP 119.950 MHZ
VAVET 2A (VAVET TWO ALFA DEPARTURE)	To CN400 on course 033°, to NELIP, to VAVET.	MNM climb gradient 7.15% (435 FT/NM) to FL110 due to ATC restrictions. (For OBST reason MNM climb gradient 7.15% to 1000 FT) If unable to comply, inform ATC.	5000 FT RCF: If no further climb received prior to CN400, climb to CPL cruising LVL.	When instructed by KJEVIK TWR, contact KJEVIK APP 119.950 MHZ