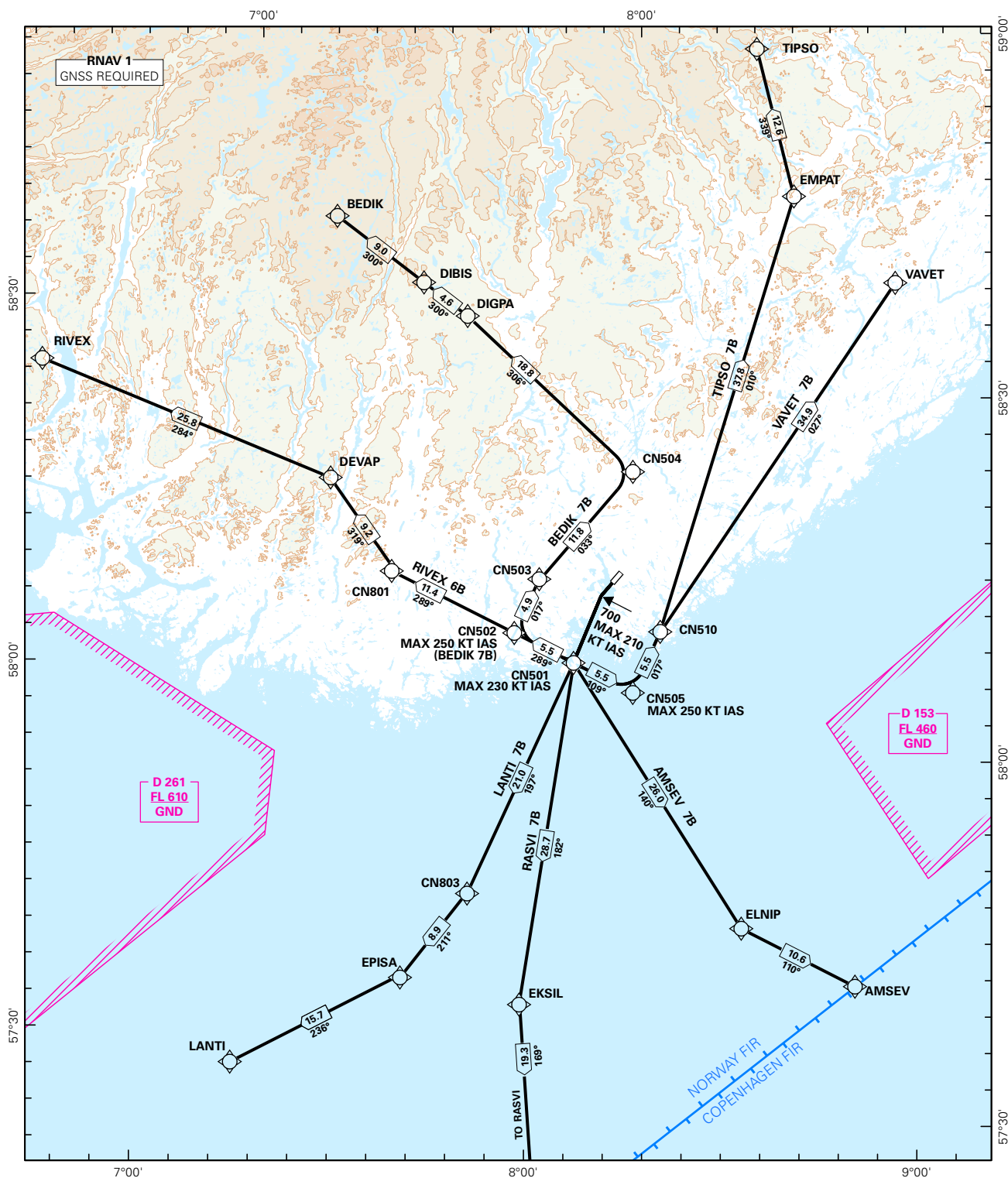


STANDARD DEPARTURE CHART INSTRUMENT (RNAV 1 SID BASED ON GNSS)

<div><div></div><div>4₀</div></div> <div>MSA 25 NM ARP</div>	ATIS: 124.475	ALT AND ELEV ARE IN FT DIST IN NM			KRISTIANSAND/KJEVIK RWY 22 NORWAY
	APP: 119.950				
	TWR: 119.950 118.100 (122.100)				
	VDF: 119.950	1:900 000	VAR: 1.6 ° E (2015)	TA 7000	
	AMSEV 7B, BEDIK 7B, LANTI 7B, RASVI 7B, RIVEX 6B, TIPSO 7B, VAVET 7B				



SID DESCRIPTION OVERLEAF
DESCRIPTION OF WAYPOINTS, REF ENR 4.4

ATS AIRSPACE CLASSIFICATIONS: REF ENR 1.4
LEGEND: REF GEN 2.3

CHANGES: AMSEV 7B, BEDIK 7B, LANTI 7B, RASVI 7B, RIVEX 6B, TIPSO 7B, VAVET 7B.

**STANDARD DEPARTURE ROUTES - INSTRUMENT
(RNAV 1 SID BASED ON GNSS)**
**KRISTIANSAND/Kjevik
RWY 22**

GENERAL:	Surveillance service shall be available.
RADIO COMMUNICATION FAILURE:	Squawk A7600. Maintain last assigned LVL until passing limits as described in "CLIMB TO" table for each individual SID, then climb to CPL cruising LVL. Aircraft under vectoring shall, after set transponder to A 7600, proceed in the most direct manner possible to rejoin the CPL route no later than the next significant point, climbing to the CPL cruising LVL taking into consideration the applicable MNM flight ALT.
VECTORIZING/ DIRECT ROUTING:	When being vectored or cleared for DCT routing, the climb gradient(s) stated in SID "RESTRICTIONS"-table apply.
ATC CLEARANCE:	Departing IFR flights shall obtain ATC clearance from "KJEVIK TWR".
NON RNAV 1 ACFT:	At first contact with KJEVIK TWR state "UNABLE RNAV 1 DUE (reason)". OMNI-DIRECTIONAL DEPARTURE available (see ENCEN AD 2.24).

DESIGNATOR	ROUTE	RESTRICTIONS	CLIMB TO	CONTACT
AMSEV 7B (AMSEV SEVEN BRAVO DEPARTURE)	Climb on course 213° to 700 FT, intercept course 194° to CN501, turn left to ELNIP, to AMSEV	MNM climb gradient 7.15% (435 FT/NM) to FL110 due to ATC restrictions. (For OBST reason MNM climb gradient 6.00% to 700 FT) MAX 210 KT IAS AT FIRST TURN. MAX 230 KT IAS AT CN501. If unable to comply, inform ATC.	5000 FT RCF: If no further climb received prior to CN501, climb to CPL cruising LVL.	When instructed by KJEVIK TWR, contact KJEVIK APP 119.950 MHZ
BEDIK 7B (BEDIK SEVEN BRAVO DEPARTURE)	Climb on course 213° to 700 FT, intercept course 194° to CN501, turn right to CN502, to CN503, to CN504, to DIGPA, to DIBIS, to BEDIK.	MNM climb gradient 7.15% (435 FT/NM) to FL110 due to ATC restrictions. (For OBST reason MNM climb gradient 6.00% to 700 FT) MAX 210 KT IAS AT FIRST TURN. MAX 230 KT IAS AT CN501. MAX 250 KT IAS AT CN502. If unable to comply, inform ATC.	5000 FT RCF: If no further climb received prior to CN501, climb to CPL cruising LVL.	When instructed by KJEVIK TWR, contact KJEVIK APP 119.950 MHZ
LANTI 7B (LANTI SEVEN BRAVO DEPARTURE)	Climb on course 213° to 700 FT, intercept course 194° to CN501, to CN803 to EPISA, to LANTI.	MNM climb gradient 7.15% (435 FT/NM) to FL 110 due to ATC restrictions. (For OBST reason MNM climb gradient 6.00% to 700 FT) MAX 210 KT IAS AT FIRST TURN. MAX 230 KT IAS AT CN501. If unable to comply, inform ATC.	5000 FT RCF: If no further climb received prior to CN501, climb to CPL cruising LVL.	When instructed by KJEVIK TWR, contact KJEVIK APP 119.950 MHZ
RASVI 7B (RASVI SEVEN BRAVO DEPARTURE)	Climb on course 213° to 700 FT, intercept course 194° to CN501, to EKSIL, to RASVI.	MNM climb gradient 7.15% (435 FT/NM) to FL 110 due to ATC restrictions. (For OBST reason MNM climb gradient 6.00% to 700 FT) MAX 210 KT IAS AT FIRST TURN. MAX 230 KT IAS AT CN501. If unable to comply, inform ATC.	5000 FT RCF: If no further climb received prior to CN501, climb to CPL cruising LVL.	When instructed by KJEVIK TWR, contact KJEVIK APP 119.950 MHZ
RIVEX 6B (RIVEX SIX BRAVO DEPARTURE)	Climb on course 213° to 700 FT, intercept course 194° to CN501, turn right to CN502, to CN801, to DEVAP, to RIVEX.	MNM climb gradient 7.15% (435 FT/NM) to FL110 due to ATC restrictions. (For OBST reason MNM climb gradient 6.00% to 700 FT) MAX 210 KT IAS AT FIRST TURN. MAX 230 KT IAS AT CN501. If unable to comply, inform ATC.	5000 FT RCF: If no further climb received prior to CN501, climb to CPL cruising LVL.	When instructed by KJEVIK TWR, contact KJEVIK APP 119.950 MHZ

TIPSO 7B (TIPSO SEVEN BRAVO DEPARTURE)	Climb on course 213° to 700 FT, intercept course 194° to CN501, turn left to CN505, turn left to CN510, to EMPAT, to TIPSO.	MNM climb gradient 7.15% (435 FT/NM) to FL110 due to ATC restrictions. (For OBST reason MNM climb gradient 6.00% to 700 FT). MAX 210 KT IAS AT FIRST TURN. MAX 230 KT IAS AT CN501. MAX 250 KT IAS AT CN505. If unable to comply, inform ATC.	5000 FT RCF: If no further climb received prior to CN501, climb to CPL cruising LVL.	When instructed by KJEVIK TWR, contact KJEVIK APP 119.950 MHZ
VAVET 7B (VAVET SEVEN BRAVO DEPARTURE)	Climb on course 213° to 700 FT, intercept course 194° to CN501, turn left to CN505, turn left to CN510, to VAVET.	MNM climb gradient 7.15% (435 FT/NM) to FL 110 due to ATC restrictions. (For OBST reason MNM climb gradient 6.00% to 700 FT). MAX 210 KT IAS AT FIRST TURN. MAX 230 KT IAS AT CN501. MAX 250 KT IAS AT CN505. If unable to comply, inform ATC.	5000 FT RCF: If no further climb received prior to CN501, climb to CPL cruising LVL.	When instructed by KJEVIK TWR, contact KJEVIK APP 119.950 MHZ