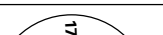
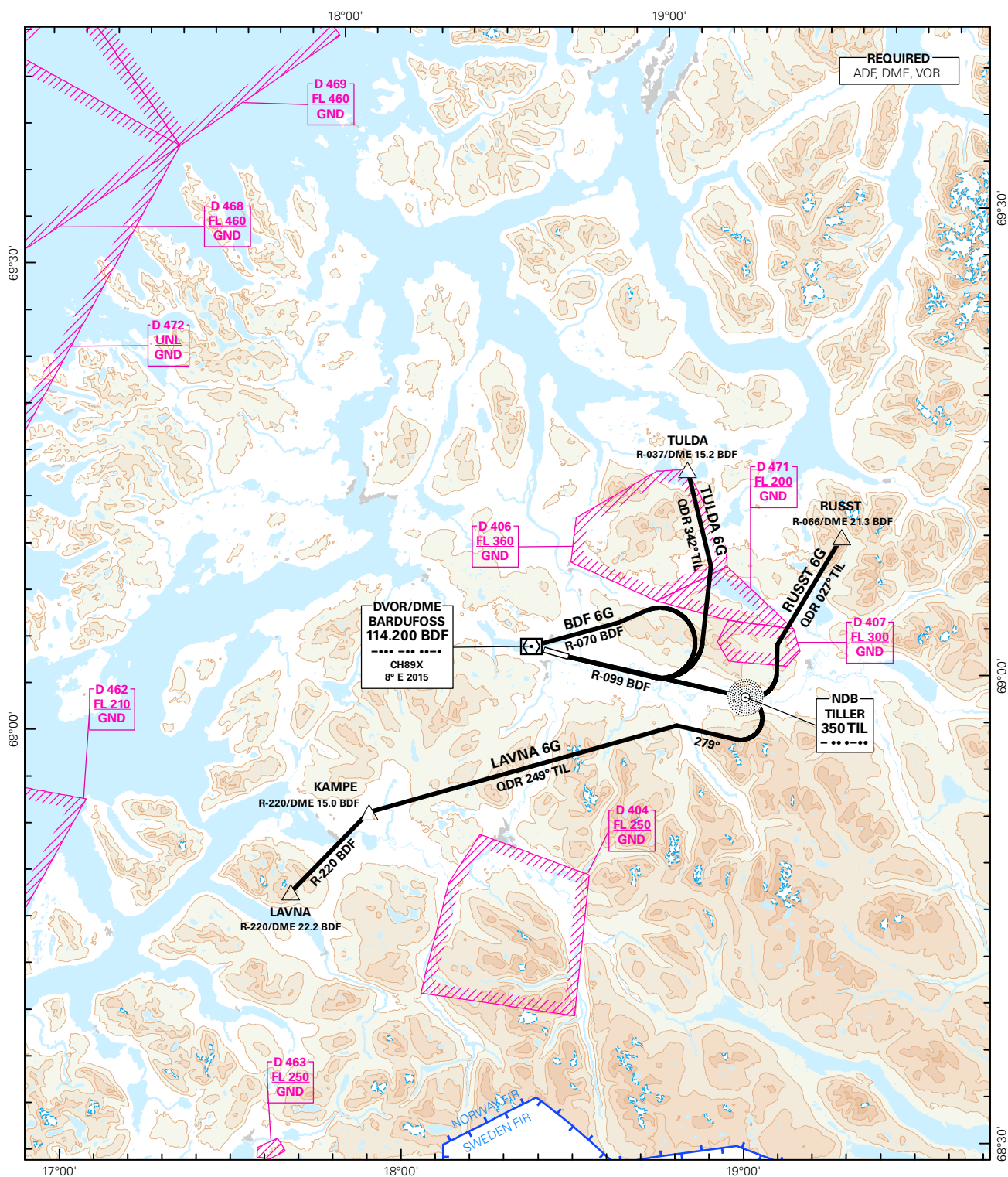


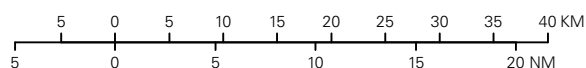
STANDARD DEPARTURE CHART INSTRUMENT - ICAO

 MSA 25 NM BDF	ATIS: 129.725		ALT AND ELEV ARE IN FT DIST IN NM		BARDUFOSS RWY 10 NORWAY
	APP: 118.800 125.850				
	TWR: 118.100 122.100				
	VDF: 118.800				
			1:700 000	VAR: 7.6 ° E (2015)	
BDF 6G, LAVNA 6G, RUSST 6G, TULDA 6G					



SID DESCRIPTION OVERLEAF
DESCRIPTION OF WAYPOINTS, REF ENR 4.4

ATS AIRSPACE CLASSIFICATIONS: REF ENR 1.4
LEGEND: REF GEN 2.3



CHANGES: COMPLETE REVISION.

STANDARD DEPARTURE ROUTES - INSTRUMENT

BARDUFOSS
RWY 10

GENERAL: Surveillance service shall be available.

RADIO COMMUNICATION FAILURE: Squawk A7600. Aircraft shall maintain last cleared and acknowledged level until passing DME 20.0 BDF, then climb to CPL cruising LVL. Aircraft under vectoring shall, after set transponder to A7600, proceed in the most direct manner possible to rejoin the CPL route no later than the next significant point, climbing to the CPL cruising LVL taking into consideration the applicable MNM flight ALT.

VECTORING/DIRECT ROUTING: When being vectored or cleared for DCT routing, the climb gradient(s) stated in SID "RESTRICTIONS"-table apply. At 6500 FT or above, clearance for direct routing will be given as soon as traffic permits

DESIGNATOR	ROUTE	RESTRICTIONS	CLIMB TO	CONTACT
BDF 6G (BARDUFOSS SIX GOLF DEPARTURE)	Climb straight ahead on R-099 BDF. At 4500 FT or TIL, whichever earlier, turn left to intercept and proceed on R-070 BDF to BDF.	MNM climb gradient 6.6% (400 FT/NM) to 4500 FT. MAX 185 KT IAS IN TURNS. If unable to comply, inform ATC.	FL 90	When instructed by BARDUFOSS TWR, contact BARDUFOSS DEPARTURE 118.800 MHZ
LAVNA 6G (LAVNA SIX GOLF DEPARTURE)	Climb straight ahead on R-099 BDF. At 5500 FT or TIL, whichever earlier, turn right to track 279°. Intercept and proceed on QDR 249 TIL to KAMPE. At KAMPE, turn left to intercept and proceed on R-220 BDF to LAVNA.	MNM climb gradient 8.1% (495 FT/NM) to 5500 FT. MAX 185 KT IAS IN TURNS. If unable to comply, inform ATC.	FL 90	When instructed by BARDUFOSS TWR, contact BARDUFOSS DEPARTURE 118.800 MHZ
RUSST 6G (RUSST SIX GOLF DEPARTURE)	Climb straight ahead on R-099 BDF to TIL. At TIL, turn left to intercept and proceed on QDR 027° TIL to RUSST.	MNM climb gradient 5.8% (335 FT/NM) to 4000 FT. MAX 185 KT IAS IN TURNS. If unable to comply, inform ATC.	FL 90	When instructed by BARDUFOSS TWR, contact BARDUFOSS DEPARTURE 118.800 MHZ
TULDA 6G (TULDA SIX GOLF DEPARTURE)	Climb straight ahead on R-099 BDF. At 4500 FT or TIL, whichever earlier, turn left to intercept and proceed on QDR 342° TIL to TULDA.	MNM climb gradient 6.6% (400 FT/NM) to 4500 FT. MAX 185 KT IAS IN TURNS. If unable to comply, inform ATC. Note: If unable to maintain 6.6% (400 FT/NM) to TIL, proceed to TIL at MNM 4000 FT (5.8% i.e. 355 FT/NM) then left turn to TULDA.	FL 90	When instructed by BARDUFOSS TWR, contact BARDUFOSS DEPARTURE 118.800 MHZ