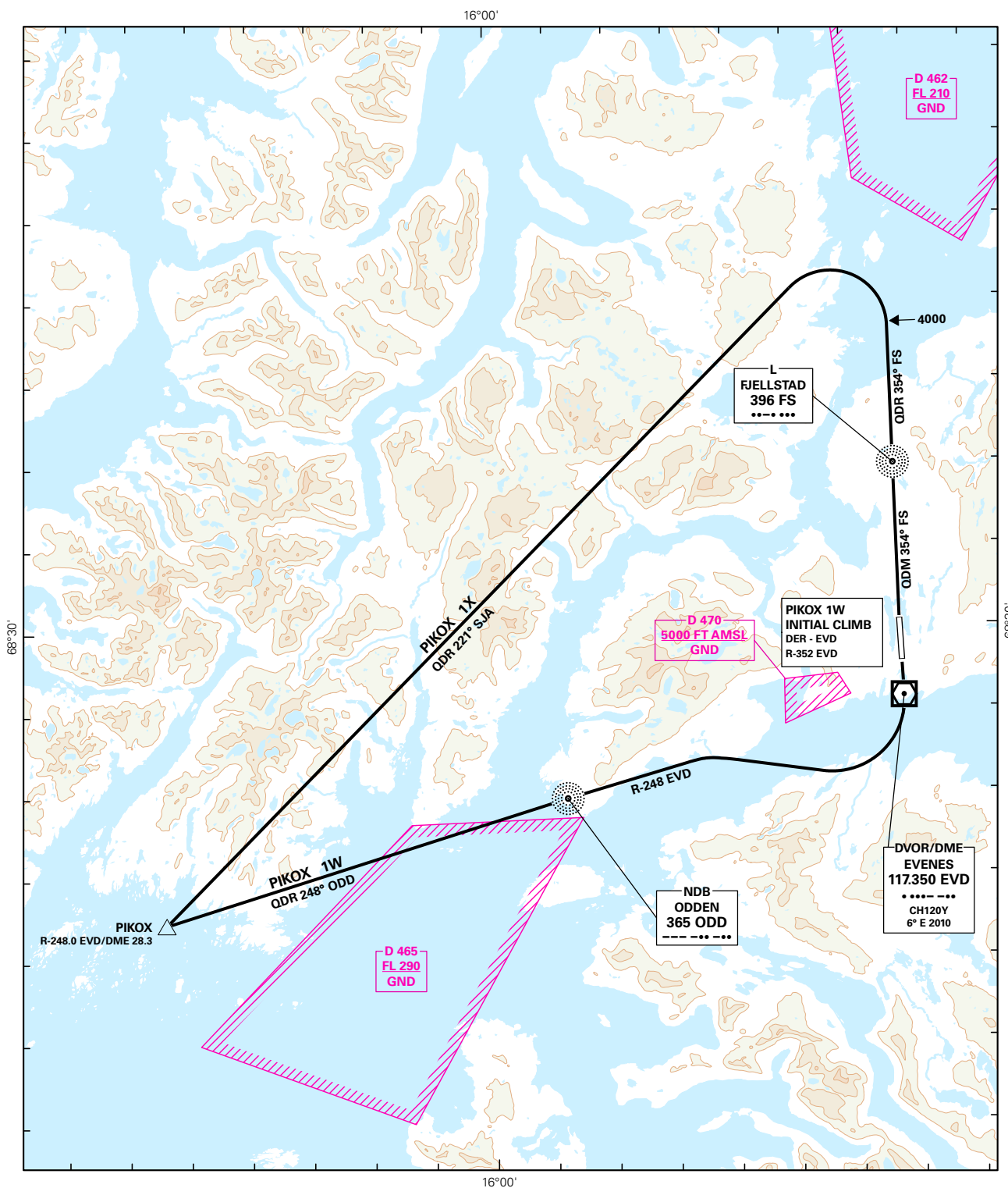
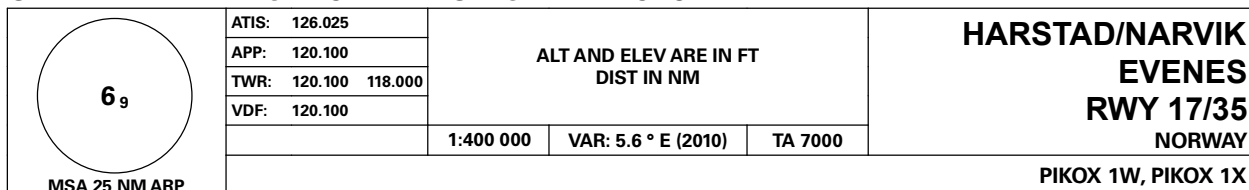
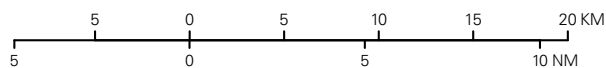


## STANDARD DEPARTURE CHART INSTRUMENT - ICAO



**SID DESCRIPTION OVERLEAF**  
**DESCRIPTION OF WAYPOINTS, REF ENR 4.4**

**ATS AIRSPACE CLASSIFICATIONS: REF ENR 1.4**  
**LEGEND: REF GEN 2.3**



**STANDARD DEPARTURE ROUTES - INSTRUMENT****HARSTAD/NARVIK/Evenes****RWY 17/35****RADIO COMMUNICATION  
FAILURE:**

Squawk A7600. Maintain last assigned LVL for 2 minutes, then climb to CPL cruising LVL. Aircraft under vectoring shall, after set transponder to A 7600, proceed in the most direct manner possible to rejoin the CPL route no later than the next significant point, climbing to the CPL LVL taking into consideration the applicable MNM flight ALT.

**VECTORING/ DIRECT  
ROUTING:**

When being vectored or cleared for DCT routing, the climb gradient(s) stated in SID "RESTRICTIONS" apply.

DESIGNATOR	ROUTE	RESTRICTIONS	CLIMB TO	CONTACT
<b>PIKOX 1W</b> (PIKOX ONE WHISKEY DEPARTURE)	Climb on R-352 to EVD. Turn right to intercept and climb on R-248 EVD/QDM 249° ODD to ODD. Proceed on QDR 248° ODD to PIKOX.	A MNM climb gradient of 6.5% (395 FT/NM) is required to EVD. From EVD, a MNM climb gradient of 4.5% (273 FT/NM) is required to 4500 FT. If unable to comply, inform ATC.	FL 90  Expect further climb from EVENES APP.	As instructed by EVENES TWR.
<b>PIKOX 1X</b> (PIKOX ONE X-RAY DEPARTURE)	Climb on QDM 354° FS to FS. Continue on QDR 354° FS to 4000 FT. Turn left to intercept and climb on QDR 221° SJA to PIKOX. If reaching 4000 FT before FS, continue to FS before turn.	A MNM climb gradient of 5.6% (340 FT/NM) is required to 1000 FT. If unable to comply, inform ATC.	FL 90  Expect further climb from EVENES APP.	As instructed by EVENES TWR.