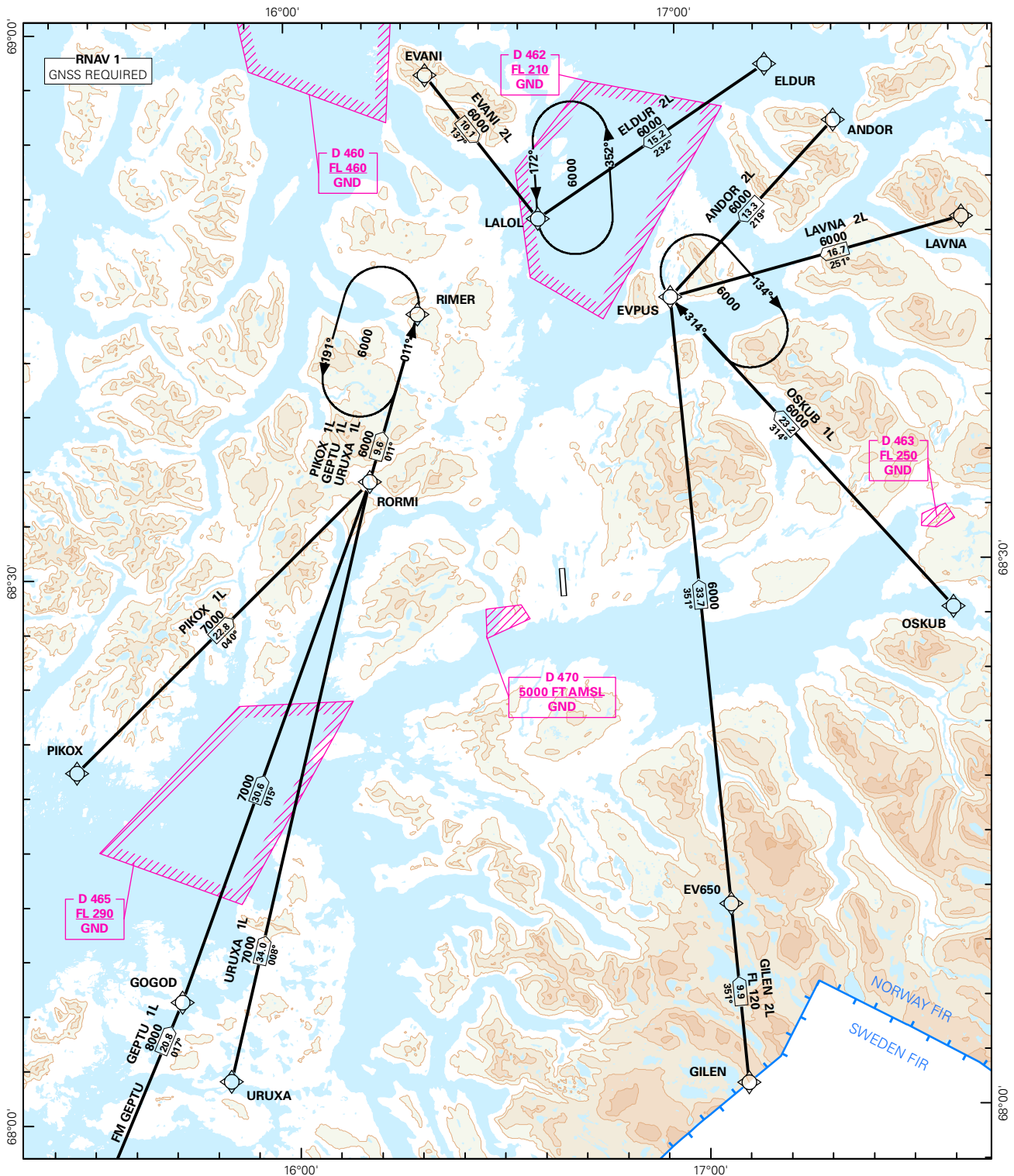


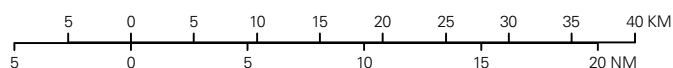
## STANDARD ARRIVAL CHART INSTRUMENT (RNAV 1 STAR BASED ON GNSS)

<div><div></div><div>6<sub>9</sub></div></div> <div>MSA 25 NM ARP</div>	ATIS: 126.025	ALT AND ELEV ARE IN FT DIST IN NM			HARSTAD/NARVIK EVENES RWY 17 NORWAY		
	APP: 120.100						
	TWR: 120.100 118.000						
	VDF: 120.100						
		1:600 000	VAR: 5.6 ° E (2010)	TA 7000			
ANDOR 2L, ELDUR 2L, EVANI 2L, GEPTU 1L, GILEN 2L, LAVNA 2L, OSKUB 1L, PIKOX 1L, URUXA 1L							



STAR DESCRIPTION OVERLEAF  
DESCRIPTION OF WAYPOINTS, REF ENR 4.4

ATS AIRSPACE CLASSIFICATIONS: REF ENR 1.4  
LEGEND: REF GEN 2.3



CHANGES: NEW PROCEDURES.

**STANDARD ARRIVAL ROUTES - INSTRUMENT  
(RNAV 1 STAR BASED ON GNSS)**
**HARSTAD/NARVIK/Evenes  
RWY 17**

**GENERAL:** Class A GNSS shall not be used.  
Surveillance service shall be available.

**LOSS OF RNAV 1 CAPABILITY:** Request vectoring.

**VECTORIZING:** When appropriate, vectoring will be used for sequencing to final.

**RADIO COMMUNICATION FAILURE:** Squawk A7600. Proceed on STAR and start APCH to RWY 17.

DESIGNATOR	ROUTE	RESTRICTIONS	DESCEND	CLEARANCE LIMIT
<b>ANDOR 2L</b> (ANDOR TWO LIMA ARRIVAL)	From ANDOR to EVPUS.	Cross ANDOR at or above 8000 FT. Cross EVPUS at or above 6000 FT.	As cleared by ATC	EVPUS HLDG
<b>ELDUR 2L</b> (ELDUR TWO LIMA ARRIVAL)	From ELDUR to LALOL.	Cross ELDUR at or above 8000 FT. Cross LALOL at or above 6000 FT.	As cleared by ATC	LALOL HLDG
<b>EVANI 2L</b> (EVANI TWO LIMA ARRIVAL)	From EVANI to LALOL.	Cross EVANI at or above 7000 FT. Cross LALOL at or above 6000 FT.	As cleared by ATC	LALOL HLDG
<b>GEPTU 1L</b> (GEPTU ONE LIMA ARRIVAL)	From GEPTU to GOGOD, to RORMI, to RIMER.	Cross GOGOD at or above 8000 FT. Cross RORMI at or above 7000 FT. Cross RIMER at or above 6000 FT.	As cleared by ATC	RIMER HLDG
<b>GILEN 2L</b> (GILEN TWO LIMA ARRIVAL)	From GILEN to EV650, to EVPUS.	Cross EV650 at or above FL 120. Cross EVPUS at or above 6000 FT.	As cleared by ATC	EVPUS HLDG
<b>LAVNA 2L</b> (LAVNA TWO LIMA ARRIVAL)	From LAVNA to EVPUS.	Cross LAVNA at or above 8000 FT. Cross EVPUS at or above 6000 FT.	As cleared by ATC	EVPUS HLDG
<b>OSKUB 1L</b> (OSKUB ONE LIMA ARRIVAL)	From OSKUB to EVPUS.	Cross OSKUB at or above FL 120. Cross EVPUS at or above 6000 FT.	As cleared by ATC	EVPUS HLDG
<b>PIKOX 1L</b> (PIKOX ONE LIMA ARRIVAL)	From PIKOX to RORMI, to RIMER.	Cross PIKOX at or above 8000 FT. Cross RORMI at or above 7000 FT. Cross RIMER at or above 6000 FT.	As cleared by ATC	RIMER HLDG
<b>URUXA 1L</b> (URUXA ONE LIMA ARRIVAL)	From URUXA to RORMI, to RIMER.	Cross URUXA at or above 8000 FT. Cross RORMI at or above 7000 FT. Cross RIMER at or above 6000 FT.	As cleared by ATC	RIMER HLDG