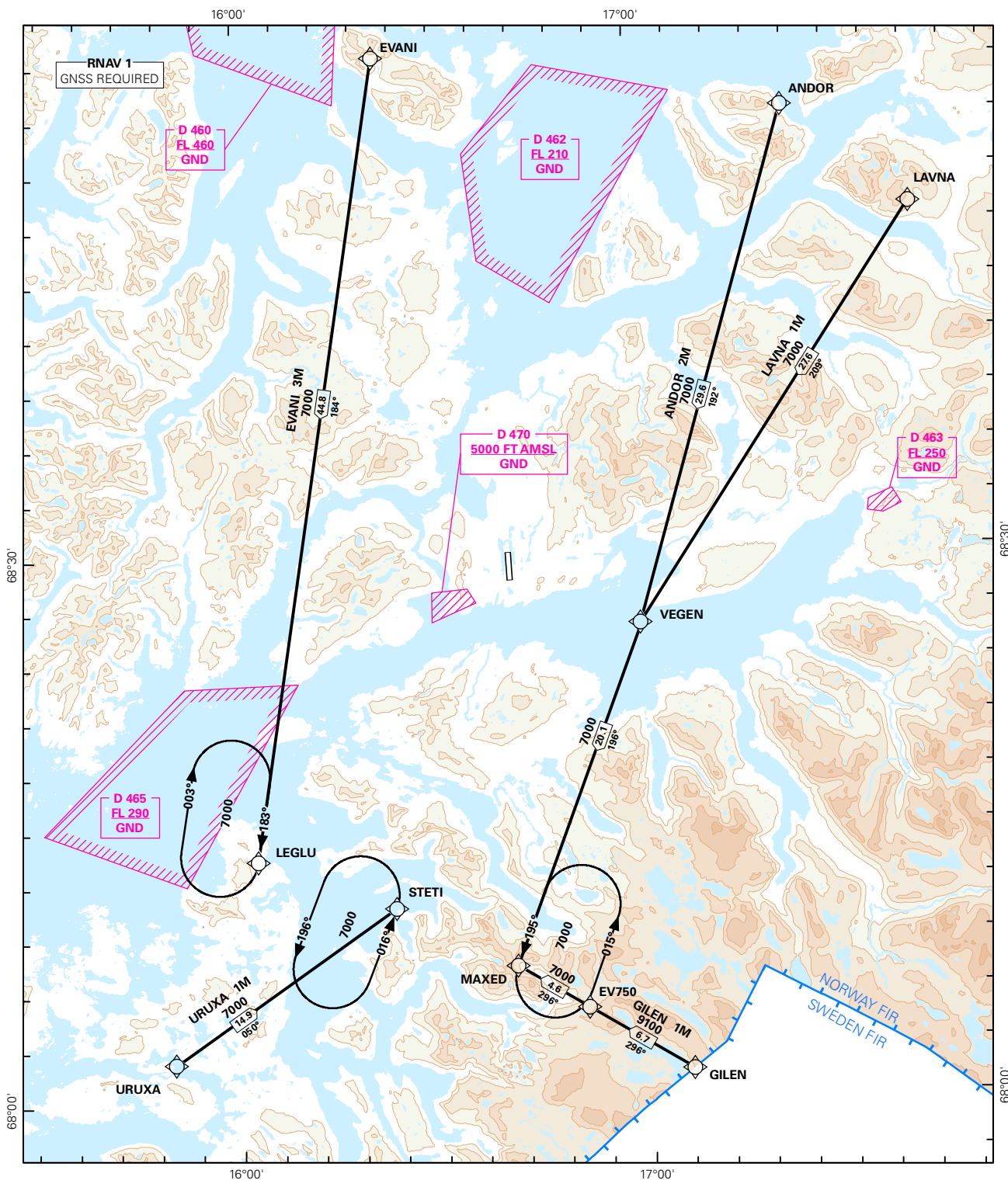


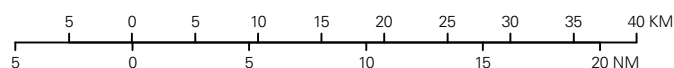
STANDARD ARRIVAL CHART INSTRUMENT (RNAV 1 STAR BASED ON GNSS)

<div><div></div><div>6₉</div></div> <div>MSA 25 NM ARP</div>	ATIS: 126.025	ALT AND ELEV ARE IN FT DIST IN NM			HARSTAD/NARVIK EVENES RWY 35 NORWAY
	APP: 120.100				
	TWR: 120.100 118.000				
	VDF: 120.100				
		1:600 000	VAR: 5.6 ° E (2010)	TA 7000	
ANDOR 2M, EVANI 3M, GILEN 1M, LAVNA 1M, URUXA 1M					



STAR DESCRIPTION OVERLEAF
DESCRIPTION OF WAYPOINTS, REF ENR 4.4

ATS AIRSPACE CLASSIFICATIONS: REF ENR 1.4
LEGEND: REF GEN 2.3



CHANGES: NEW PROCEDURES.

**STANDARD ARRIVAL ROUTES - INSTRUMENT
(RNAV 1 STAR BASED ON GNSS)**
**HARSTAD/NARVIK/Evenes
RWY 35**

GENERAL: Class A GNSS shall not be used.
Surveillance service shall be available.

LOSS OF RNAV 1 CAPABILITY: Request vectoring.

VECTORING: When appropriate, vectoring will be used for sequencing to final.

RADIO COMMUNICATION FAILURE: Squawk A7600. Proceed on STAR and start APCH to RWY 35.

DESIGNATOR	ROUTE	RESTRICTIONS	DESCEND	CLEARANCE LIMIT
ANDOR 2M (ANDOR TWO MIKE ARRIVAL)	From ANDOR to VEGEN, to MAXED.	Cross ANDOR at or above 8000 FT. Cross MAXED at or above 7000 FT.	As cleared by ATC	MAXED HLDG
EVANI 3M (EVANI THREE MIKE ARRIVAL)	From EVANI to LEGLU.	Cross LEGLU at or above 7000 FT.	As cleared by ATC	LEGLU HLDG
GILEN 1M (GILEN ONE MIKE ARRIVAL)	From GILEN to EV750, to MAXED.	Cross GILEN at or above FL 120. Cross EV750 at or above 9100 FT. Cross MAXED at or above 7000 FT.	As cleared by ATC	MAXED HLDG
LAVNA 1M (LAVNA ONE MIKE ARRIVAL)	From LAVNA to VEGEN, to MAXED.	Cross LAVNA at or above 8000 FT. Cross MAXED at or above 7000 FT.	As cleared by ATC	MAXED HLDG
URUXA 1M (URUXA ONE MIKE ARRIVAL)	From URUXA to STETI.	Cross URUXA at or above 8000 FT. Cross STETI at or above 7000 FT.	As cleared by ATC	STETI HLDG