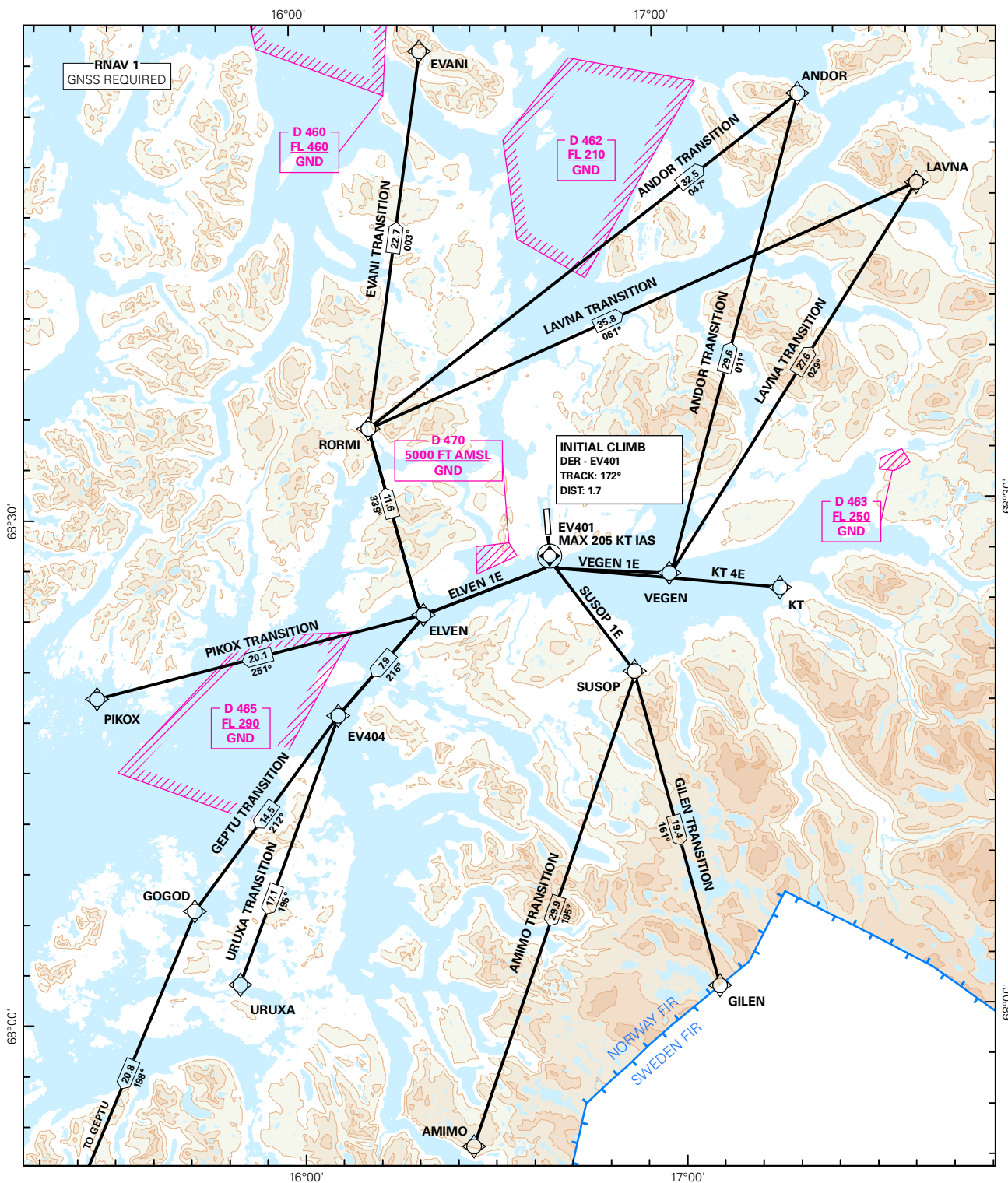


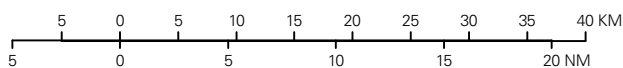
STANDARD DEPARTURE CHART INSTRUMENT (RNAV 1 SID BASED ON GNSS)

<div style="border: 1px solid black; border-radius: 50%; width: 60px; height: 60px; display: flex; align-items: center; justify-content: center; margin: 0 auto;">6₉</div> <div style="text-align: center; margin-top: 5px;">MSA 25 NM ARP</div>	ATIS: 126.025	ALT AND ELEV ARE IN FT DIST IN NM			HARSTAD/NARVIK EVENES RWY 17 NORWAY ELVEN 1E, KT 4E, SUSOP 1E, VEGEN 1E
	APP: 120.100				
	TWR: 120.100 118.000				
	VDF: 120.100				
		1:650 000	VAR: 5.6 ° E (2010)	TA 7000	



SID DESCRIPTION OVERLEAF
DESCRIPTION OF WAYPOINTS, REF ENR 4.4

ATS AIRSPACE CLASSIFICATIONS: REF ENR 1.4
LEGEND: REF GEN 2.3



CHANGES: NEW PROCEDURES.

STANDARD DEPARTURE ROUTES - INSTRUMENT HARSTAD/NARVIK/Evenes
(RNAV 1 SID BASED ON GNSS) RWY 17

GENERAL: Class A GNSS shall not be used.
Surveillance service shall be available.

RADIO COMMUNICATION FAILURE: Squawk A7600. Maintain last assigned LVL for 2 minutes, then climb to CPL cruising LVL. Aircraft under vectoring shall, after set transponder to A 7600, proceed in the most direct manner possible to rejoin the CPL route no later than the next significant point, climbing to the CPL LVL taking into consideration the applicable MNM flight ALT.

VECTORIZING/DIRECT ROUTING: When being vectored or cleared for DCT routing, the climb gradient(s) stated in SID "RESTRICTIONS" apply.

NON RNAV 1 ACFT: At first contact with EVENES TWR state "UNABLE RNAV 1".
CONVENTIONAL DEPARTURE available (see ENEV AD 2.24).

DESIGNATOR	ROUTE	RESTRICTIONS	CLIMB TO	CONTACT
ELVEN 1E (ELVEN ONE ECHO DEPARTURE)	Climb on course 172° to EV401, turn right DCT ELVEN.	A MNM climb gradient of 6.9% (420 FT/NM) to 4200 FT. If unable to comply, inform ATC. MAX 205 KT IAS during first turn.	FL 90 Expect further climb from EVENES APP.	As instructed by EVENES TWR.
KT 4E (KATNES FOUR ECHO DEPARTURE)	Climb on course 172° to EV401, turn left DCT KT.	A MNM climb gradient of 7.6% (462 FT/NM) to 3000 FT. Thereafter a MNM climb gradient of 5.4% (328 FT/NM) to 6200 FT. If unable to comply, inform ATC. MAX 205 KT IAS during first turn.	FL 90 Expect further climb from EVENES APP.	As instructed by EVENES TWR.
SUSOP 1E (SUSOP ONE ECHO DEPARTURE)	Climb on course 172° to EV401, turn left DCT SUSOP.	A MNM climb gradient of 7.6% (462 FT/NM) to 6000 FT. If unable to comply, inform ATC. MAX 205 KT IAS during first turn.	FL 120 Expect further climb from EVENES APP.	As instructed by EVENES TWR.
VEGEN 1E (VEGEN ONE ECHO DEPARTURE)	Climb on course 172° to EV401, turn left DCT VEGEN.	A MNM climb gradient of 7.6% (462 FT/NM) to 5000 FT. If unable to comply, inform ATC. MAX 205 KT IAS during first turn.	FL 90 Expect further climb from EVENES APP.	As instructed by EVENES TWR.

SID TRANSITION ROUTES

DESIGNATOR	ROUTE	RESTRICTIONS
AMIMO TRANSITION	From SUSOP to AMIMO.	A MNM climb gradient of 7.6% (462 FT/NM) to 6000 FT. If unable to comply, inform ATC.
ANDOR TRANSITION (FM ELVEN)	From ELVEN to RORMI to ANDOR.	A MNM climb gradient of 6.9% (420 FT/NM) to 4200 FT. If unable to comply, inform ATC.
ANDOR TRANSITION (FM VEGEN)	From VEGEN to ANDOR.	A MNM climb gradient of 7.6% (462 FT/NM) to 5000 FT. If unable to comply, inform ATC.
EVANI TRANSITION	From ELVEN to RORMI to EVANI.	A MNM climb gradient of 6.9% (420 FT/NM) to 4200 FT. If unable to comply, inform ATC.
GEPTU TRANSITION	From ELVEN to EV404 to GOGOD to GEPTU.	A MNM climb gradient of 6.2% (377 FT/NM) to 4200 FT. If unable to comply, inform ATC.
GILEN TRANSITION	From SUSOP to GILEN.	A MNM climb gradient of 7.6% (462 FT/NM) to 6000 FT. Thereafter a MNM climb gradient of 6.1% (371 FT/NM) to FL 120. If unable to comply, inform ATC.
LAVNA TRANSITION (FM ELVEN)	From ELVEN to RORMI to LAVNA.	A MNM climb gradient of 6.9% (420 FT/NM) to 4200 FT. If unable to comply, inform ATC.
LAVNA TRANSITION (FM VEGEN)	From VEGEN to LAVNA.	A MNM climb gradient of 7.6% (462 FT/NM) to 5000 FT. If unable to comply, inform ATC.
PIKOX TRANSITION	From ELVEN to PIKOX.	A MNM climb gradient of 6.2% (377 FT/NM) to 4200 FT. If unable to comply, inform ATC.
URUXA TRANSITION	From ELVEN to EV404 to URUXA.	A MNM climb gradient of 6.2% (377 FT/NM) to 4200 FT. If unable to comply, inform ATC.