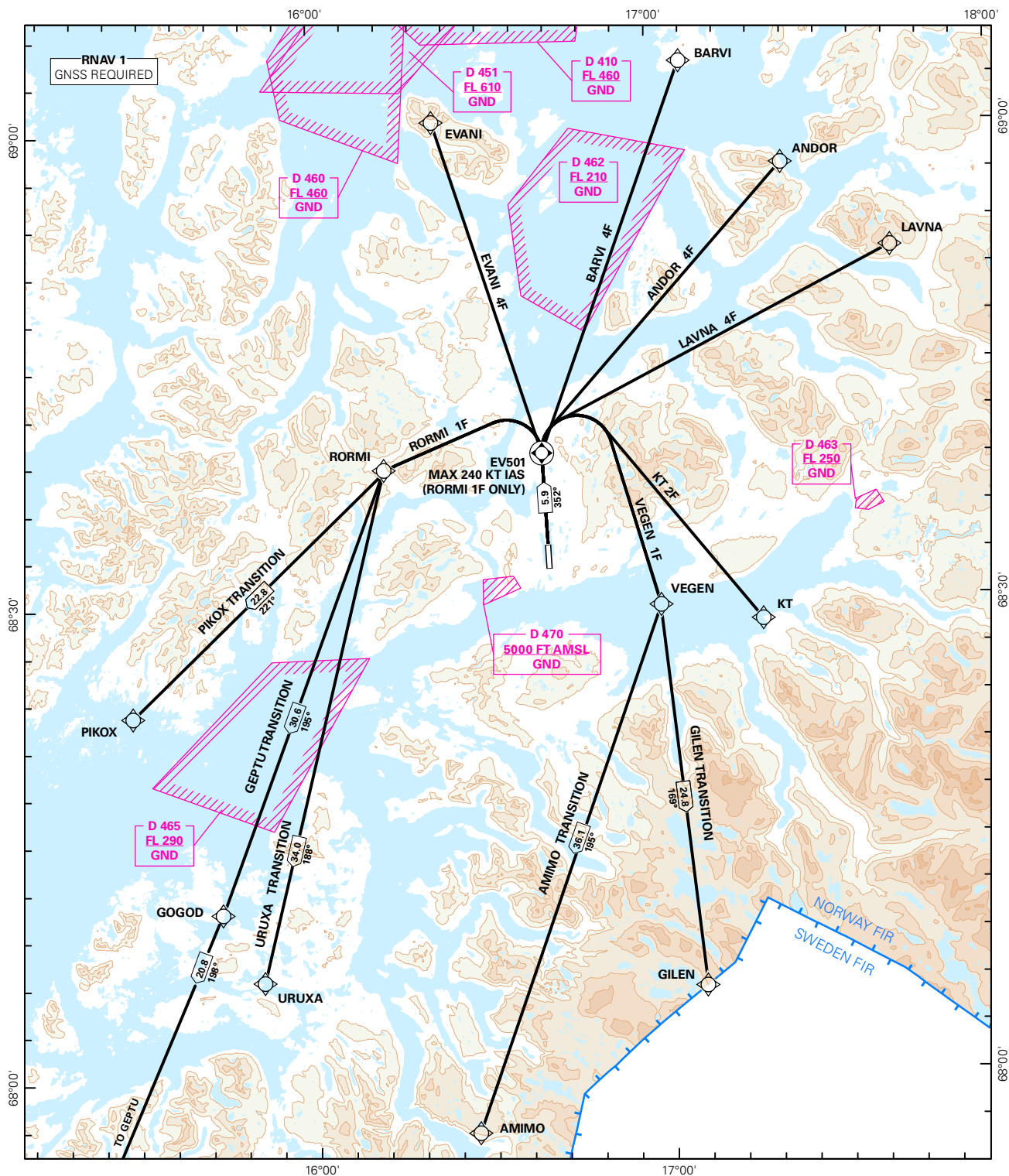


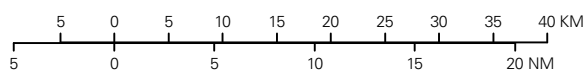
## STANDARD DEPARTURE CHART INSTRUMENT (RNAV 1 SID BASED ON GNSS)

<div style="border: 1px solid black; border-radius: 50%; width: 60px; height: 60px; display: flex; align-items: center; justify-content: center; margin: 0 auto;">6<sub>9</sub></div> <div style="text-align: center; margin-top: 5px;">MSA 25 NM ARP</div>	ATIS: 126.025	ALT AND ELEV ARE IN FT DIST IN NM			<b>HARSTAD/NARVIK EVENES RWY 35 NORWAY</b>	
	APP: 120.100					
	TWR: 120.100 118.000					
	VDF: 120.100					
		1:700 000	VAR: 5.6 ° E (2010)	TA 7000	ANDOR 4F, BARVI 4F, EVANI 4F, KT 2F, LAVNA 4F, RORMI 1F, VEGEN 1F	



SID DESCRIPTION OVERLEAF  
DESCRIPTION OF WAYPOINTS, REF ENR 4.4

ATS AIRSPACE CLASSIFICATIONS: REF ENR 1.4  
LEGEND: REF GEN 2.3



CHANGES: NEW PROCEDURES.

---

**STANDARD DEPARTURE ROUTES - INSTRUMENT HARSTAD/NARVIK/Evenes**  
**(RNAV 1 SID BASED ON GNSS) RWY 35**


---

<b>GENERAL:</b>	Class A GNSS shall not be used. Surveillance service shall be available.
<b>RADIO COMMUNICATION FAILURE:</b>	Squawk A7600. Maintain last assigned LVL for 2 minutes, then climb to CPL cruising LVL. Aircraft under vectoring shall, after set transponder to A 7600, proceed in the most direct manner possible to rejoin the CPL route no later than the next significant point, climbing to the CPL LVL taking into consideration the applicable MNM flight ALT.
<b>VECTORIZING/ DIRECT ROUTING:</b>	When being vectored or cleared for DCT routing, the climb gradient(s) stated in SID "RESTRICTIONS" apply.
<b>CLOSE-IN OBSTACLES:</b>	Close-in obstacles 150 m west of the DER. These obstacles were not considered for the published procedure design gradient, and must be avoided visually or by other means.
<b>NON RNAV 1 ACFT:</b>	At first contact with EVENES TWR state "UNABLE RNAV 1". CONVENTIONAL DEPARTURE available (see ENEV AD 2.24).

DESIGNATOR	ROUTE	RESTRICTIONS	CLIMB TO	CONTACT
<b>ANDOR 4F</b> (ANDOR FOUR FOXTROT DEPARTURE)	Climb on course 352° to EV501, turn right DCT ANDOR.	A MNM climb gradient of 6.0% (365 FT/NM) to 5000 FT. If unable to comply, inform ATC.	FL 90  Expect further climb from EVENES APP.	As instructed by EVENES TWR.
<b>BARVI 4F</b> (BARVI FOUR FOXTROT DEPARTURE)	Climb on course 352° to EV501, turn right DCT BARVI.	A MNM climb gradient of 5.3% (322 FT/NM) to 800 FT. Thereafter a MNM climb gradient of 4.5% (273 FT/NM) to 3000 FT. If unable to comply, inform ATC.	FL 90  Expect further climb from EVENES APP.	As instructed by EVENES TWR.
<b>EVANI 4F</b> (EVANI FOUR FOXTROT DEPARTURE)	Climb on course 352° to EV501, turn left DCT EVANI.	A MNM climb gradient of 5.3% (322 FT/NM) to 800 FT. Thereafter a MNM climb gradient of 4.6% (279 FT/NM) to 5000 FT. If unable to comply, inform ATC.	FL 90  Expect further climb from EVENES APP.	As instructed by EVENES TWR.
<b>KT 2F</b> (KATNES TWO FOXTROT DEPARTURE)	Climb on course 352° to EV501, turn right DCT KT.	A MNM climb gradient of 7.8% (474 FT/NM) to 4900 FT. If unable to comply, inform ATC.	FL 90  Expect further climb from EVENES APP.	As instructed by EVENES TWR.
<b>LAVNA 4F</b> (LAVNA FOUR FOXTROT DEPARTURE)	To EV501 on course 352°, turn right DCT LAVNA.	A MNM climb gradient of 6.8% (413 FT/NM) to 5000 FT. If unable to comply, inform ATC.	FL 90  Expect further climb from EVENES APP.	As instructed by EVENES TWR.
<b>RORMI 1F</b> (RORMI ONE FOXTROT DEPARTURE)	Climb on course 352° to EV501, turn left DCT RORMI.	A MNM climb gradient of 6.7% (407 FT/NM) to 4200 FT. If unable to comply, inform ATC.  MAX 240 KT IAS during first turn.	FL 90  Expect further climb from EVENES APP.	As instructed by EVENES TWR.
<b>VEGEN 1F</b> (VEGEN ONE FOXTROT DEPARTURE)	Climb on course 352° to EV501, turn right DCT VEGEN.	A MNM climb gradient of 7.8% (474 FT/NM) to 4900 FT. Thereafter a MNM climb gradient of 4.0% (243 FT/NM) to FL 120 for GILEN TRANSITION. If unable to comply, inform ATC.	FL 120  Expect further climb from EVENES APP.	As instructed by EVENES TWR.

## SID TRANSITION ROUTES

DESIGNATOR	ROUTE	RESTRICTIONS
<b>AMIMO TRANSITION</b>	From VEGEN to AMIMO.	A MNM climb gradient of 7.8% (474 FT/NM) to 4900 FT. If unable to comply, inform ATC.
<b>GEPTU TRANSITION</b>	From RORMI to GOGOD to GEPTU.	A MNM climb gradient of 6.7% (407 FT/NM) to 4200 FT. If unable to comply, inform ATC.
<b>GILEN TRANSITION</b>	From VEGEN to GILEN.	A MNM climb gradient of 4.0% (243 FT/NM) to FL 120. If unable to comply, inform ATC.
<b>PIKOX TRANSITION</b>	From RORMI to PIKOX.	A MNM climb gradient of 6.7% (407 FT/NM) to 4200 FT. If unable to comply, inform ATC.
<b>URUXA TRANSITION</b>	From RORMI to URUXA.	A MNM climb gradient of 6.7% (407 FT/NM) to 4200 FT. If unable to comply, inform ATC.