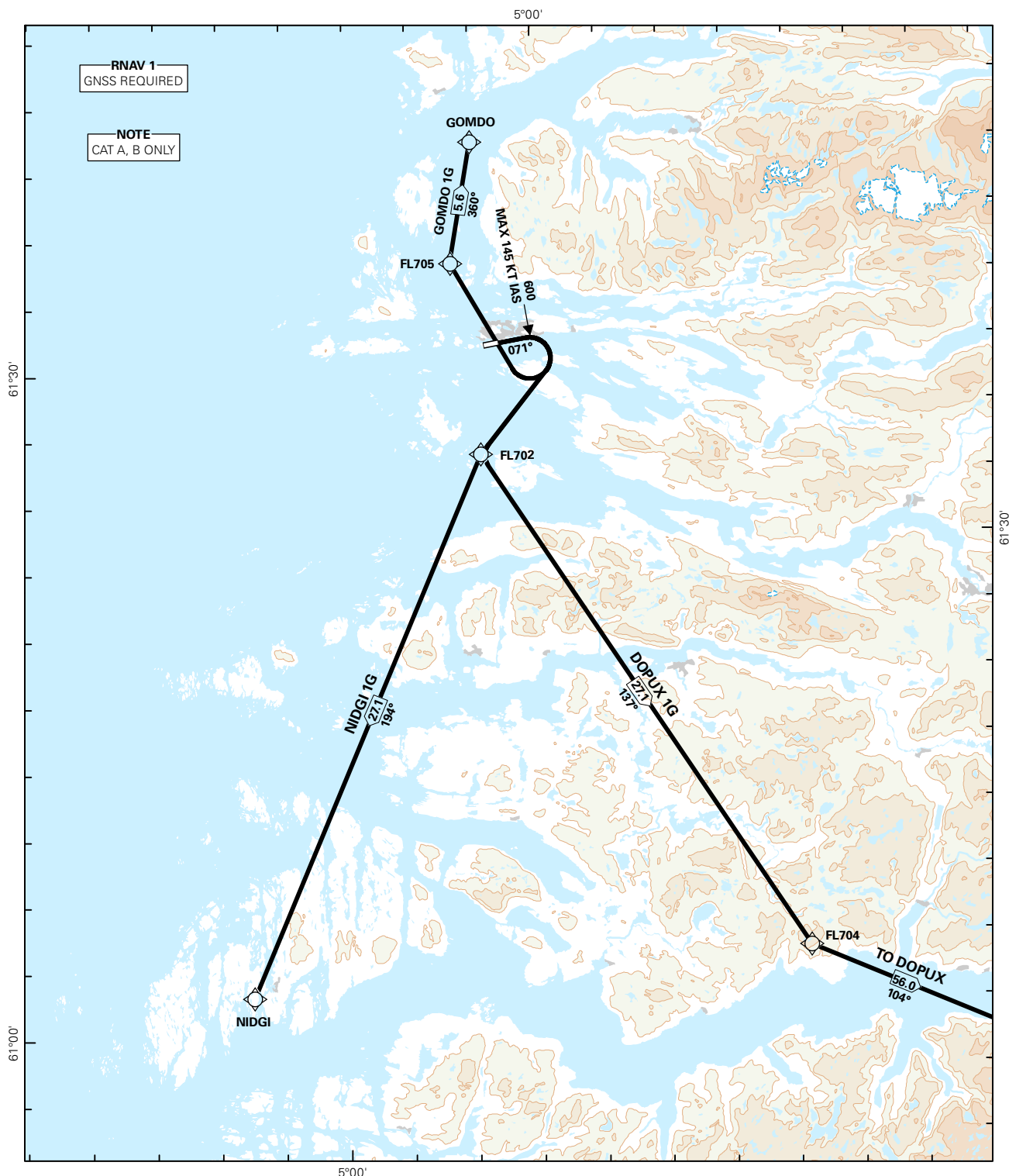


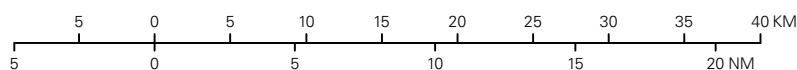
## STANDARD DEPARTURE CHART INSTRUMENT (RNAV 1 SID BASED ON GNSS)

<div><div><div>6<sub>6</sub></div></div><div>MSA 25 NM ARP</div></div>	ATIS: 124.625	ALT AND ELEV ARE IN FT DIST IN NM			FLORØ  RWY 07  NORWAY
	AFIS: 119.200				
	VDF: 119.200				
		1:500 000	VAR: 0.1 ° E (2015)	TA 6000	
	DOPUX 1G, GOMDO 1G, NIDGI 1G				



SID DESCRIPTION OVERLEAF  
DESCRIPTION OF WAYPOINTS, REF ENR 4.4

ATS AIRSPACE CLASSIFICATIONS: REF ENR 1.4  
LEGEND: REF GEN 2.3



CHANGES: ATIS FREQUENCY.

**STANDARD DEPARTURE ROUTES - INSTRUMENT  
(RNAV 1 SID BASED ON GNSS)**
**FLORØ  
RWY 07**

<b>REMARKS:</b>	CAT A, B only
<b>GENERAL:</b>	Class A GNSS shall not be used.
<b>RADIO COMMUNICATION FAILURE:</b>	Squawk A7600. Maintain last assigned LVL for 2 minutes, then climb to CPL cruising LVL. Aircraft under vectoring shall, after set transponder to A 7600, proceed in the most direct manner possible to rejoin the CPL route no later than the next significant point, climbing to the CPL cruising LVL taking into consideration the applicable MNM flight ALT.
<b>CLOSE-IN OBSTACLES:</b>	Rising terrain close to THR 25 requires more than 7.6 % climb gradient and must be avoided visually or by other means.
<b>ATC CLEARANCE:</b>	Departing IFR flights shall obtain ATC clearance from FLORØ INFORMATION.
<b>NON RNAV 1 ACFT:</b>	At first contact with FLORØ INFORMATION state "UNABLE RNAV 1 DUE (reason)". CONVENTIONAL DEPARTURE available (see ENFL AD 2.24)

DESIGNATOR	ROUTE	RESTRICTIONS	CLIMB TO	CONTACT
<b>DOPUX 1G</b> (DOPUX ONE GOLF DEPARTURE)	Climb on course 071° to 600 FT, turn right DCT FL702, to FL704, to DOPUX.	MNM climb gradient 7.6% to (462 FT/NM) to 1500 FT, then MNM climb gradient 5.6% to (353 FT/NM) to 5000 FT to stay within airspace with two-way radio communication requirements and/or due to ATC restrictions. (For OBST reason MNM climb gradient 7.6% (462 FT/NM) to 1500 FT)  MAX 145 KT IAS at turn at 600 FT.  If unable to comply, inform ATS.	FL 100	As instructed by FLORØ INFORMATION
<b>GOMDO 1G</b> (GOMDO ONE GOLF DEPARTURE)	Climb on course 071° to 600 FT, turn right DCT FL705, to GOMDO.	MNM climb gradient 9,0 % to (547 FT/NM) to 5000 FT, to stay within airspace with two-way radio communication requirements and/or due to ATC restrictions. (For OBST reason MNM climb gradient 7.6% (462 FT/NM) to 1100 FT)  MAX 145 KT IAS at turn at 600 FT.  If unable to comply, inform ATS.	FL 100	As instructed by FLORØ INFORMATION
<b>NIDGI 1G</b> (NIDGI ONE GOLF DEPARTURE)	Climb on course 071° to 600 FT, turn right DCT FL702, to NIDGI.	MNM climb gradient 7.6% to (462 FT/NM) to 1100 FT, then MNM climb gradient 5.6% to (353 FT/NM) to 5000 FT to stay within airspace with two-way radio communication requirements and/or due to ATC restrictions. (For OBST reason MNM climb gradient 7.6% (462 FT/NM) to 1100 FT)  MAX 145 KT IAS at turn at 600 FT.  If unable to comply, inform ATS.	FL 100	As instructed by FLORØ INFORMATION