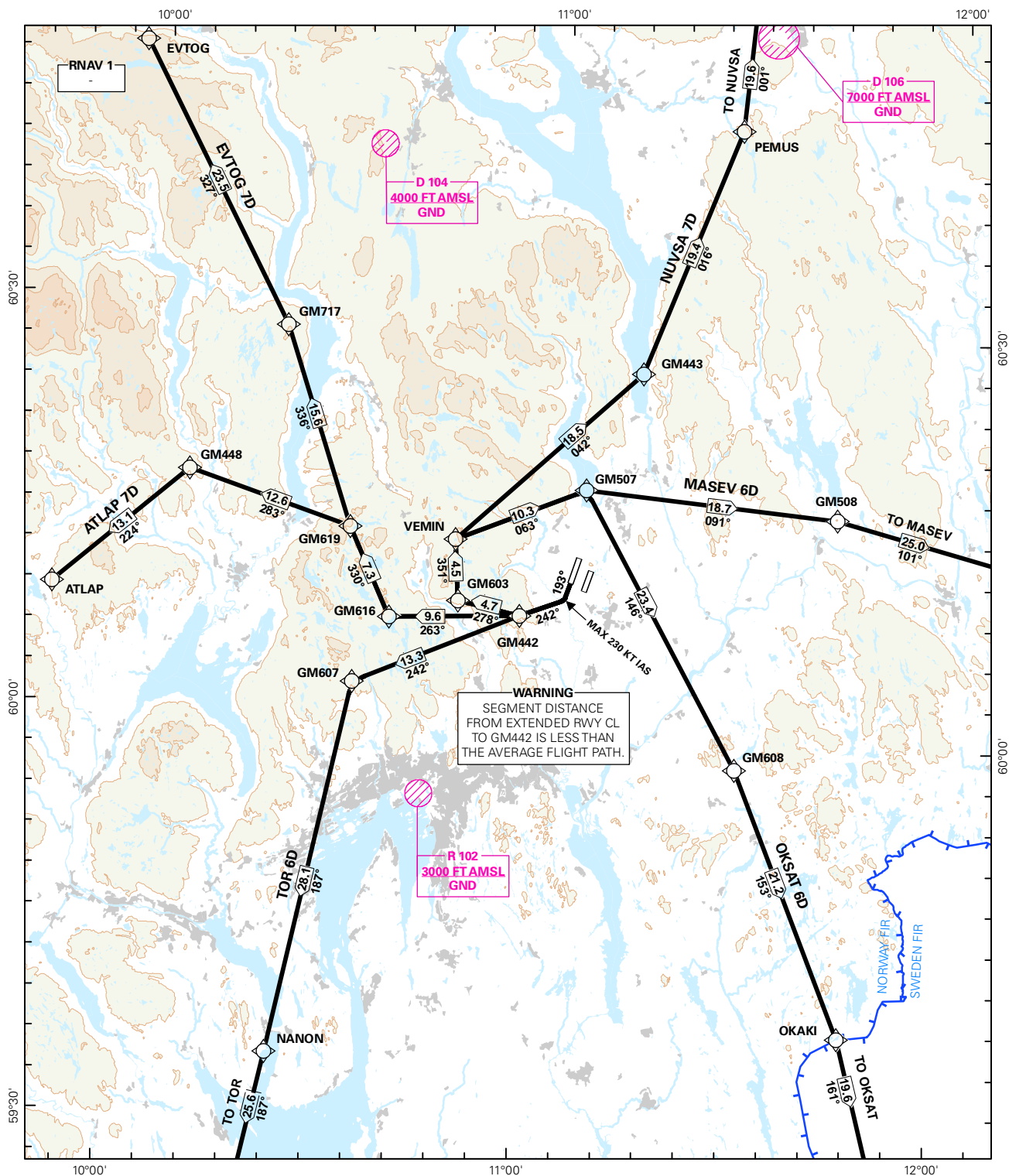


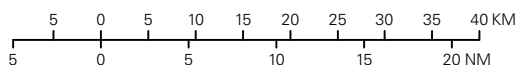
## STANDARD DEPARTURE CHART INSTRUMENT (RNAV 1 SID BASED ON GNSS OR DME/DME)

<div style="border: 1px solid black; border-radius: 50%; width: 60px; height: 60px; display: flex; align-items: center; justify-content: center; margin: 0 auto;"> <div style="font-size: 24px; font-weight: bold;">3<sub>9</sub></div> </div> <div style="text-align: center; font-size: 8px; margin-top: 5px;">MSA 25 NM ARP</div>	ATIS: 127.150	ALT AND ELEV ARE IN FT DIST IN NM			<b>GARDERMOEN</b>  <b>RWY 19R</b>  NORWAY
	APP: 120.450				
	TWR: 118.300 (118.700)				
	GND: 121.600 (121.900)				
		1:800 000	VAR: 2.8 ° E (2015)	TA 7000	
ATLAP 7D, EVTOG 7D, MASEV 6D, NUVSA 7D, OKSAT 6D, TOR 6D					



SID DESCRIPTION OVERLEAF  
DESCRIPTION OF WAYPOINTS, REF ENR 4.4

ATS AIRSPACE CLASSIFICATIONS: REF ENR 1.4  
LEGEND: REF GEN 2.3



CHANGES: D103, D154 WITHDRAWN.

**STANDARD DEPARTURE ROUTES - INSTRUMENT  
(RNAV 1 SID BASED ON GNSS OR DME/DME)**
**OSLO/Gardermoen  
RWY 19R**
**GENERAL:**

Class A GNSS shall not be used.  
Radar service shall be available.  
Maximum speed below FL100: 250 KT IAS unless otherwise stated under RESTRICTIONS, or instructed by ATC.

Due to simultaneous parallel departures, change to APP frequency shall always be initiated by GARDERMOEN TWR.

**RADIO  
COMMUNICATION  
FAILURE:**

SQUAWK A7600.  
In case of RCF after take-off, maintain last assigned level for 2 minutes, then climb to the cruising level stated in the CPL. ACFT under vectoring shall, after setting their transponder to A7600, continue on last cleared and acknowledged heading and level for 2 minutes, then proceed via the most direct route to join the cleared SID or route and climb to the cruising level stated in CPL.

**ATC CLEARANCE:**

Departing IFR flights shall contact "GARDERMOEN DELIVERY" to obtain ATC clearance. Specify stand number. Request for ATC clearance may take place at the earliest 30 minutes and at the latest 10 minutes prior to anticipated engine start-up. Listening watch shall thereafter be maintained on "GARDERMOEN DELIVERY".

**NON RNAV 1 ACFT:**

At first contact with "GARDERMOEN DELIVERY" state "UNABLE RNAV 1".  
OMNI-DIRECTIONAL DEPARTURE available (see ENGM AD 2.24).

**NOTE**

The segment distances from GM616 to GM619, from GM619 to GM448, GM442 to GM603 and from GM603 to VEMIN are based on average flight path criteria.

DESIGNATOR	ROUTE	RESTRICTIONS	CLIMB TO	CONTACT
<b>ATLAP 7D</b> (ATLAP SEVEN DELTA DEPARTURE)	Climb on RWY track 193°. Intercept and proceed on course 242° to GM442, to GM616, to GM619, to GM448, to ATLAP.	A MNM climb gradient of 6.6% i.e. 401 FT/NM is required until 5000 FT. If unable to comply, inform ATC.  MAX speed 230 KT IAS during first turn.	7000 FT  Expect further climb from OSLO APP	When instructed by GARDERMOEN TWR contact OSLO APP 120.450 MHZ
<b>EVT OG 7D</b> (EVT OG SEVEN DELTA DEPARTURE)	Climb on RWY track 193°. Intercept and proceed on course 242° to GM442, to GM616, to GM619, to GM717, to EVT OG.	A MNM climb gradient of 6.6% i.e. 401 FT/NM is required until 5000 FT. If unable to comply, inform ATC.  MAX speed 230 KT IAS during first turn.	7000 FT  Expect further climb from OSLO APP	When instructed by GARDERMOEN TWR contact OSLO APP 120.450 MHZ
<b>MASEV 6D</b> (MASEV SIX DELTA DEPARTURE)	Climb on RWY track 193°. Intercept and proceed on course 242° to GM442, to GM603, to VEMIN, to GM507, to GM508, to MASEV.	A MNM climb gradient of 6.6% i.e. 401 FT/NM is required until 5000 FT. If unable to comply, inform ATC.  MAX speed 230 KT IAS during first turn.	7000 FT  Expect further climb from OSLO APP	When instructed by GARDERMOEN TWR contact OSLO APP 120.450 MHZ
<b>NUVSA 7D</b> (NUVSA SEVEN DELTA DEPARTURE)	Climb on RWY track 193°. Intercept and proceed on course 242° to GM442, to GM603, to VEMIN, to GM443, to PEMUS, to NUVSA.	A MNM climb gradient of 6.6% i.e. 401 FT/NM is required until 5000 FT. If unable to comply, inform ATC.  MAX speed 230 KT IAS during first turn.	7000 FT  Expect further climb from OSLO APP	When instructed by GARDERMOEN TWR contact OSLO APP 120.450 MHZ
<b>OKSAT 6D</b> (OKSAT SIX DELTA DEPARTURE)	Climb on RWY track 193°. Intercept and proceed on course 242° to GM442, to GM603, to VEMIN, to GM507, to GM608, to OKAKI, to OKSAT.	A MNM climb gradient of 6.6% i.e. 401 FT/NM is required until 5000 FT. If unable to comply, inform ATC.  MAX speed 230 KT IAS during first turn.	7000 FT  Expect further climb from OSLO APP	When instructed by GARDERMOEN TWR contact OSLO APP 120.450 MHZ

<b>TOR 6D</b> (TORP SIX DELTA DEPARTURE)	Climb on RWY track 193°. Intercept and proceed on course 242° to GM442, to GM607, to NANON, to TOR.	A MNM climb gradient of 6.6% i.e. 401 FT/NM is required until 5000 FT. If unable to comply, inform ATC.  MAX speed 230 KT IAS during first turn.	7000 FT  Expect further climb from OSLO APP	When instructed by GARDERMOEN TWR contact OSLO APP 120.450 MHZ
---	---	--	---	--