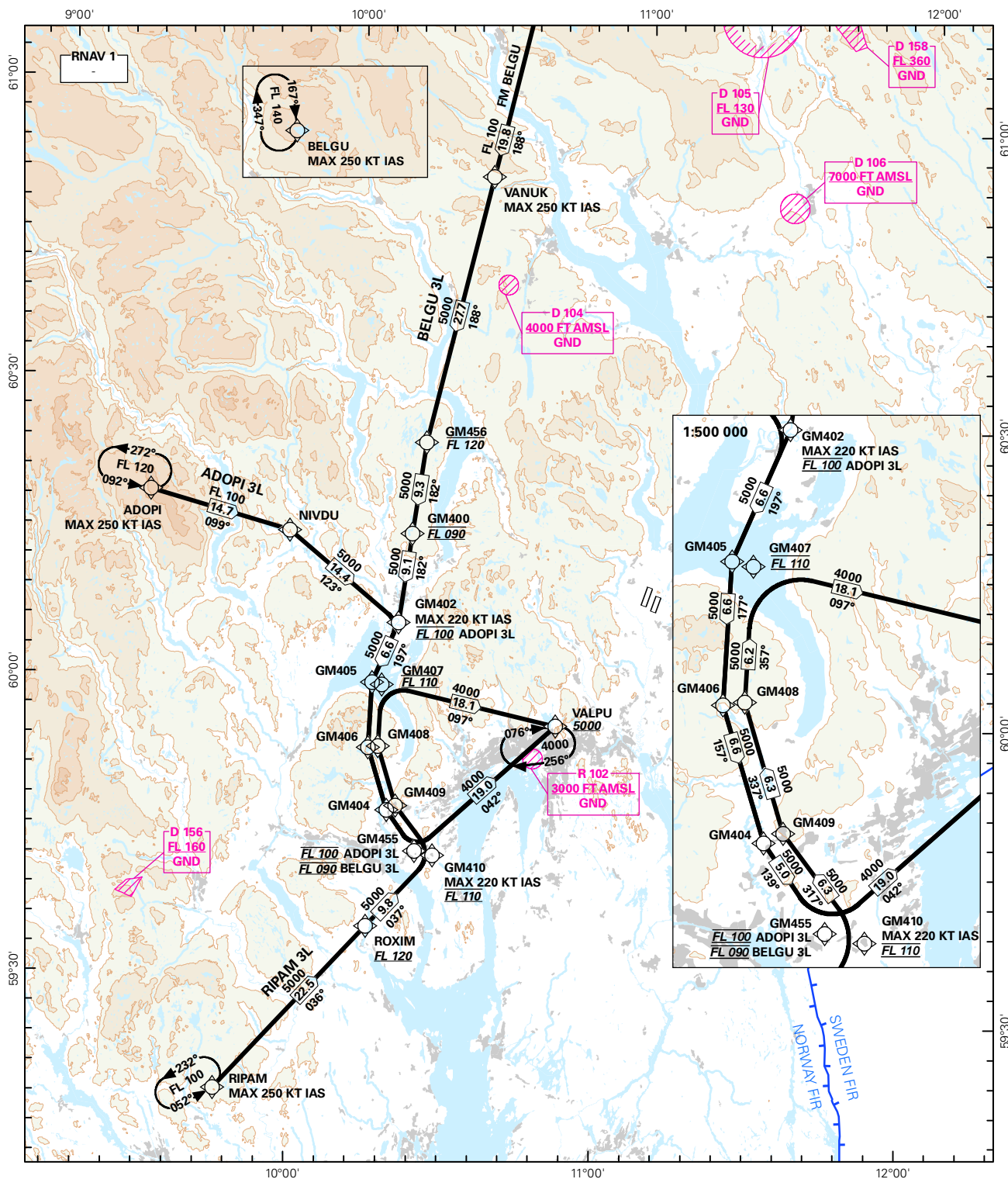


STANDARD ARRIVAL CHART INSTRUMENT (RNAV 1 STAR BASED ON GNSS OR DME/DME)

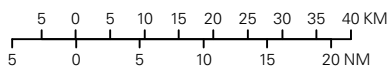
<div style="border: 1px solid black; border-radius: 50%; width: 60px; height: 60px; display: flex; align-items: center; justify-content: center; margin: 0 auto;"> <div style="font-size: 24px; font-weight: bold;">3₉</div> </div> <div style="text-align: center; font-size: 8px; margin-top: 5px;">MSA 25 NM ARP</div>	ATIS: 126.125	ALT AND ELEV ARE IN FT DIST IN NM			OSLO/GARDERMOEN RWY 01L/R W
	APP: 120.450				
	DIR: 136.400				
	FIN: 128.900				
	TWR: 118.300 120.100	1:1 100 000	VAR: 2.8° E (2015)	TA 7000	NORWAY

ADOPI 3L, BELGU 3L, RIPAM 3L




STAR DESCRIPTION OVERLEAF
DESCRIPTION OF WAYPOINTS, REF ENR 4.4

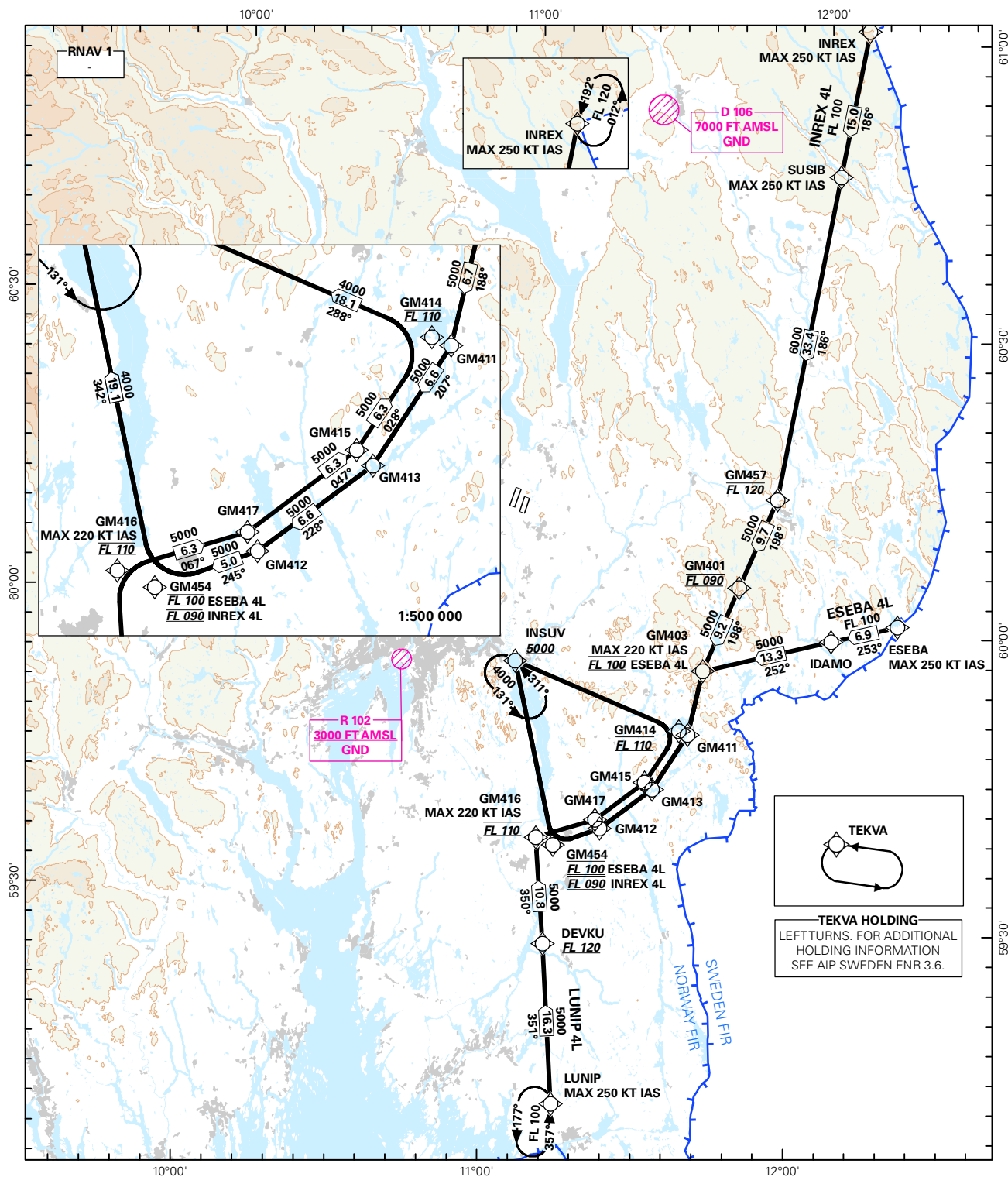
ATS AIRSPACE CLASSIFICATIONS: REF ENR 1.4
LEGEND: REF GEN 2.3



CHANGES: D103, D154 WITHDRAWN.

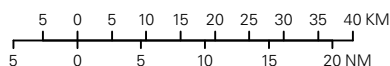
STANDARD ARRIVAL CHART INSTRUMENT - ICAO (RNAV 1 STAR BASED ON GNSS OR DME/DME)

	ATIS: 126.125	ALT AND ELEV ARE IN FT DIST IN NM			OSLO/GARDERMOEN RWY 01L/R E NORWAY
	APP: 118.475				
	DIR: 136.400				
	FIN: 128.900				
	VDF: 118.300 120.100	1:1 100 000	VAR: 2.8 ° E (2015)	TA 7000	
MSA 25 NM ARP	ESEBA 4L, INREX 4L, LUNIP 4L				



STAR DESCRIPTION OVERLEAF
DESCRIPTION OF WAYPOINTS, REF ENR 4.4

ATS AIRSPACE CLASSIFICATIONS: REF ENR 1.4
LEGEND: REF GEN 2.3



**STANDARD ARRIVAL ROUTES - INSTRUMENT
(RNAV 1 STAR BASED ON GNSS OR DME/DME)**
**OSLO/Gardermoen
RWY 01L/R**

GENERAL: Class A GNSS shall not be used.
Radar service shall be available.
Maximum speed 250 KT IAS unless otherwise stated under RESTRICTIONS, or instructed by ATC.

ESEBA STAR: TEKVA holding (left turn) is associated with ESEBA STAR. TEKVA holding is published in AIP Sweden ENR 3.6

CONTINGENCY PROC: Loss of RNAV capability: Request vectoring.

VECTORIZING: Vectoring may be used when necessary.

RADIO COMMUNICATION FAILURE: Squawk A7600.
Follow cleared or expected STAR until IAF, then start approach to assigned runway without delay. If no specific runway for landing has been assigned, start approach to runway 01R without delay.

DESIGNATOR	ROUTE	RESTRICTIONS	DESCEND	CLEARANCE LIMIT
ADOPI 3L (ADOPI THREE LIMA ARRIVAL)	From ADOPI to NIVDU, to GM402, to GM405, to GM406, to GM404, to GM455, turn left to VALPU	Cross ADOPI at 250 KT IAS or less. Cross GM402 at FL100, speed 220 KT IAS or less. Cross GM455 at FL100. Cross VALPU at 5000 FT or above.	As cleared by ATC	VALPU HLDG
BELGU 3L (BELGU THREE LIMA ARRIVAL)	From BELGU to VANUK, to GM456, to GM400, to GM402, to GM405, to GM406, to GM404, to GM455, turn left to VALPU	Cross BELGU at 250 KT IAS or less. Cross VANUK at 250 KT IAS or less. Cross GM456 at or below FL120. Cross GM400 at FL090. Cross GM402 at 220 KT IAS or less. Cross GM455 at FL090. Cross VALPU at 5000 FT or above.	As cleared by ATC	VALPU HLDG
ESEBA 4L (ESEBA FOUR LIMA ARRIVAL)	From ESEBA to IDAMO, to GM403, to GM411, to GM413, to GM412, to GM454, turn right to INSUV	Cross ESEBA at 250 KT IAS or less. Cross GM403 at FL100, speed 220 KT IAS or less. Cross GM454 at FL100. Cross INSUV at 5000 FT or above. Note: See information pertaining to TEKVA holding above.	As cleared by ATC	INSUV HLDG
INREX 4L (INREX FOUR LIMA ARRIVAL)	From INREX to SUSIB, to GM457, to GM401, to GM403, to GM411, to GM413, to GM412, to GM454, turn right to INSUV	Cross INREX at 250 KT IAS or less. Cross SUSIB at 250 KT IAS or less. Cross GM457 at or below FL120. Cross GM401 at FL090. Cross GM403 at speed 220 KT IAS or less. Cross GM454 at FL090. Cross INSUV at 5000 FT or above.	As cleared by ATC	INSUV HLDG
LUNIP 4L (LUNIP FOUR LIMA ARRIVAL)	From LUNIP to DEVKU, to GM416, to GM417, to GM415, to GM414, turn left to INSUV	Cross LUNIP at 250 KT IAS or less. Cross DEVKU at or above FL120. Cross GM416 at FL110, speed 220 KT IAS or less. Cross GM414 at FL110. Cross INSUV at 5000 FT or above.	As cleared by ATC	INSUV HLDG
RIPAM 3L (RIPAM THREE LIMA ARRIVAL)	From RIPAM to ROXIM, to GM410, to GM409, to GM408, to GM407, turn right to VALPU	Cross RIPAM at 250 KT IAS or less. Cross ROXIM at or above FL120. Cross GM410 at FL110, speed 220 KT IAS or less. Cross GM407 at FL110. Cross VALPU at 5000 FT or above.	As cleared by ATC	VALPU HLDG