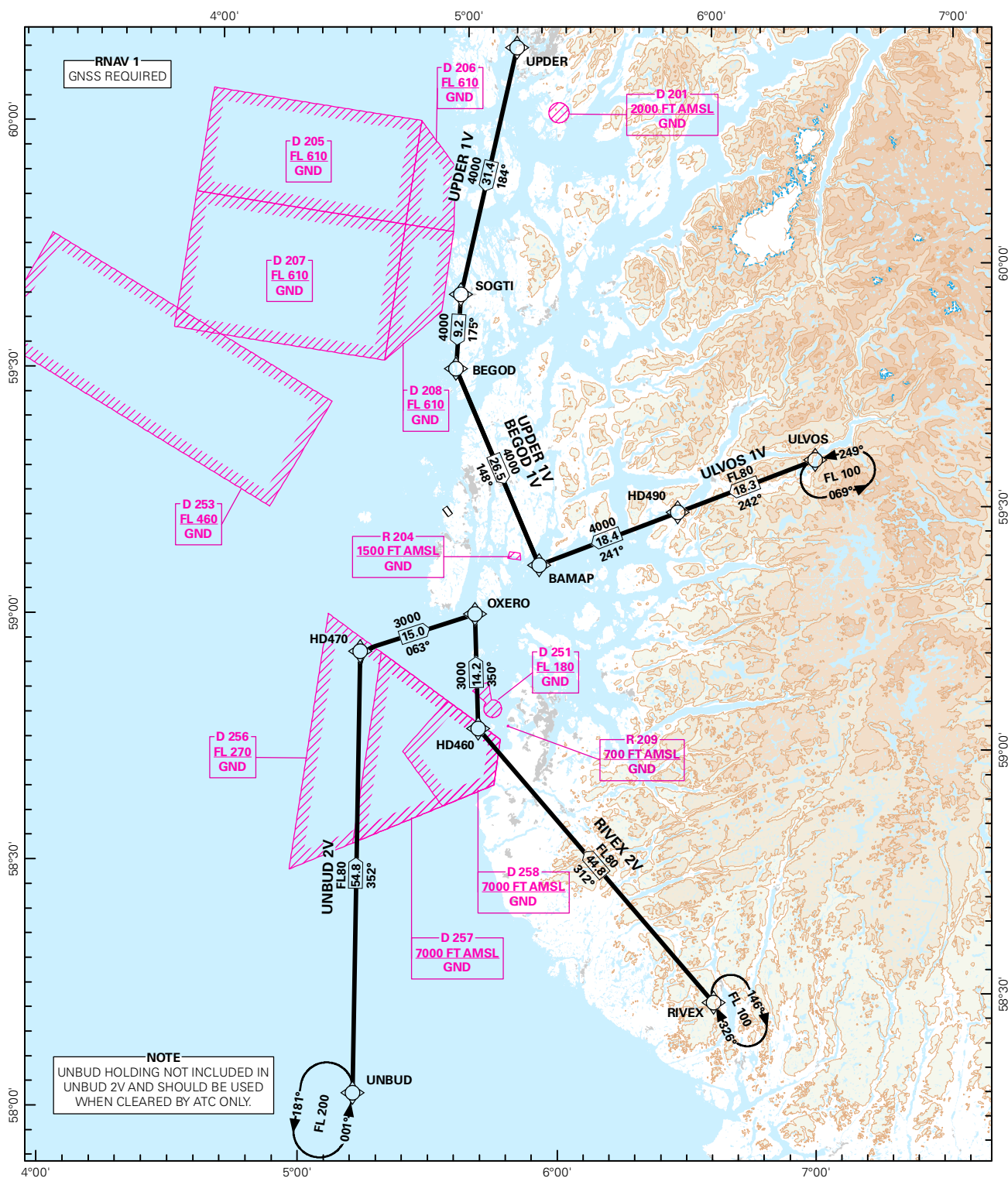


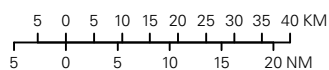
STANDARD ARRIVAL CHART INSTRUMENT (RNAV 1 STAR BASED ON GNSS)

<div style="border: 1px solid black; border-radius: 50%; width: 60px; height: 60px; display: flex; align-items: center; justify-content: center; margin: 0 auto;"> <div style="font-size: 24px; font-weight: bold;">4₂</div> </div> <div style="text-align: center; font-weight: bold; margin-top: 5px;">MSA 25 NM ARP</div>	ATIS: 118.175	ALT AND ELEV ARE IN FT DIST IN NM		HAUGESUND/KARMØY RWY 32 NORWAY
	APP: -			
	TWR: 120.500 121.100			
		1:1 350 000	VAR: 0.3 ° E (2015)	TA 7000
BEGOD 1V, RIVEX 2V, ULVOS 1V, UNBUD 2V, UPDER 1V				



STAR DESCRIPTION OVERLEAF
DESCRIPTION OF WAYPOINTS, REF ENR 4.4

ATS AIRSPACE CLASSIFICATIONS: REF ENR 1.4
LEGEND: REF GEN 2.3



CHANGES: UNBUD 2V.

**STANDARD ARRIVAL ROUTES - INSTRUMENT
(RNAV 1 STAR BASED ON GNSS)**
**HAUGESUND/KARMØY
RWY 32**

GENERAL: Class A GNSS shall not be used.
Surveillance service shall be available.

LOSS OF RNAV 1 CAPABILITY: Request vectoring.

**VECTORIZING/
DIRECT ROUTING:** Vectoring may be used for sequencing.

RADIO COMMUNICATION FAILURE: Squawk A7600. Proceed on STAR and make APCH to RWY 32.

DESIGNATOR	ROUTE	RESTRICTIONS	DESCEND	CLEARANCE LIMIT
BEGOD 1V (BEGOD ONE VICTOR ARRIVAL)	From BEGOD to BAMAP.	Cross BAMAP at or above 4000 FT.	As cleared by ATC.	BAMAP
UNBUD 2V (UNBUD TWO VICTOR ARRIVAL)	From UNBUD to HD470, to OXERO.	Cross UNBUD at or above FL100. Cross HD470 at or above FL080. Cross OXERO at or above 3000 FT.	As cleared by ATC.	OXERO
RIVEX 2V (RIVEX TWO VICTOR ARRIVAL)	From RIVEX to HD460, to OXERO.	Cross RIVEX at or above FL100. Cross HD460 at or above FL080. Cross OXERO at or above 3000 FT.	As cleared by ATC.	OXERO
ULVOS 1V (ULVOS ONE VICTOR ARRIVAL)	From ULVOS to HD490, to BAMAP.	Cross ULVOS at or above FL100. Cross HD490 at or above FL080. Cross BAMAP at or above 4000 FT.	As cleared by ATC.	BAMAP
UPDER 1V (UPDER ONE VICTOR ARRIVAL)	From UPDER to SOGTI, to BEGOD, to BAMAP.	Cross BAMAP at or above 4000 FT.	As cleared by ATC.	BAMAP