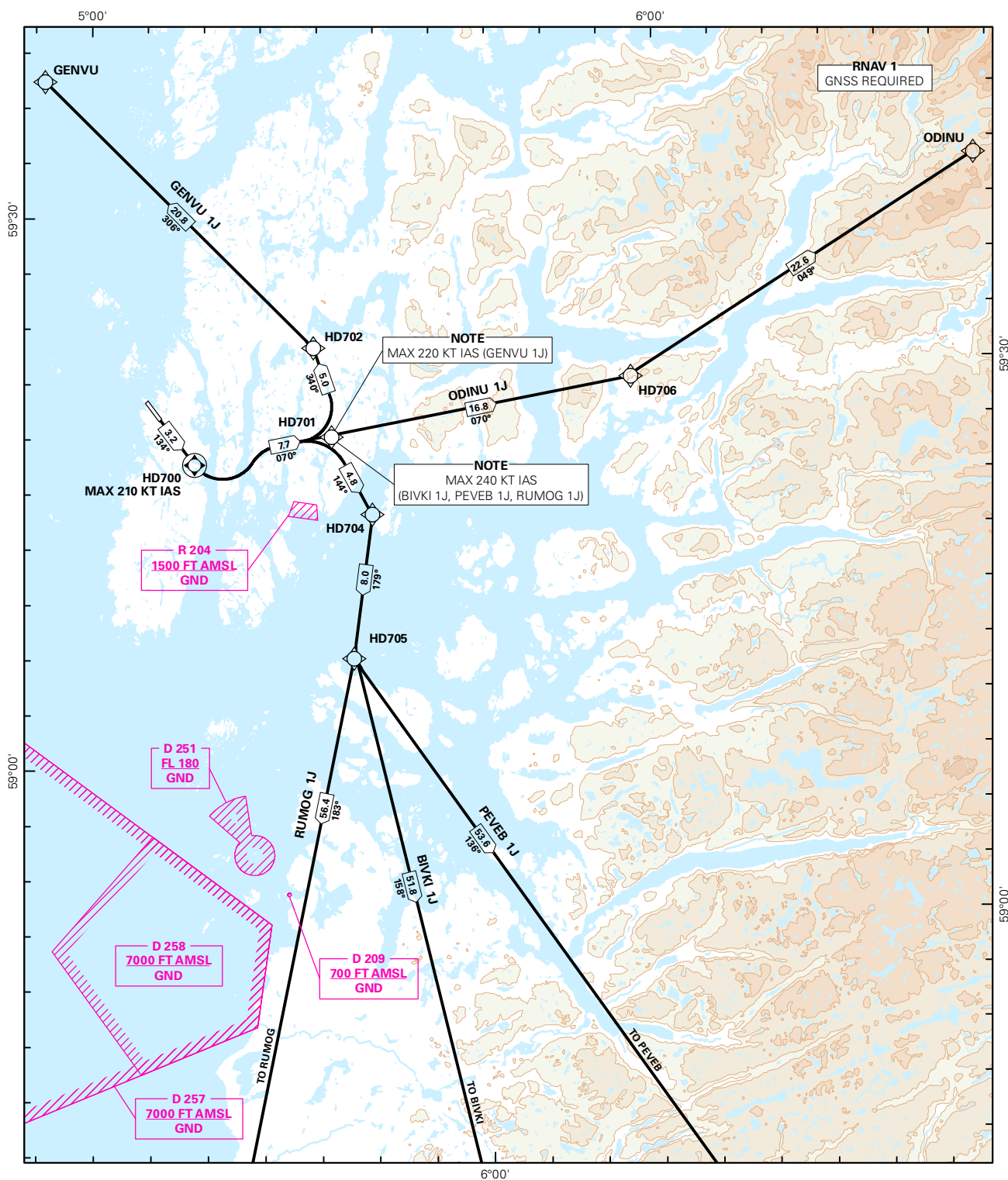


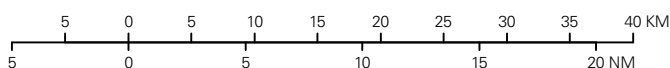
STANDARD DEPARTURE CHART INSTRUMENT (RNAV 1 SID BASED ON GNSS)

<div style="border: 1px solid black; border-radius: 50%; width: 60px; height: 60px; display: flex; align-items: center; justify-content: center; margin: 0 auto;"> <div style="font-size: 24px; font-weight: bold;">4₂</div> </div> <div style="text-align: center; font-size: 10px; margin-top: 5px;">MSA 25 NM ARP</div>	ATIS: 118.175	ALT AND ELEV ARE IN FT DIST IN NM		HAUGESUND/KARMØY	
	APP: -				
	TWR: 120.500 121.100				
		1:600 000	VAR: 0.3 ° E (2015)	TA 7000	RWY 14
BIVKI 1J, GENVU 1J, ODINU 1J, PEVEB 1J, RUMOG 1J					
NORWAY					



SID DESCRIPTION OVERLEAF
DESCRIPTION OF WAYPOINTS, REF ENR 4.4

ATS AIRSPACE CLASSIFICATIONS: REF ENR 1.4
LEGEND: REF GEN 2.3



CHANGES: NEW PROCEDURES.

**STANDARD DEPARTURE ROUTES - INSTRUMENT
(RNAV 1 SID BASED ON GNSS)**
**HAUGESUND/Karmøy
RWY 14**

GENERAL:	Class A GNSS shall not be used. Surveillance service shall be available.
RADIO COMMUNICATION FAILURE:	Squawk A7600. Maintain last assigned LVL until passing points as described in "CLIMB TO" table for each individual SID (e.g. HD704 for BIVKI 1J), then climb CPL cruising LVL. Aircraft under vectoring shall, after set transponder to A7600, proceed in the most direct manner possible to rejoin the CPL route no later than the next significant point, climbing to the CPL cruising LVL taking into consideration the applicable MNM flight ALT.
VECTORIZING/ DIRECT ROUTING:	When being vectored or cleared for DCT routing, the climb gradient(s) stated in SID "RESTRICTIONS" apply.
NON RNAV 1 ACFT:	At first contact with KARMØY ATC state "UNABLE RNAV 1 DUE (reason)". OMNI-DIRECTIONAL DEPARTURE available (see ENHD AD 2.24).
NOTE:	The segment distances from HD700 to HD701 and from HD701 to HD702/HD704 are based on average flight path criteria.

DESIGNATOR	ROUTE	RESTRICTIONS	CLIMB TO	CONTACT
BIVKI 1J (BIVKI ONE JULIET DEPARTURE)	To HD700 on course 134°, to HD701, to HD704, to HD705, to BIVKI.	MNM climb gradient 5.5% (335 FT/NM) to 4000 FT. MAX 210 KT IAS at HD700. MAX 240 KT IAS at HD701. If unable to comply inform ATC.	6000 FT. RCF: If no further climb received prior to HD704, climb to CPL cruising LVL.	As instructed by KARMØY TWR.
GENVU 1J (GENVU ONE JULIET DEPARTURE)	To HD700 on course 134°, to HD701, turn left to HD702, to GENVU.	MNM climb gradient 5.5% (335 FT/NM) to 4000 FT. MAX 210 KT IAS at HD700. MAX 220 KT IAS at HD701. If unable to comply inform ATC.	6000 FT. RCF: If no further climb received prior to HD702, climb to CPL cruising LVL.	As instructed by KARMØY TWR.
ODINU 1J (ODINU ONE JULIET DEPARTURE)	To HD700 on course 134°, to HD701, to HD706, to ODINU.	MNM climb gradient 5.5% (335 FT/NM) to 4000 FT. MAX 210 KT IAS at HD700. If unable to comply inform ATC.	6000 FT. RCF: If no further climb received prior to HD701, climb to CPL cruising LVL.	As instructed by KARMØY TWR.
PEVEB 1J (PEVEB ONE JULIET DEPARTURE)	To HD700 on course 134°, to HD701, to HD704, to HD705, to PEVEB.	MNM climb gradient 5.5% (335 FT/NM) to 4000 FT. MAX 210 KT IAS at HD700. MAX 240 KT IAS at HD701. If unable to comply inform ATC.	6000 FT. RCF: If no further climb received prior to HD704, climb to CPL cruising LVL.	As instructed by KARMØY TWR.
RUMOG 1J (RUMOG ONE JULIET DEPARTURE)	To HD700 on course 134°, to HD701, to HD704, to HD705, to RUMOG.	MNM climb gradient 5.5% (335 FT/NM) to 4000 FT. MAX 210 KT IAS at HD700. MAX 240 KT IAS at HD701. If unable to comply inform ATC.	6000 FT. RCF: If no further climb received prior to HD704, climb to CPL cruising LVL.	As instructed by KARMØY TWR.