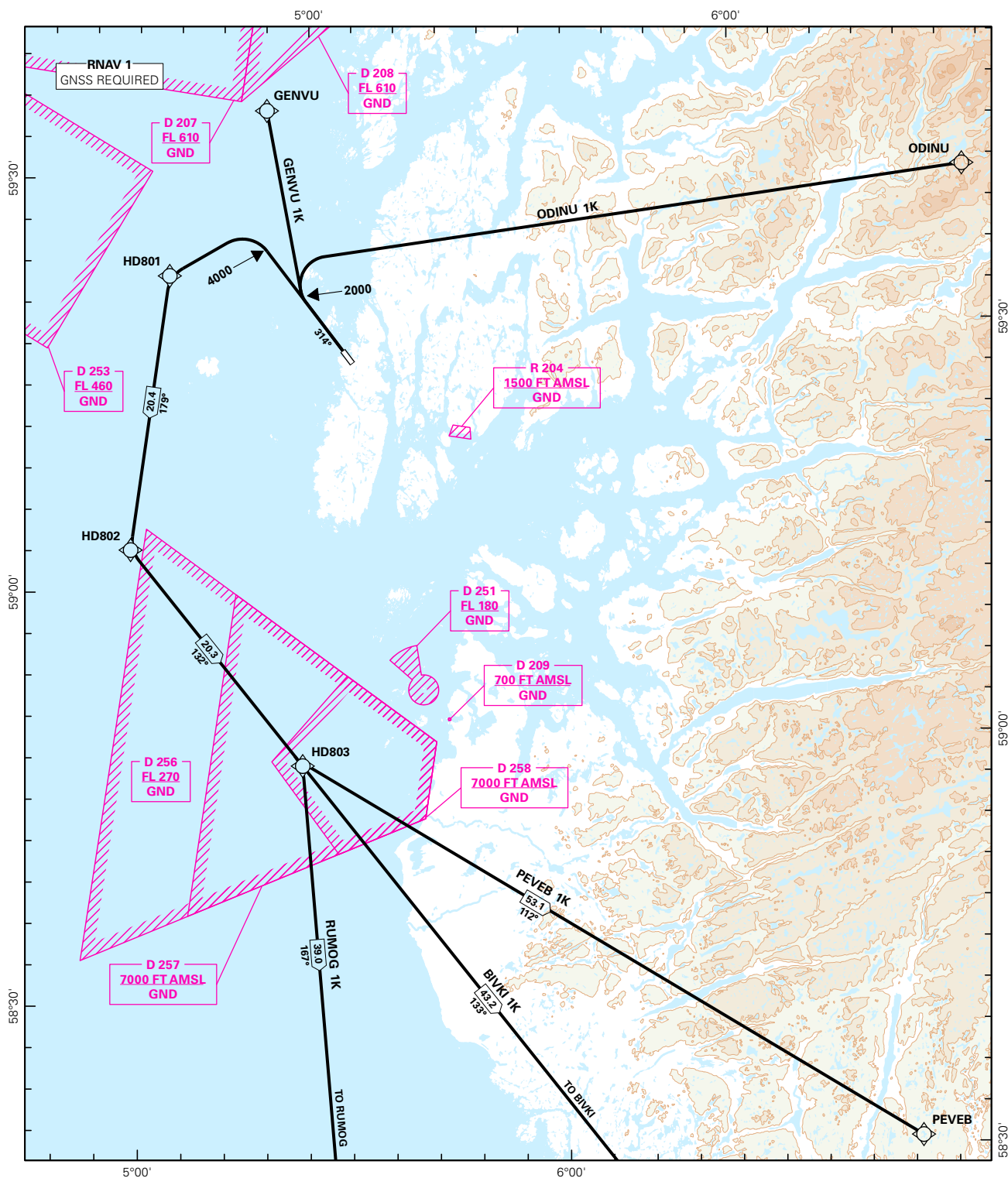


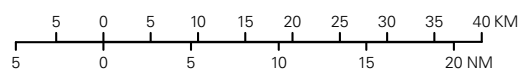
STANDARD DEPARTURE CHART INSTRUMENT (RNAV 1 SID BASED ON GNSS)

<div style="border: 1px solid black; border-radius: 50%; width: 60px; height: 60px; display: flex; align-items: center; justify-content: center; margin: 0 auto;"> <div style="font-size: 24px; font-weight: bold;">4₂</div> </div> <div style="text-align: center; margin-top: 5px;">MSA 25 NM ARP</div>	ATIS: 118.175	ALT AND ELEV ARE IN FT DIST IN NM		HAUGESUND/KARMØY	
	APP: -				
	TWR: 120.500 121.100				
		1:800 000	VAR: 0.3 ° E (2015)	TA 7000	RWY 32
BIVKI 1K, GENVU 1K, ODINU 1K, PEVEB 1K, RUMOG 1K					
NORWAY					



SID DESCRIPTION OVERLEAF
DESCRIPTION OF WAYPOINTS, REF ENR 4.4

ATS AIRSPACE CLASSIFICATIONS: REF ENR 1.4
LEGEND: REF GEN 2.3



CHANGES: NEW PROCEDURES.

**STANDARD DEPARTURE ROUTES - INSTRUMENT
(RNAV 1 SID BASED ON GNSS)**
**HAUGESUND/Karmøy
RWY 32**
GENERAL:

Class A GNSS shall not be used.
Surveillance service shall be available.

**RADIO COMMUNICATION
FAILURE:**

Squawk A7600. Maintain last assigned LVL until passing points as described in "CLIMB TO" table for each individual SID (e.g. HD802 for BIVKI 1K), then climb CPL cruising LVL. Aircraft under vectoring shall, after set transponder to A7600, proceed in the most direct manner possible to rejoin the CPL route no later than the next significant point, climbing to the CPL cruising LVL taking into consideration the applicable MNM flight ALT.

**VECTORIZING/
DIRECT ROUTING:**

When being vectored or cleared for DCT routing, the climb gradient(s) stated in SID "RESTRICTIONS" apply.

NON RNAV 1 ACFT:

At first contact with KARMØY ATC state "UNABLE RNAV 1 DUE (reason)".
OMNI-DIRECTIONAL DEPARTURE available (see ENHD AD 2.24).

DESIGNATOR	ROUTE	RESTRICTIONS	CLIMB TO	CONTACT
BIVKI 1K (BIVKI ONE KILO DEPARTURE)	Climb on course 314° to 4000 FT, turn left DCT HD801, to HD802, to HD803, to BIVKI.		6000 FT. RCF: If no further climb received prior to HD802, climb to CPL cruising LVL.	As instructed by KARMØY TWR.
GENVU 1K (GENVU ONE KILO DEPARTURE)	Climb on course 314° to 2000 FT, DCT GENVU.		6000 FT. RCF: If no further climb received prior to GENVU, climb to CPL cruising LVL.	As instructed by KARMØY TWR.
ODINU 1K (ODINU ONE KILO DEPARTURE)	Climb on course 314° to 2000 FT, turn right DCT ODINU.		6000 FT. RCF: If no further climb received prior to 32 NM to ODINU, climb to CPL cruising LVL.	As instructed by KARMØY TWR.
PEVEB 1K (PEVEB ONE KILO DEPARTURE)	Climb on course 314° to 4000 FT, turn left DCT HD801, to HD802, to HD803, to PEVEB.		6000 FT. RCF: If no further climb received prior to HD802, climb to CPL cruising LVL.	As instructed by KARMØY TWR.
RUMOG 1K (RUMOG ONE KILO DEPARTURE)	Climb on course 314° to 4000 FT, turn left DCT HD801, to HD802, to HD803, to RUMOG.		6000 FT. RCF: If no further climb received prior to HD802, climb to CPL cruising LVL.	As instructed by KARMØY TWR.