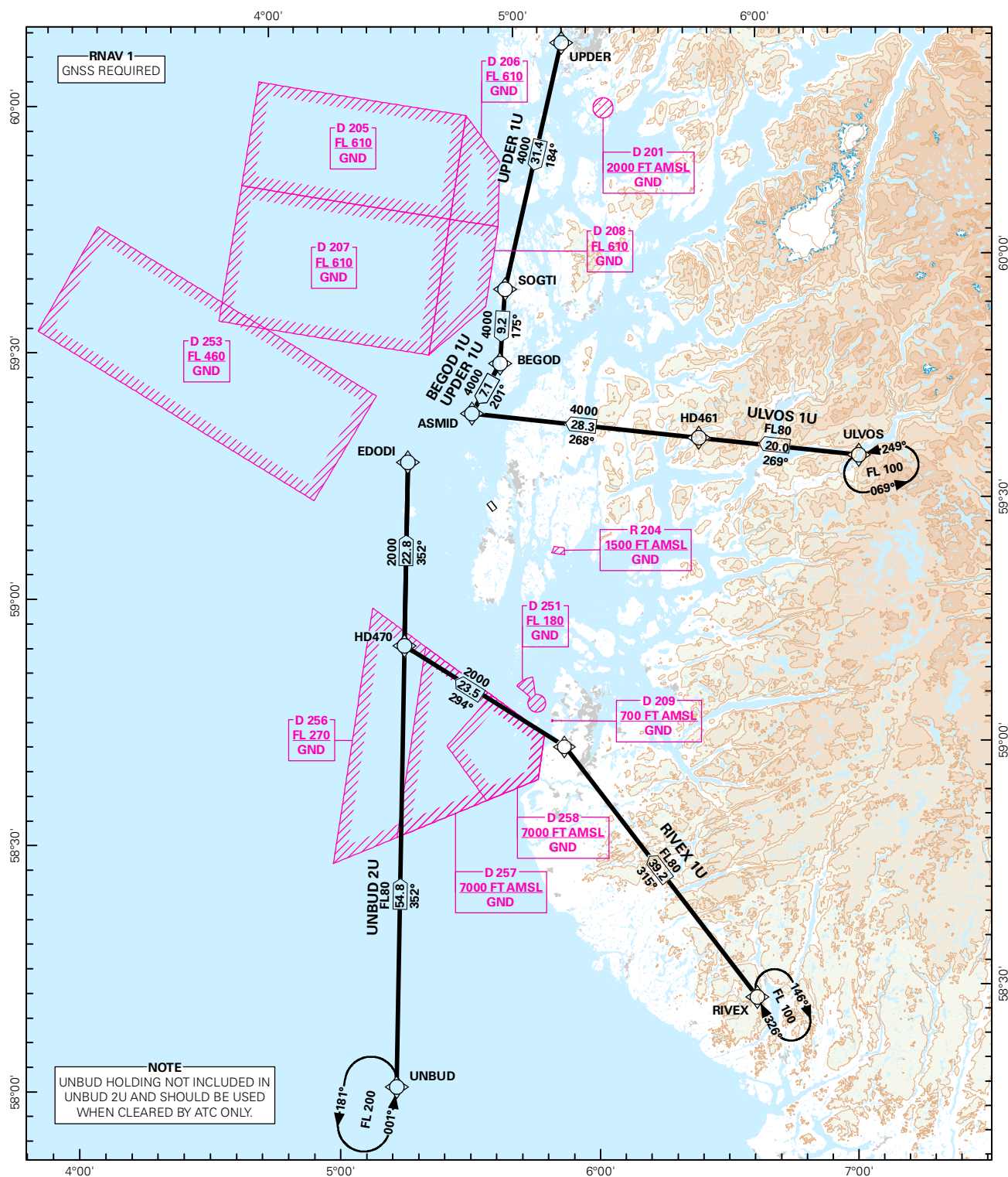


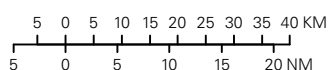
STANDARD ARRIVAL CHART INSTRUMENT (RNAV 1 STAR BASED ON GNSS)

<div style="border: 1px solid black; border-radius: 50%; width: 60px; height: 60px; display: flex; align-items: center; justify-content: center; margin: 0 auto;"> <div style="font-size: 24px; font-weight: bold;">4₂</div> </div> <div style="text-align: center; margin-top: 5px;">MSA 25 NM ARP</div>	ATIS: 118.175	ALT AND ELEV ARE IN FT DIST IN NM		HAUGESUND/KARMØY RWY 14 NORWAY
	APP: -			
	TWR: 120.500 121.100			
		1:1 350 000	VAR: 0.3 ° E (2015)	TA 7000
BEGOD 1U, RIVEX1U, ULVOS 1U, UNBUD 2U, UPDER 1U				



STAR DESCRIPTION OVERLEAF
DESCRIPTION OF WAYPOINTS, REF ENR 4.4

ATS AIRSPACE CLASSIFICATIONS: REF ENR 1.4
LEGEND: REF GEN 2.3



CHANGES: UNBUD 2U.

**STANDARD ARRIVAL ROUTES - INSTRUMENT
(RNAV 1 STAR BASED ON GNSS)**
**HAUGESUND/Karmøy
RWY 14**

GENERAL:	Class A GNSS shall not be used. Surveillance service shall be available.
LOSS OF RNAV 1 CAPABILITY:	Request vectoring.
VECTORING/ DIRECT ROUTING:	Vectoring may be used for sequencing.
RADIO COMMUNICATION FAILURE:	Squawk A7600. Proceed on STAR and make APCH to RWY 14.

DESIGNATOR	ROUTE	RESTRICTIONS	DESCEND	CLEARANCE LIMIT
BEGOD 1U (BEGOD ONE UNIFORM ARRIVAL)	From BEGOD to ASMID.	Cross ASMID at or above 4000 FT.	As cleared by ATC.	ASMID
RIVEX 1U (RIVEX ONE UNIFORM ARRIVAL)	From RIVEX to ZOL, to HD470, to EDODI.	Cross RIVEX at or above FL100. Cross ZOL at or above FL080. Cross EDODI at or above 2000 FT.	As cleared by ATC.	EDODI
ULVOS 1U (ULVOS ONE UNIFORM ARRIVAL)	From ULVOS to HD461, to ASMID.	Cross ULVOS at or above FL100. Cross HD461 at or above FL080. Cross ASMID at or above 4000 FT.	As cleared by ATC.	ASMID
UNBUD 2U (UNBUD TWO UNIFORM ARRIVAL)	From UNBUD to HD470, to EDODI.	Cross UNBUD at or above FL100. Cross HD470 at or above FL080. Cross EDODI at or above 2000 FT.	As cleared by ATC.	EDODI
UPDER 1U (UPDER ONE UNIFORM ARRIVAL)	From UPDER to SOGTI, to BEGOD, to ASMID.	Cross ASMID at or above 4000 FT.	As cleared by ATC.	ASMID