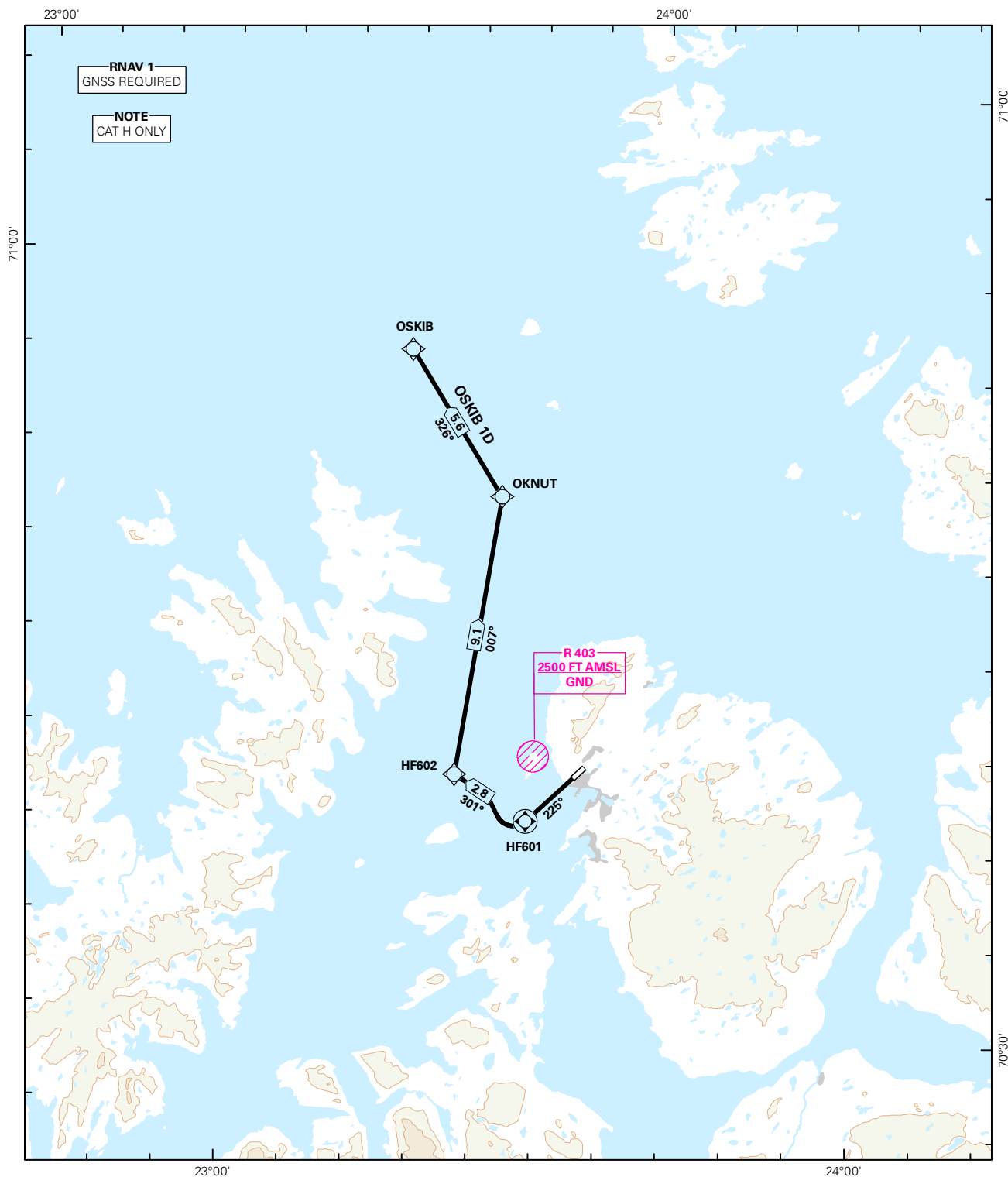


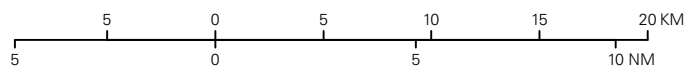
## STANDARD DEPARTURE CHART INSTRUMENT (RNAV 1 SID BASED ON GNSS)

<div style="border: 1px solid black; border-radius: 50%; width: 60px; height: 60px; display: flex; align-items: center; justify-content: center; margin: 0 auto;"> <div style="font-size: 24px; font-weight: bold;">4</div> <div style="font-size: 12px; font-weight: bold;">6</div> </div>	ATIS: 136.100	ALT AND ELEV ARE IN FT DIST IN NM			<b>HAMMERFEST</b>
	APP: 126.700				
	AFIS: 121.100	1:350 000    VAR: 11.0 ° E (2015)    TA 7000			<b>RWY 23</b>
	VDF: 121.100				
MSA 25 NM ARP					NORWAY
					OSKIB 1D



SID DESCRIPTION OVERLEAF  
DESCRIPTION OF WAYPOINTS, REF ENR 4.4

ATS AIRSPACE CLASSIFICATIONS: REF ENR 1.4  
LEGEND: REF GEN 2.3



CHANGES: NEW PROCEDURE.

**STANDARD DEPARTURE ROUTES - INSTRUMENT  
(RNAV 1 SID BASED ON GNSS)**
**HAMMERFEST  
RWY 23**

**REMARKS:** CAT H only.

**RADIO COMMUNICATION FAILURE:** Squawk A7600. Maintain last assigned LVL for 2 minutes, then climb to CPL cruising LVL. Aircraft under vectoring shall, after set transponder to A 7600, proceed in the most direct manner possible to rejoin the CPL route no later than the next significant point, climbing to the CPL cruising LVL taking into consideration the applicable MNM flight ALT.

**CLOSE IN OBSTACLES** Rising terrain, up to 0.15 NM from THR 05, requires more than 3.6 % climb gradient and must be avoided visually or by other means

**VECTORIZING/  
DIRECT ROUTING:** When being vectored or cleared for DCT routing, the climb gradient(s) stated in SID "RESTRICTIONS"-table apply.

**ATC CLEARANCE:** Departing IFR flights shall obtain ATC clearance from HAMMERFEST INFORMATION.

**NON RNAV 1 ACFT:** At first contact with HAMMERFEST INFORMATION state "UNABLE RNAV 1 DUE (reason)".  
OMNI-DIRECTIONAL DEPARTURE available (see ENHF AD 2.24)

**NOTE** Gradient is less than the recommended minimum value (5.0 %) in ICAO DOC 8168 VOL II.

DESIGNATOR	ROUTE	RESTRICTIONS	CLIMB TO	CONTACT
<b>OSKIB 1D</b> (OSKIB ONE DELTA DEPARTURE)	Climb to HF601 on course 225°. To HF602, to OKNUT, to OSKIB.	MNM climb gradient 3.6 % (219 FT/NM).  If unable to comply, inform ATC.	As cleared by ATC	As instructed by HAMMERFEST INFORMATION