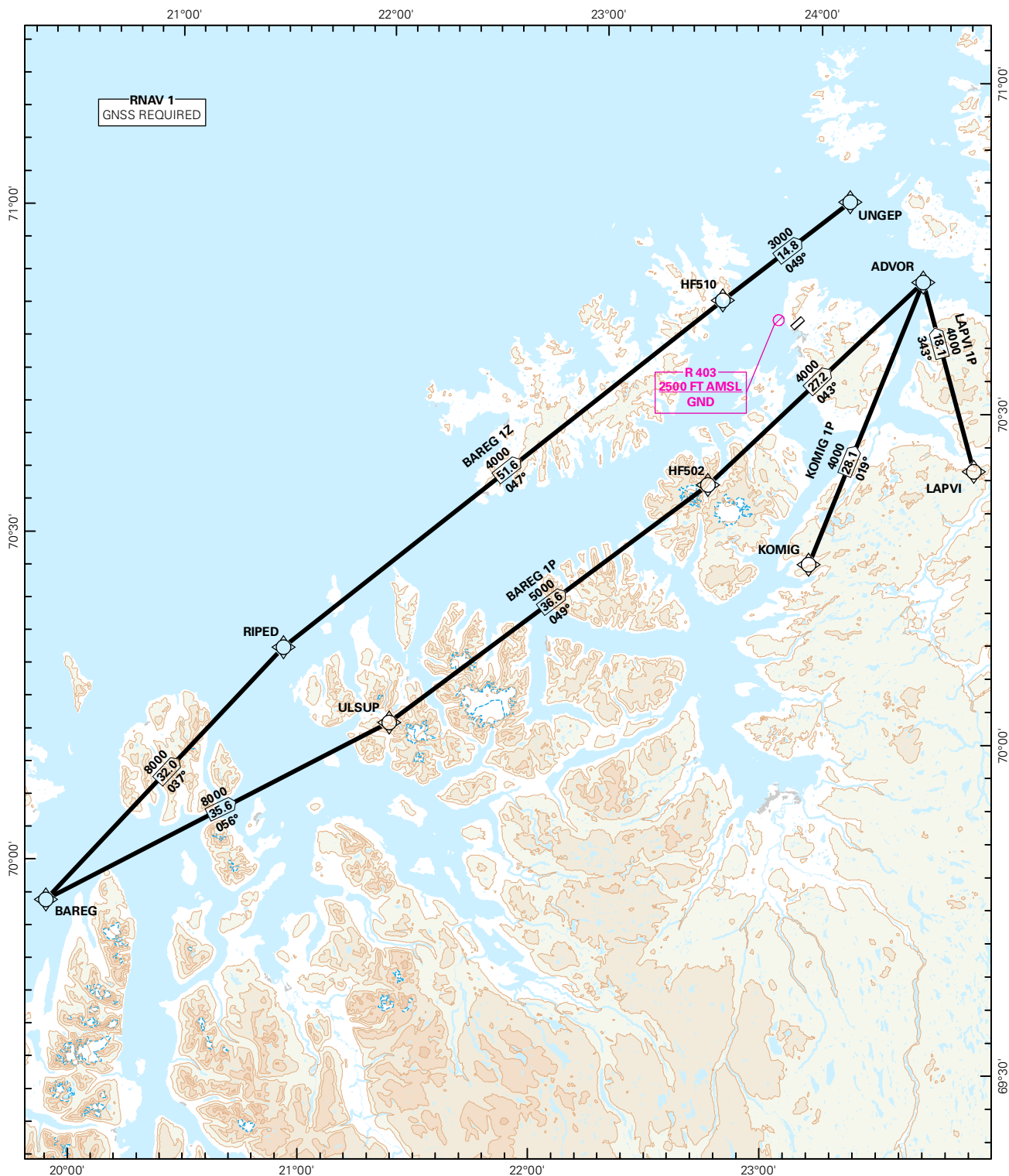


## STANDARD ARRIVAL CHART INSTRUMENT (RNAV 1 STAR BASED ON GNSS)

<div style="border: 1px solid black; border-radius: 50%; width: 60px; height: 60px; display: flex; align-items: center; justify-content: center; margin: 0 auto;"> <div style="font-size: 24px; font-weight: bold;">4</div> <div style="font-size: 12px; font-weight: bold;">6</div> </div>	ATIS: 136.100	ALT AND ELEV ARE IN FT DIST IN NM			<div style="text-align: center;"> <b>HAMMERFEST</b>  <b>RWY 23</b>  <b>NORWAY</b> </div>
	APP: 126.700				
	AFIS: 121.000				
	VDF: 121.000				
MSA 25 NM ARP		1:1 000 000	VAR: 11.0 ° E (2015)	TA 7000	BAREG 1P, BAREG 1Z, KOMIG 1P, LAPVI 1P



CHANGES: NEW PROCEDURES.

**STANDARD ARRIVAL ROUTES - INSTRUMENT  
(RNAV 1 STAR BASED ON GNSS)**
**HAMMERFEST  
RWY 23**

**REMARKS:** CAT A, B only.

**GENERAL:** Class A GNSS shall not be used.  
Surveillance service shall be available.

**LOSS OF RNAV 1 CAPABILITY:** Request vectoring.

**VECTORIZING:** Vectoring may be used for sequencing.

**RADIO COMMUNICATION FAILURE:** Squawk A7600. Proceed on STAR and make APCH to RWY 23.

DESIGNATOR	ROUTE	RESTRICTIONS	DESCEND	CLEARANCE LIMIT
<b>BAREG 1Z</b> (BAREG ONE ZULU ARRIVAL)	From BAREG to RIPED. To HF510. To UNGEP.	Cross RIPED at or above FL080. Cross HF510 at or above 4000 FT. Cross UNGEP at or above 3000 FT.	As cleared by ATC.	UNGEP
<b>BAREG 1P</b> (BAREG ONE PAPA ARRIVAL)	From BAREG to ULSUP. To HF502. To ADVOR.	Cross ULSUP at or above FL080. Cross HF502 at or above 5000 FT. Cross ADVOR at or above 4000 FT.	As cleared by ATC.	ADVOR
<b>KOMIG 1P</b> (KOMIG ONE PAPA ARRIVAL)	From KOMIG to ADVOR	Cross ADVOR at or above 4000 FT.	As cleared by ATC.	ADVOR
<b>LAPVI 1P</b> (LAPVI ONE PAPA ARRIVAL)	From LAPVI to ADVOR	Cross ADVOR at or above 4000 FT.	As cleared by ATC.	ADVOR