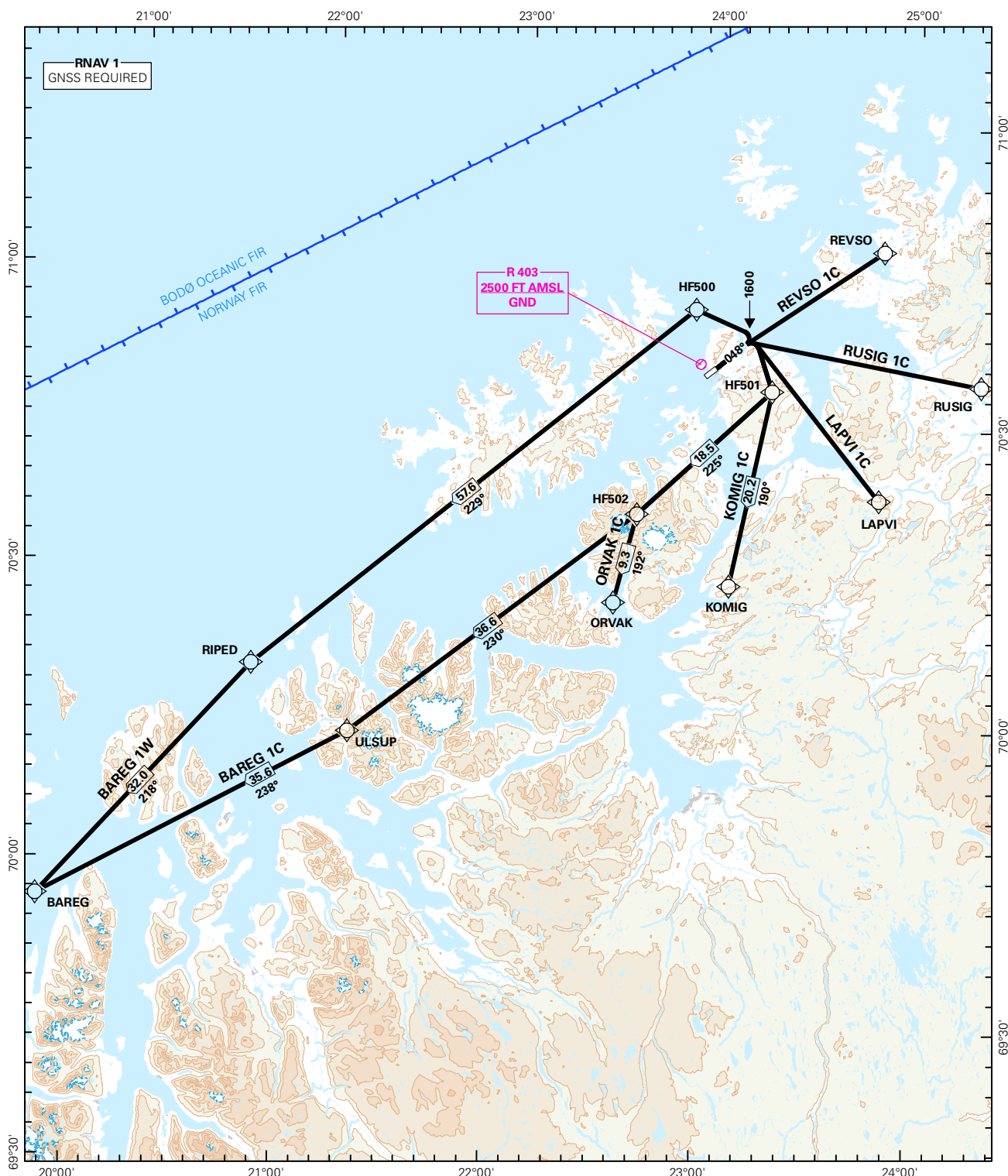


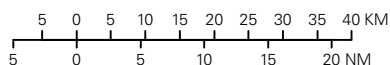
STANDARD DEPARTURE CHART INSTRUMENT (RNAV 1 SID BASED ON GNSS)

<div style="border: 1px solid black; border-radius: 50%; width: 60px; height: 60px; display: flex; align-items: center; justify-content: center; margin: 0 auto;">4₆</div> <div style="text-align: center; margin-top: 5px;">MSA 25 NM ARP</div>	ATIS: 136.100	ALT AND ELEV ARE IN FT DIST IN NM			<div style="text-align: center; font-weight: bold; font-size: 1.2em;">HAMMERFEST</div> <div style="text-align: center; font-weight: bold; font-size: 1.2em;">RWY 05</div> <div style="text-align: center;">NORWAY</div>
	APP: 126.700				
	AFIS: 121.100				
	VDF: 121.100				
		1:1 100 000	VAR: 11.0 ° E (2015)	TA 7000	
BAREG 1C, BAREG 1W, KOMIG 1C, LAPVI 1C, ORVAK 1C, REVSO 1C, RUSIG 1C					



SID DESCRIPTION OVERLEAF
DESCRIPTION OF WAYPOINTS, REF ENR 4.4

ATS AIRSPACE CLASSIFICATIONS: REF ENR 1.4
LEGEND: REF GEN 2.3



CHANGES: NEW PROCEDURE.

Avinor

23 JUN 2016

**STANDARD DEPARTURE ROUTES - INSTRUMENT
(RNAV 1 SID BASED ON GNSS)**
**HAMMERFEST
RWY 05**

REMARKS:	CAT A, B only.
GENERAL:	Class A GNSS shall not be used. Surveillance service shall be available.
RADIO COMMUNICATION FAILURE:	Squawk A7600. Maintain last assigned LVL for 2 minutes, then climb to CPL cruising LVL. Aircraft under vectoring shall, after set transponder to A 7600, proceed in the most direct manner possible to rejoin the CPL route no later than the next significant point, climbing to the CPL cruising LVL taking into consideration the applicable MNM flight ALT.
CLOSE-IN OBSTACLES:	Raising terrain immediately after DER up to 0.3 NM to the NW, require more than 9.0% climb gradient, and must be avoided visually or by other means.
VECTORIZING/ DIRECT ROUTING:	When being vectored or cleared for DCT routing, the climb gradient(s) stated in SID "RESTRICTIONS"-table apply.
ATC CLEARANCE:	Departing IFR flights shall obtain ATC clearance from HAMMERFEST INFORMATION.
NON RNAV 1 ACFT:	At first contact with HAMMERFEST INFORMATION state "UNABLE RNAV 1 DUE (reason)". OMNI-DIRECTIONAL DEPARTURE available (see ENHF AD 2.24)
NOTE:	No turns before the DER.

DESIGNATOR	ROUTE	RESTRICTIONS	CLIMB TO	CONTACT
BAREG 1C (BAREG ONE CHARLIE DEPARTURE)	Climb on course 048° to 1600 FT, turn right DCT HF501, to HF502, to ULSUP, to BAREG.	MNM climb gradient 9.0% (547 FT/NM) to 1600 FT. If unable to comply, inform ATC.	As cleared by ATC.	As instructed by HAMMERFEST INFORMATION
BAREG 1W (BAREG ONE WHISKEY DEPARTURE)	Climb on course 048° to 1600 FT, turn left DCT HF500, to RIPPED, to BAREG.	MNM climb gradient 9.0% (547 FT/NM) to 1600 FT. If unable to comply, inform ATC.	As cleared by ATC.	As instructed by HAMMERFEST INFORMATION
KOMIG 1C (KOMIG ONE CHARLIE DEPARTURE)	Climb on course 048° to 1600 FT, turn right DCT HF501, to KOMIG	MNM climb gradient 9.0% (547 FT/NM) to 1600 FT. If unable to comply, inform ATC.	As cleared by ATC.	As instructed by HAMMERFEST INFORMATION
LAPVI 1C (LAPVI ONE CHARLIE DEPARTURE)	Climb on course 048° to 1600 FT, turn right DCT LAPVI	MNM climb gradient 9.0% (547 FT/NM) to 1600 FT. If unable to comply, inform ATC.	As cleared by ATC.	As instructed by HAMMERFEST INFORMATION
ORVAK 1C (ORVAK ONE CHARLIE DEPARTURE)	Climb on course 048° to 1600 FT, turn right DCT HF501, to HF502, to ORVAK	MNM climb gradient 9.0% (547 FT/NM) to 1600 FT. If unable to comply, inform ATC.	As cleared by ATC.	As instructed by HAMMERFEST INFORMATION
REVSO 1C (REVSO ONE CHARLIE DEPARTURE)	Climb on course 048° to 1600 FT, turn right DCT REVSO	MNM climb gradient 9.0% (547 FT/NM) to 1600 FT. If unable to comply, inform ATC.	As cleared by ATC.	As instructed by HAMMERFEST INFORMATION
RUSIG 1C (RUSIG ONE CHARLIE DEPARTURE)	Climb on course 048° to 1600 FT, turn right DCT RUSIG	MNM climb gradient 9.0% (547 FT/NM) to 1600 FT. If unable to comply, inform ATC.	As cleared by ATC.	As instructed by HAMMERFEST INFORMATION