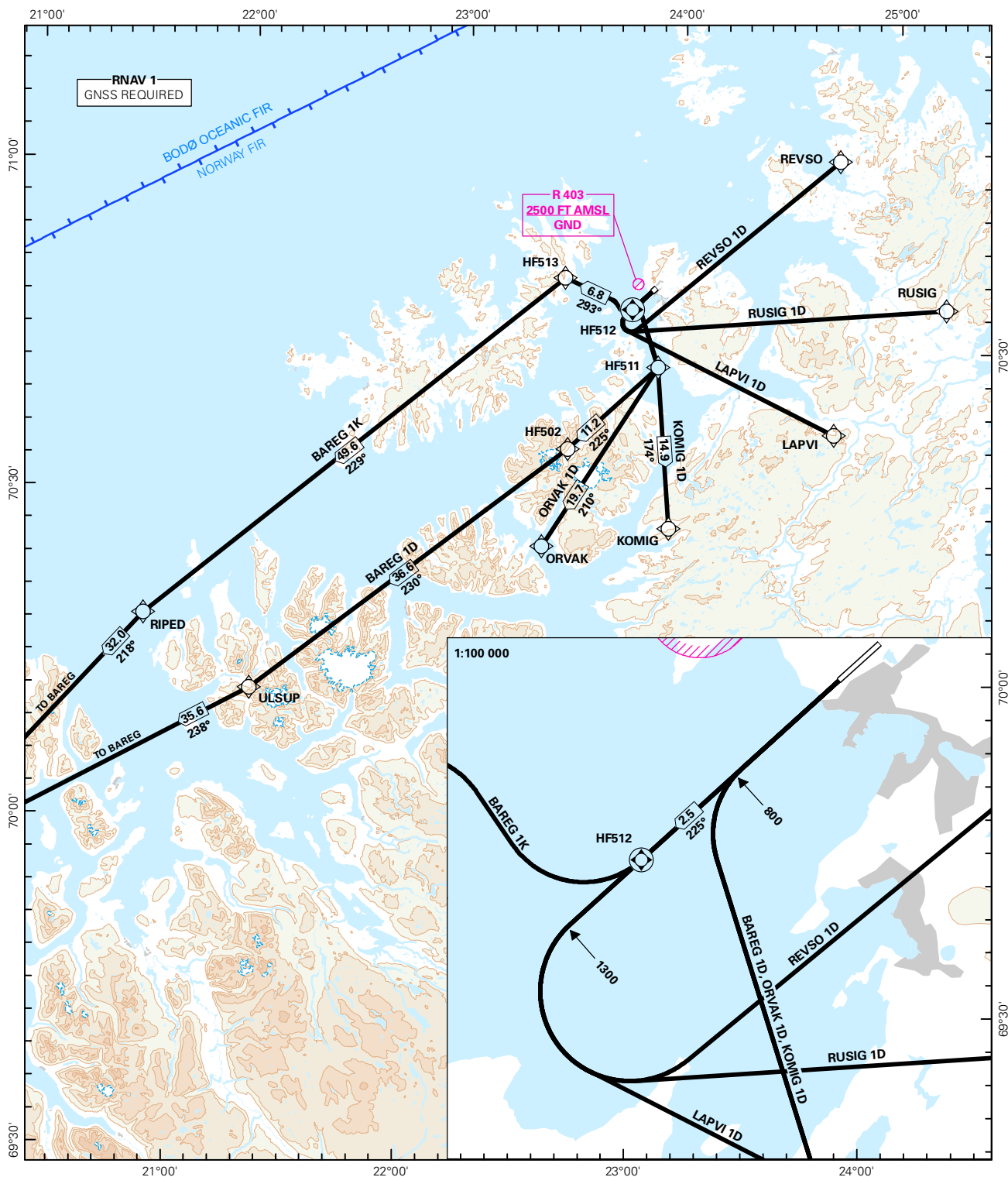


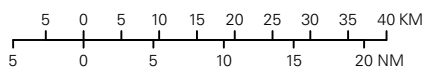
STANDARD DEPARTURE CHART INSTRUMENT (RNAV 1 SID BASED ON GNSS)

<div><div></div><div>4₆</div><div>MSA 25 NM ARP</div></div>	ATIS: 136.100	ALT AND ELEV ARE IN FT DIST IN NM			HAMMERFEST RWY 23 NORWAY
	APP: 126.700				
	AFIS: 121.000	1:1 000 000 VAR: 11.0 ° E (2015) TA 7000			
	VDF: 121.000				
BAREG 1D, BAREG 1K, KOMIG 1D, LAPVI 1D, ORVAK 1D, REVSO 1D, RUSIG 1D					



SID DESCRIPTION OVERLEAF
DESCRIPTION OF WAYPOINTS, REF ENR 4.4

ATS AIRSPACE CLASSIFICATIONS: REF ENR 1.4
LEGEND: REF GEN 2.3



CHANGES: NEW PROCEDURES.

**STANDARD DEPARTURE ROUTES - INSTRUMENT
(RNAV 1 SID BASED ON GNSS)**
**HAMMERFEST
RWY 23**

REMARKS:	CAT A, B only.
GENERAL:	Class A GNSS shall not be used. Surveillance service shall be available.
RADIO COMMUNICATION FAILURE:	Squawk A7600. Maintain last assigned LVL for 2 minutes, then climb to CPL cruising LVL. Aircraft under vectoring shall, after set transponder to A 7600, proceed in the most direct manner possible to rejoin the CPL route no later than the next significant point, climbing to the CPL cruising LVL taking into consideration the applicable MNM flight ALT.
CLOSE-IN OBSTACLES:	Raising terrain between THR RWY 05 and 0.2 NM from THR RWY 05 require more than 4.8% climb gradient, and must be avoided visually or by other means.
VECTORING/ DIRECT ROUTING:	When being vectored or cleared for DCT routing, the climb gradient(s) stated in SID "RESTRICTIONS"-table apply.
ATC CLEARANCE:	Departing IFR flights shall obtain ATC clearance from HAMMERFEST INFORMATION.
NON RNAV 1 ACFT:	At first contact with HAMMERFEST INFORMATION state "UNABLE RNAV 1 DUE (reason)". OMNI-DIRECTIONAL DEPARTURE available (see ENHF AD 2.24).

DESIGNATOR	ROUTE	RESTRICTIONS	CLIMB TO	CONTACT
BAREG 1D (BAREG ONE DELTA DEPARTURE)	Climb on course 225° to 800 FT, turn left DCT HF511, to HF502, to ULSUP, to BAREG.	MNM climb gradient 8.5% (516 FT/NM) to 3000 FT. If unable to comply, inform ATC. (MNM climb gradient for obstacle purposes is 3.9% (237 FT/NM) to 4500 FT).	As cleared by ATC.	As instructed by HAMMERFEST INFORMATION.
BAREG 1K (BAREG ONE KILO DEPARTURE)	Climb on course 225° to HF512, to HF513, to RIPED, to BAREG.	MNM climb gradient 3.7% (225 FT/NM) to 1400 FT. If unable to comply, inform ATC.	As cleared by ATC.	As instructed by HAMMERFEST INFORMATION.
KOMIG 1D (KOMIG ONE DELTA DEPARTURE)	Climb on course 225° to 800 FT, turn left DCT HF511, to KOMIG.	MNM climb gradient 8.5% (516 FT/NM) to 3000 FT. If unable to comply, inform ATC. (MNM climb gradient for obstacle purposes is 3.9% (237 FT/NM) to 1100 FT).	As cleared by ATC.	As instructed by HAMMERFEST INFORMATION.
LAPVI 1D (LAPVI ONE DELTA DEPARTURE)	Climb on course 225° to 1300 FT, turn left DCT LAPVI.	MNM climb gradient 7.1% (431 FT/NM) to 3000 FT. If unable to comply, inform ATC. (MNM climb gradient for obstacle purposes is 4.8% (292 FT/NM) to 1900 FT).	As cleared by ATC.	As instructed by HAMMERFEST INFORMATION.
ORVAK 1D (ORVAK ONE DELTA DEPARTURE)	Climb on course 225° to 800 FT, turn left DCT HF511, to ORVAK.	MNM climb gradient 8.5% (516 FT/NM) to 3000 FT. If unable to comply, inform ATC. (MNM climb gradient for obstacle purposes is 3.9% (237 FT/NM) to 3400 FT).	As cleared by ATC.	As instructed by HAMMERFEST INFORMATION.

REVSO 1D (REVSO ONE DELTA DEPARTURE)	Climb on course 225° to 1300 FT, turn left DCT REVSO.	MNM climb gradient 7.1% (431 FT/NM) to 3000 FT. If unable to comply, inform ATC. (MNM climb gradient for obstacle purposes is 4.8% (292 FT/NM) to 1900 FT).	As cleared by ATC.	As instructed by HAMMERFEST INFORMATION.
RUSIG 1D (RUSIG ONE DELTA DEPARTURE)	Climb on course 225° to 1300 FT, turn left DCT RUSIG.	MNM climb gradient 7.1% (431 FT/NM) to 3000 FT. If unable to comply, inform ATC. (MNM climb gradient for obstacle purposes is 4.8% (292 FT/NM) to 1900 FT).	As cleared by ATC.	As instructed by HAMMERFEST INFORMATION.