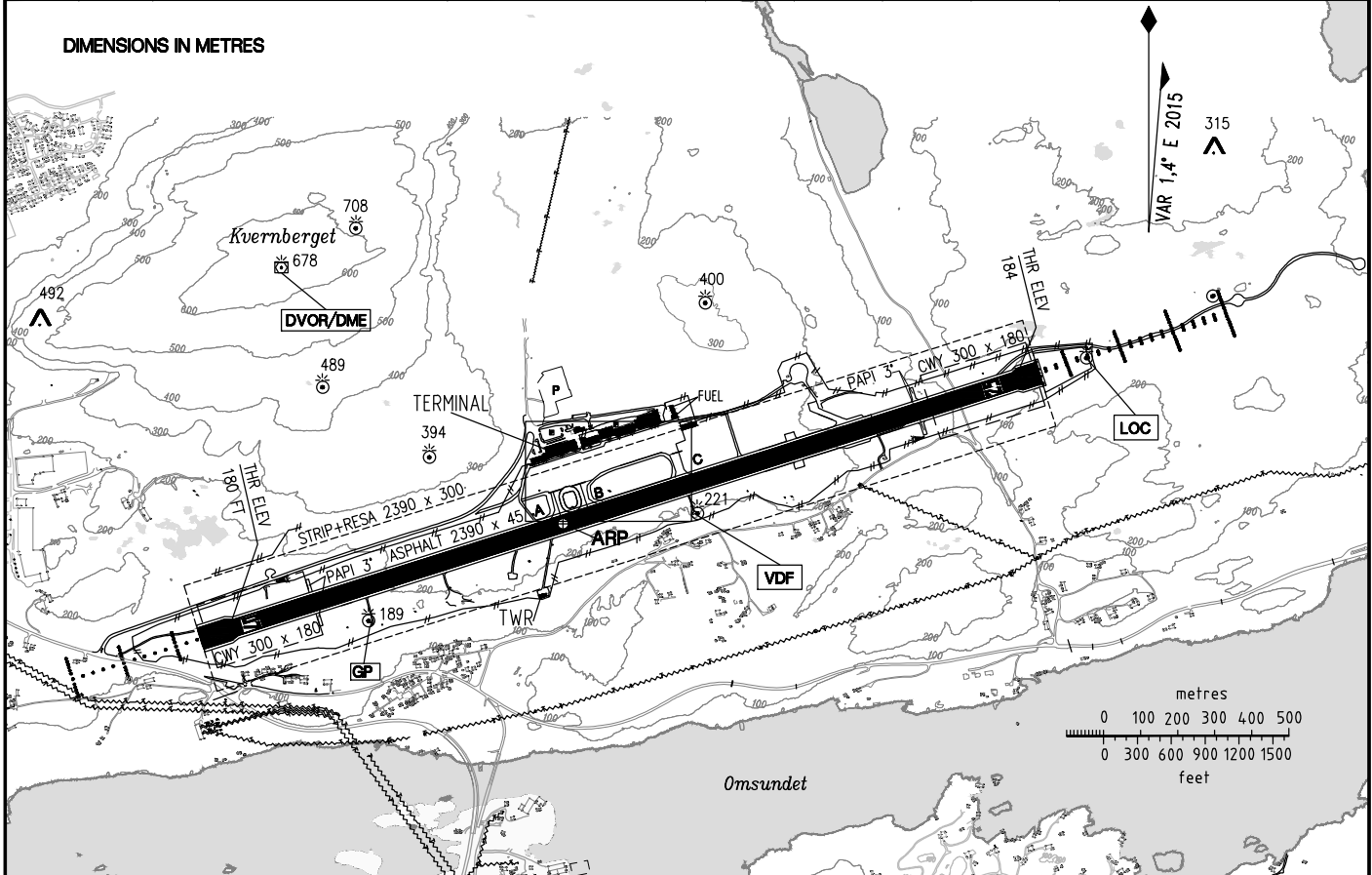


AERODROME CHART		63°06'43"N 007°49'34"E WGS 84		AD ELEV 205 FT	TWR 118.300 MHZ ATIS 135.075 MHZ		KRISTIANSUND KVERNBERGET NORWAY		
RWY	BRG (GEO)	THRESHOLD		BEARING STRENGTH	DECLARED DISTANCES				TWY AND APRON
					TORA	ASDA	TODA	LDA	
07	071.36°	630633.56 N	0074829.72 E	PCN-40/F/A/X/U	2080	2080	2380	2000	TWY A, B AND C: WID 23M, ASPH PCN-40/F/A/X/U APRON: ASPH PCN-40/F/A/X/U
25	251.40°	630656.67 N	0075101.17 E	PCN-40/F/A/X/U	2070	2070	2370	2000	



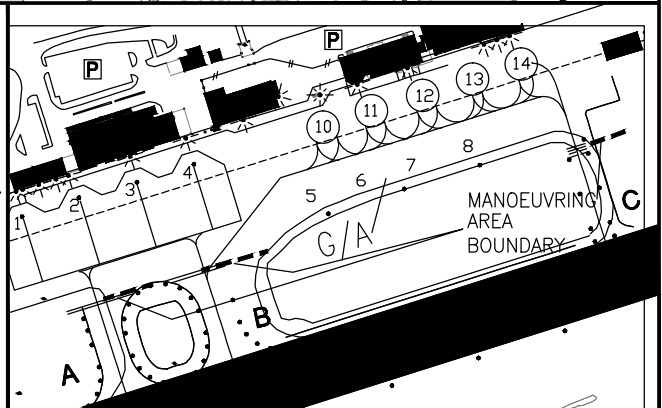
NOTES-REMARKS

1) APCH LGT RWY 07:
CAT I, LIH, 450 M. INNERMOST LGT 30 M FM THR. XBAR AT 150, 300 AND 450 M.
OMNIDIRECTIONAL LIL ON CL AND SECOND XBAR.
SEQUENCED FLASHING LIGHTS 630 M, ON EXTENDED CL.

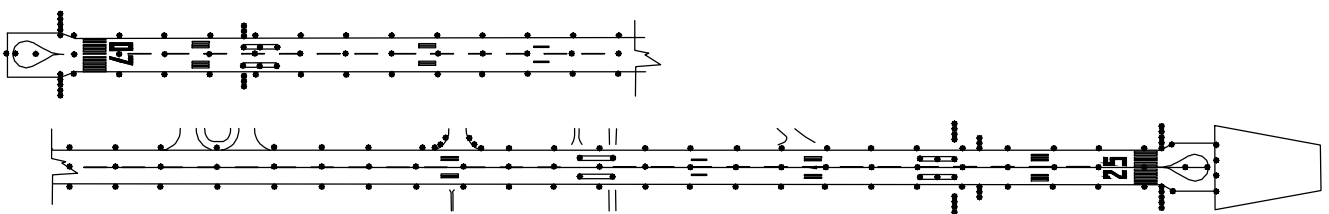
2) APCH LGT RWY 25:
CAT 1 LIH, 600 M. INNERMOST LGT 30 M FM THR. XBAR AT 150, 300, 450 AND 600 M.
OMNIDIRECTIONAL LIL ON CL AND SECOND XBAR.
SEQUENCED FLASHING LIGHTS 600 M, ON EXTENDED CL.

3) DO NOT USE OUTSIDE 6 NM FM THR

- RWY 07 AND 25: LGTD AIMING POINT.



LIGHTING AND MARKING AIDS RWY 07/25 AND EXIT TWY



CHANGES: FREQ TWR, MAG VAR AND EDITORIALS.

RWY	APCH	THR	PAPI	RWY CL	EDGE	END
07	W CL/XBAR LIH/L 1)	G LIH	3.0° MEHT 41FT	1100M W/600M W/R/300M R LIL	1400M W/600M Y LIH	R LIH
25	W CL/XBAR LIH/L 2)	G LIH	3.0° MEHT 50FT ³⁾	1100M W/600M W/R/300M R LIL	1400M W/600M Y LIH	R LIH