

STANDARD ARRIVAL CHART INSTRUMENT (RNAV 1 STAR BASED ON GNSS)

67

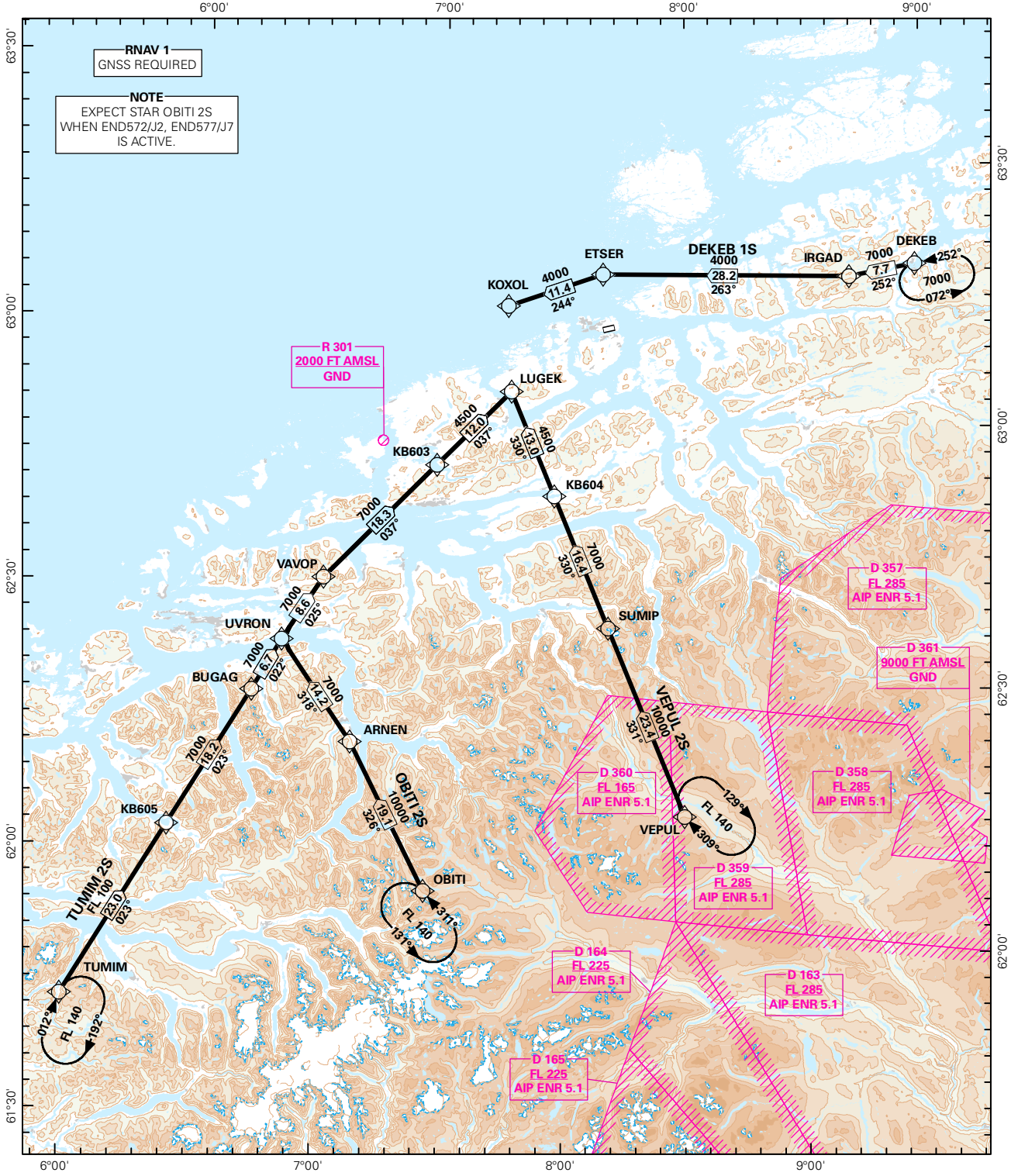
MSA 25 NM ARP

ATIS: 135.075
APP: 119.350
TWR: 118.300
VDF: 118.300 119.350

ALT AND ELEV ARE IN FT DIST IN NM		
1:1 250 000	VAR: 1.4 ° E (2015)	TA 7000

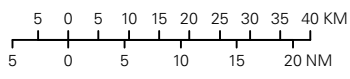
**KRISTIANSUND/
KVERNBERGET
RWY 07
NORWAY**

DEKEB 1S, OBITI 2S, TUMIM 2S, VEPUL 2S



STAR DESCRIPTION OVERLEAF
DESCRIPTION OF WAYPOINTS, REF ENR 4.4

ATS AIRSPACE CLASSIFICATIONS: REF ENR 1.4
LEGEND: REF GEN 2.3



CHANGES: EDITORIALS.

**STANDARD ARRIVAL ROUTES - INSTRUMENT
(RNAV 1 STAR BASED ON GNSS)****KRISTIANSUND/Kvernberget
RWY 07**

GENERAL:	Class A GNSS shall not be used. Surveillance service shall be available.
LOSS OF RNAV 1 CAPABILITY:	Request vectoring.
VECTORING:	Vectoring may be used for sequencing.
RADIO COMMUNICATION FAILURE:	Squawk A7600. Proceed on STAR and make APCH to RWY 07.

DESIGNATOR	ROUTE	RESTRICTIONS	DESCEND	CLEARANCE LIMIT
DEKEB 1S (DEKEB ONE SIERRA ARRIVAL)	From DEKEB, to IRGAD, to ETSER, to KOXOL.	Cross DEKEB at or above 7000 FT. Cross IRGAD at or above 7000 FT. Cross ETSER at or above 4000 FT. Cross KOXOL at or above 4000 FT.	As cleared by ATC.	KOXOL
OBITI 2S (OBITI TWO SIERRA ARRIVAL)	From OBITI, to ARNEN, to UVRON, to VAVOP, to KB603 to LUGEK	Cross OBITI at or above FL 140. Cross ARNEN at or above 10 000 FT. Cross UVRON at or above 7000 FT Cross KB603 at or above 7000 FT. Cross LUGEK at or above 4500 FT.	As cleared by ATC.	LUGEK
TUMIM 2S (TUMIM TWO SIERRA ARRIVAL)	From TUMIM, to KB605, to BUGAG, to UVRON, to VAVOP, to KB603 to LUGEK.	Cross TUMIM at or above FL 140. Cross KB605 at or above FL 100. Cross BUGAG at or above 7000 FT. Cross UVRON at or above 7000 FT Cross KB603 at or above 7000 FT. Cross LUGEK at or above 4500 FT.	As cleared by ATC.	LUGEK
VEPUL 2S (VEPUL TWO SIERRA ARRIVAL)	From VEPUL, to SUMIP, to KB604 to LUGEK.	Cross VEPUL at or above FL 140. Cross SUMIP at or above 10 000 FT. Cross KB604 at or above 7000 FT. Cross LUGEK at or above 4500 FT.	As cleared by ATC.	LUGEK