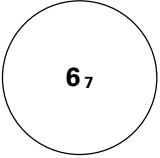
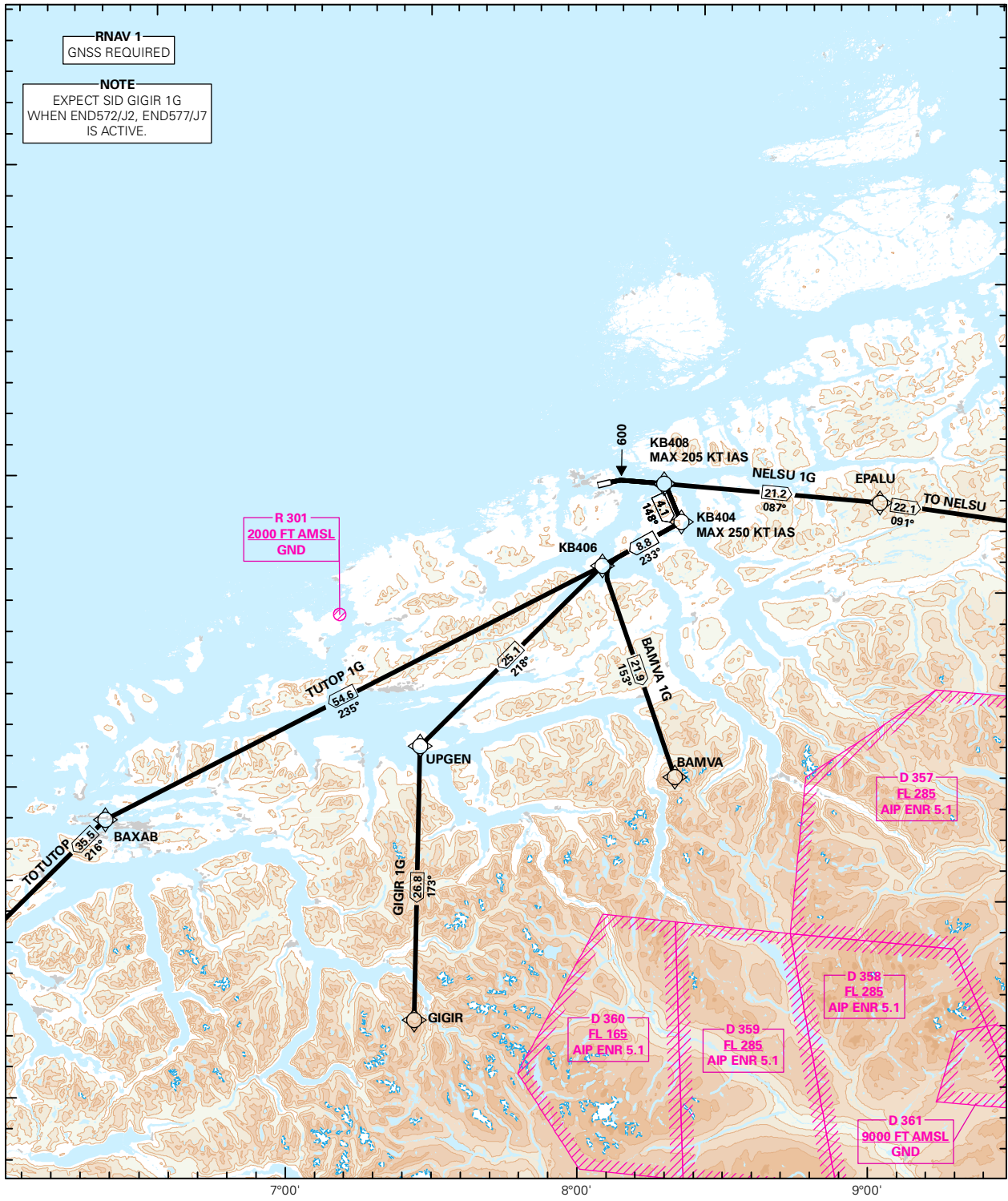


STANDARD DEPARTURE CHART INSTRUMENT (RNAV 1 SID BASED ON GNSS)

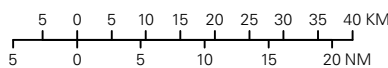
 <p>MSA 25 NM ARP</p>	ATIS: 135.075 APP: 119.350 TWR: 118.300 VDF: 118.300 119.350	ALT AND ELEV ARE IN FT DIST IN NM			KRISTIANSUND KVERNBERGET RWY 07 NORWAY BAMVA 1G, GIGIR 1G, NELSU 1G, TUTOP 1G
	1:1 100 000 VAR: 1.4 ° E (2015) TA 7000				



CHANGES: NOTEBOX AMENDED, EDITORIALS.

SID DESCRIPTION OVERLEAF
DESCRIPTION OF WAYPOINTS, REF ENR 4.4

ATS AIRSPACE CLASSIFICATIONS: REF ENR 1.4
LEGEND: REF GEN 2.3



**STANDARD DEPARTURE ROUTES - INSTRUMENT
(RNAV 1 SID BASED ON GNSS)**
**KRISTIANSUND/Kvernberget
RWY 07**

GENERAL:	Class A GNSS shall not be used. Surveillance service shall be available.
RADIO COMMUNICATION FAILURE:	Squawk A7600. Maintain last assigned LVL until passing limits as described in "CLIMB TO" table for each individual SID, then climb to CPL cruising LVL. Aircraft under vectoring shall, after set transponder to A7600, proceed in the most direct manner possible to rejoin the CPL route no later than the next significant point, climbing to the CPL cruising LVL taking into consideration the applicable MNM flight ALT.
VECTORING/ DIRECT ROUTING:	When being vectored or cleared for DCT routing, the climb gradient(s) stated in SID "RESTRICTIONS"-table apply.
NON RNAV 1 ACFT:	At first contact with "KVERNBERGET TWR" state "UNABLE RNAV 1 DUE (reason)". OMNI-DIRECTIONAL DEPARTURE available (see ENKB AD 2.24).
ATC CLEARANCE:	Departing IFR flights shall obtain ATC clearance from "KVERNBERGET TWR".

DESIGNATOR	ROUTE	RESTRICTIONS	CLIMB TO	CONTACT
BAMVA 1G (BAMVA ONE GOLF DEPARTURE)	Climb on course 070° to 600 FT, turn right DCT KB408, to KB404, to KB406, to BAMVA.	MNM climb gradient 5.3% (322 FT/NM) to 4000 FT. If unable to comply, inform ATC. MAX 205 KT IAS at KB408. MAX 250 KT IAS at KB404.	6000 FT RCF: If no further climb received prior to KB406, climb to CPL cruising LVL.	As instructed by Kvernberget TWR
GIGIR 1G (GIGIR ONE GOLF DEPARTURE)	Climb on course 070° to 600 FT, turn right DCT KB408, to KB404, to KB406, to UPGEN, to GIGIR.	MNM climb gradient 5.3% (322 FT/NM) to 2000 FT. If unable to comply, inform ATC. MAX 205 KT IAS at KB408. MAX 250 KT IAS at KB404.	6000 FT RCF: If no further climb received prior to KB406, climb to CPL cruising LVL.	As instructed by Kvernberget TWR
NELSU 1G (NELSU ONE GOLF DEPARTURE)	Climb on course 070° to 600 FT, turn right DCT KB408, to EPALU, to NELSU.	MNM climb gradient 5.0% (304 FT/NM) to 2000 FT. If unable to comply, inform ATC. MAX 205 KT IAS at KB408.	6000 FT RCF: If no further climb received 7 NM prior to EPALU, climb to CPL cruising LVL.	As instructed by Kvernberget TWR
TUTOP 1G (TUTOP ONE GOLF DEPARTURE)	Climb on course 070° to 600 FT, turn right DCT KB408, to KB404, to KB406, to BAXAB, to TUTOP.	MNM climb gradient 5.3 (322 FT/NM) to 2000 FT. If unable to comply, inform ATC. MAX 205 KT IAS at KB408. MAX 250 KT IAS at KB404.	6000 FT RCF: If no further climb received prior to KB406 FT, climb to CPL cruising LVL.	As instructed by Kvernberget TWR