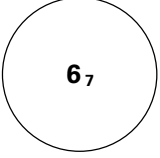
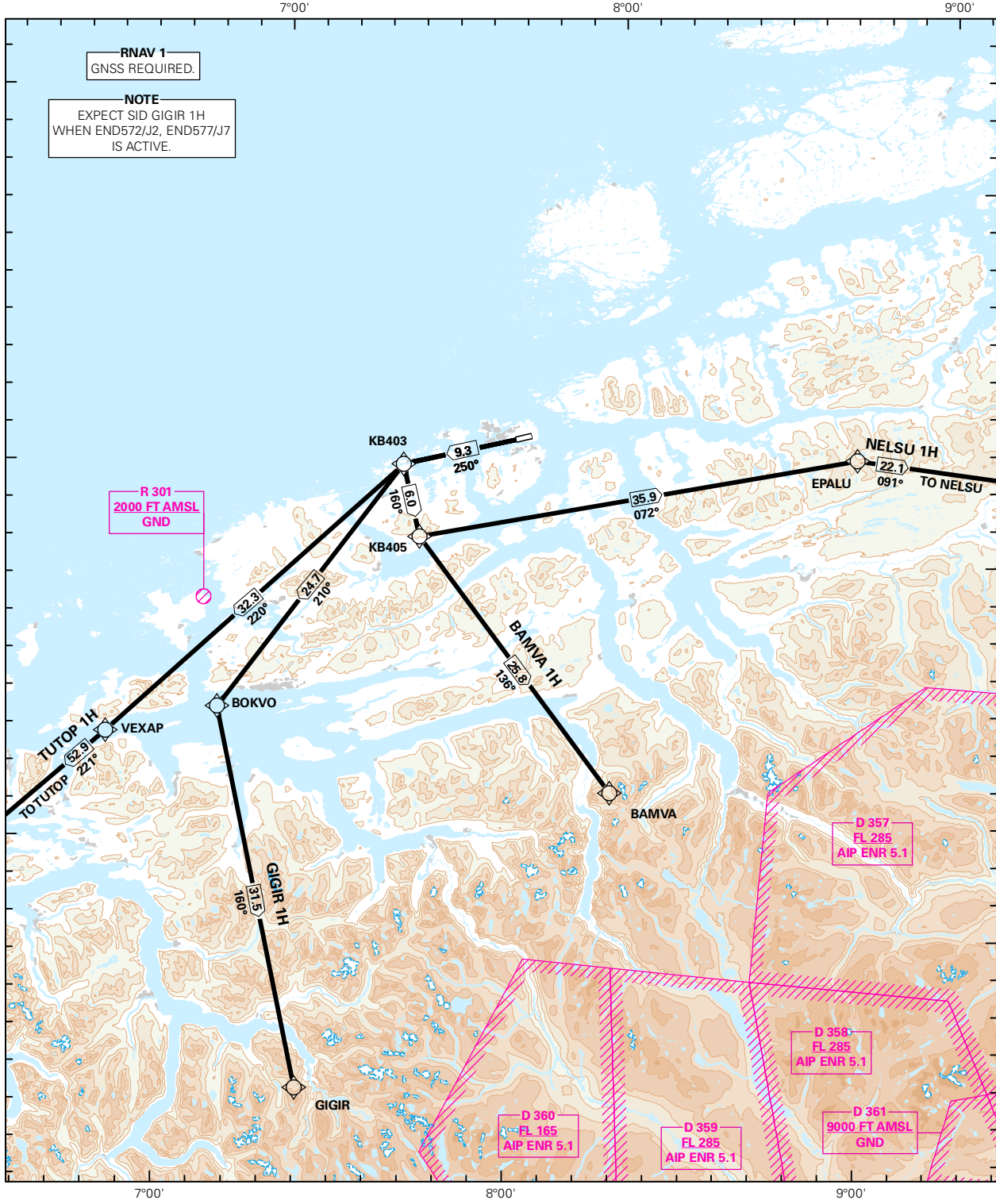


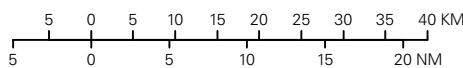
STANDARD DEPARTURE CHART INSTRUMENT (RNAV 1 SID BASED ON GNSS)

 <p>MSA 25 NM ARP</p>	ATIS: 135.075	ALT AND ELEV ARE IN FT DIST IN NM		<b>KRISTIANSUND KVERNBERGET RWY 25 NORWAY</b>  <b>BAMVA 1H, GIGIR 1H, NELSU 1H, TUTOP 1H</b>
	APP: 119.350			
	TWR: 118.300			
	VDF: 118.300 119.350			
	1:900 000	VAR: 1.4 ° E (2015)	TA 7000	



SID DESCRIPTION OVERLEAF  
DESCRIPTION OF WAYPOINTS, REF ENR 4.4

ATS AIRSPACE CLASSIFICATIONS: REF ENR 1.4  
LEGEND: REF GEN 2.3



CHANGES: NOTEBOX AMENDED, EDITORIALS.

**STANDARD DEPARTURE ROUTES - INSTRUMENT  
(RNAV 1 SID BASED ON GNSS)****KRISTIANSUND/Kvernberget  
RWY 25**

<b>GENERAL:</b>	Class A GNSS shall not be used. Surveillance service shall be available.
<b>RADIO COMMUNICATION FAILURE:</b>	Squawk A7600. Maintain last assigned LVL until passing limits as described in "CLIMB TO" table for each individual SID, then climb to CPL cruising LVL. Aircraft under vectoring shall, after set transponder to A7600, proceed in the most direct manner possible to rejoin the CPL route no later than the next significant point, climbing to the CPL cruising LVL taking into consideration the applicable MNM flight ALT.
<b>CLOSE-IN OBSTACLES:</b>	Rising terrain and obstacles, up to 0.3 NM from THR 07, require more than 6.0% climb gradient, and must be avoided visually or by other means.
<b>VECTORING/ DIRECT ROUTING:</b>	When being vectored or cleared for DCT routing, the climb gradient(s) stated in SID "RESTRICTIONS"-table apply.
<b>NON RNAV 1 ACFT:</b>	At first contact with KVERNBERGET TWR state "UNABLE RNAV 1 DUE (reason)". OMNI-DIRECTIONAL DEPARTURE available (see ENKB AD 2.24)
<b>ATC CLEARANCE:</b>	Departing IFR flights shall obtain ATC clearance from "KVERNBERGET TWR".

DESIGNATOR	ROUTE	RESTRICTIONS	CLIMB TO	CONTACT
<b>BAMVA 1H</b> (BAMVA ONE HOTEL DEPARTURE)	To KB403 on course 250°, to KB405, to BAMVA.	MNM climb gradient 6.0% (365 FT/NM) to 4000 FT.  If unable to comply, inform ATC.	6000 FT  RCF: If no further climb received 15 NM prior to BAMVA, climb to CPL cruising LVL.	As instructed by Kvernberget TWR
<b>GIGIR 1H</b> (GIGIR ONE HOTEL DEPARTURE)	To KB403 on course 250°, to BOKVO, to GIGIR.	MNM climb gradient 4.0% (243 FT/NM) to 2500 FT.  If unable to comply, inform ATC	6000 FT  RCF: If no further climb received prior to BOKVO, climb to CPL cruising LVL.	As instructed by Kvernberget TWR
<b>NELSU 1H</b> (NELSU ONE HOTEL DEPARTURE)	To KB403 on course 250°, to KB405, to EPALU, to NELSU.	MNM climb gradient 6.0% (365 FT/NM) to 4000 FT.  If unable to comply, inform ATC.	6000 FT  RCF: If no further climb received prior to EPALU, climb to CPL cruising LVL.	As instructed by Kvernberget TWR
<b>TUTOP 1H</b> (TUTOP ONE HOTEL DEPARTURE)	To KB403 on course 250°, to VEXAP, to TUTOP.	MNM climb gradient 4.0% (243 FT/NM) to 2500 FT.  If unable to comply, inform ATC.	6000 FT  RCF: If no further climb received prior to VEXAP, climb to CPL cruising LVL.	As instructed by Kvernberget TWR