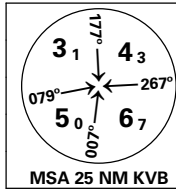


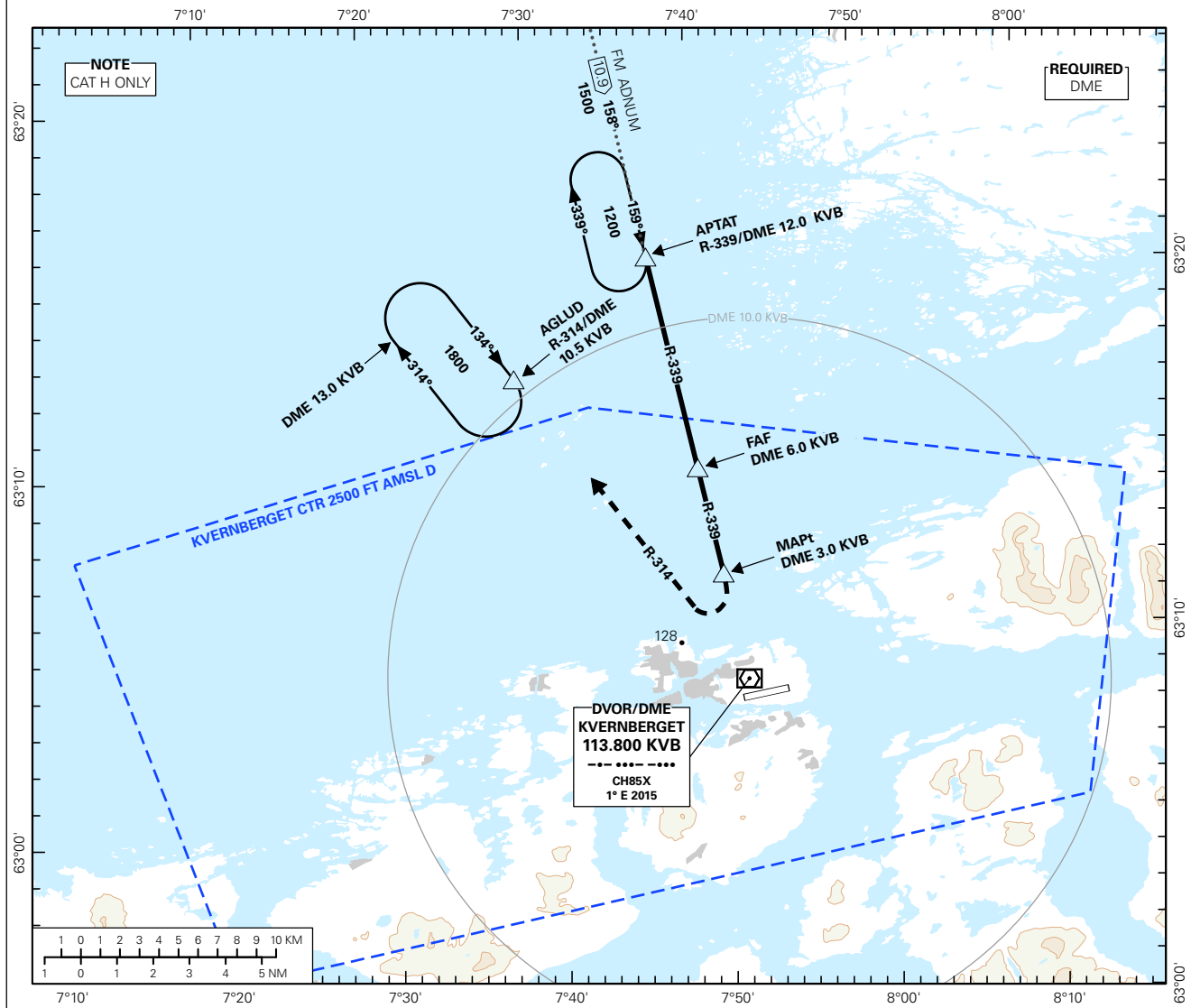
INSTRUMENT APPROACH CHART - ICAO PLAN VIEW SCALE: 1:350 000

**KRISTIANSUND
KVERNBERGET
VOR-A**



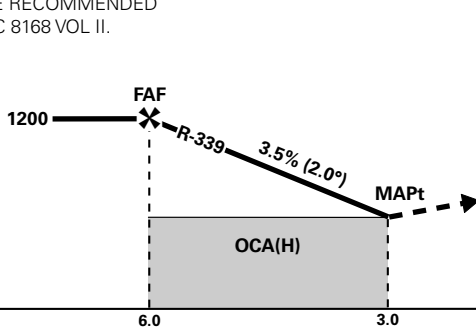
ATIS: 135.075	AERODROME ELEVATION: 205 FT	
APP: 119.350	THR ELEVATION: 180 FT	DIST IN NM
TWR: 118.300	HGT RELATED TO THR RWY 07	ELEV, ALT AND HGT IN FT
VDF: 118.300 119.350	CIRCLING HGT RELATED TO AD ELEV	
BEARINGS ARE MAGNETIC - VAR 1.4 ° E (2015)		

**TRANSITION ALTITUDE
7000**



DIST TO KVB	11	10	9	8	7	6	5	4
ALT (HGT)	-	-	-	-	-	1200 (995)	990 (785)	780 (575)

NOTE:
VPA LESS THAN THE RECOMMENDED VALUE IN ICAO DOC 8168 VOL II.



**KVB
DVOR/DME**

MISSED APCH:
AT DME 3.0 KVB TURN RIGHT TO INTERCEPT AND PROCEED ON R-314 KVB TO AGLUD. ENTER AGLUD HOLDING AT 1800.

CAT OF ACFT	H	-	-	-	FINAL APPROACH	DIST FM FAF - MAPt: 3.0 NM					
	OCA(H) STRAIGHT - IN	-	-	-		SPEED	KT	60	70	80	90
CIRCLING	560 (355)	-	-	-	TIME	MIN:SEC	03:00	02:35	02:15	02:00	01:48
		-	-	-	ROD	FT/MIN	215	250	285	325	360

NOTE: VISUAL MANOEUVRING REQUIRED TO LAND. CAT H ONLY.

CHANGES: MAGNETIC VARIATION, EDITORIALS.

THIS PAGE INTENTIONALLY LEFT BLANK