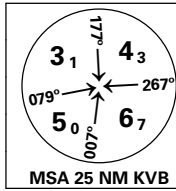
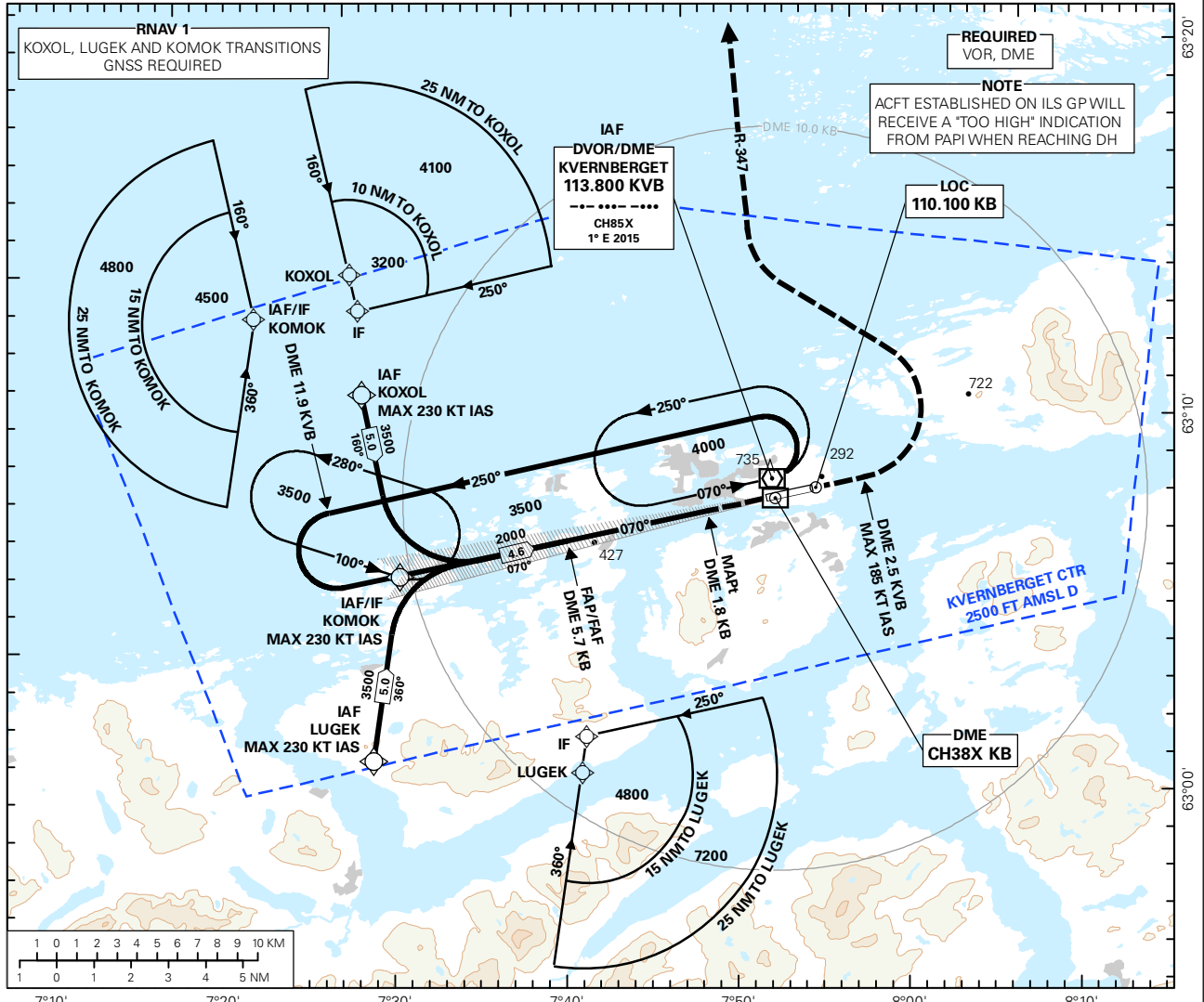


**INSTRUMENT APPROACH CHART - ICAO PLAN VIEW SCALE: 1:350 000**

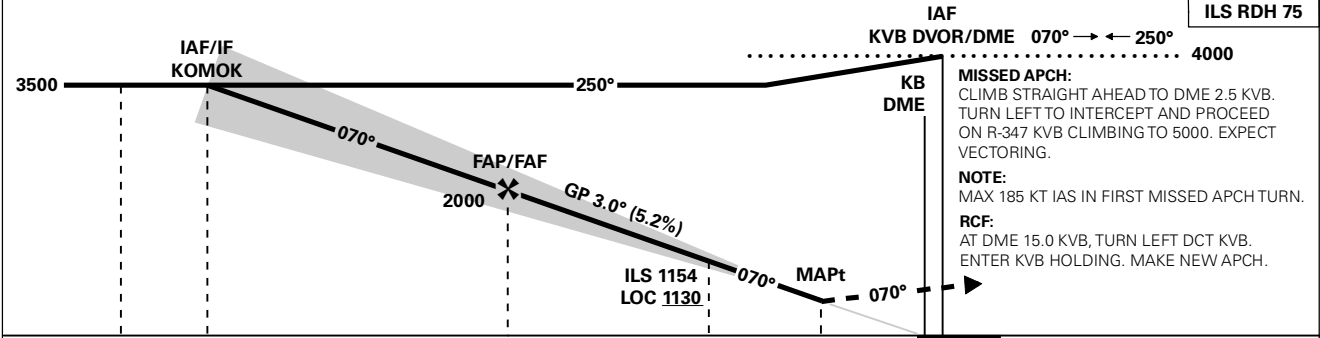
**KRISTIANSUND  
KVERNBERGET  
ILS Z or LOC Z RWY 07**  
TRANSITION ALTITUDE  
**7000**



ATIS: 135.075	AD ELEV: 205	
APP: 119.350	THR ELEV: 180	DIST IN NM
TWR: 118.300	HGT RELATED TO THR RWY 07	ELEV, ALT AND HGT IN FT
VDF: 118.300 119.350	CIRCLING HGT RELATED TO AD ELEV	
BEARINGS ARE MAGNETIC - VAR 1.4 ° E (2015)		



DIST TO KB	9	8	7	6	5	4	3	2
ALT (HGT)	-	-	-	-	1790 (1610)	1460 (1280)	1130 (950)	820 (640)



11.9	10.3	5.7	3.0	1.8	0	0
10.1	5.5	2.8	1.6	0	0	0

CAT OF ACFT	A	B	C	D	FINAL APCH	DIST FM FAF - MAPt: 3.9					
	482 (302)	497 (317)	516 (336)	538 (358)		SPEED	KT	70	90	120	150
STRAIGHT - IN	730 (550)				TIME	MIN:SEC	3:21	2:36	1:57	1:34	1:18
CIRCLING	1070 (865)	1470 (1265)	2510 (2305)		ROD	FT/MIN	380	485	650	810	970
CIRCLING N of AD	1040 (835)		1130 (925)	1520 (1315)							

NOTE:

Avinor

03 MAR 2016

CHANGES: KOMOK.