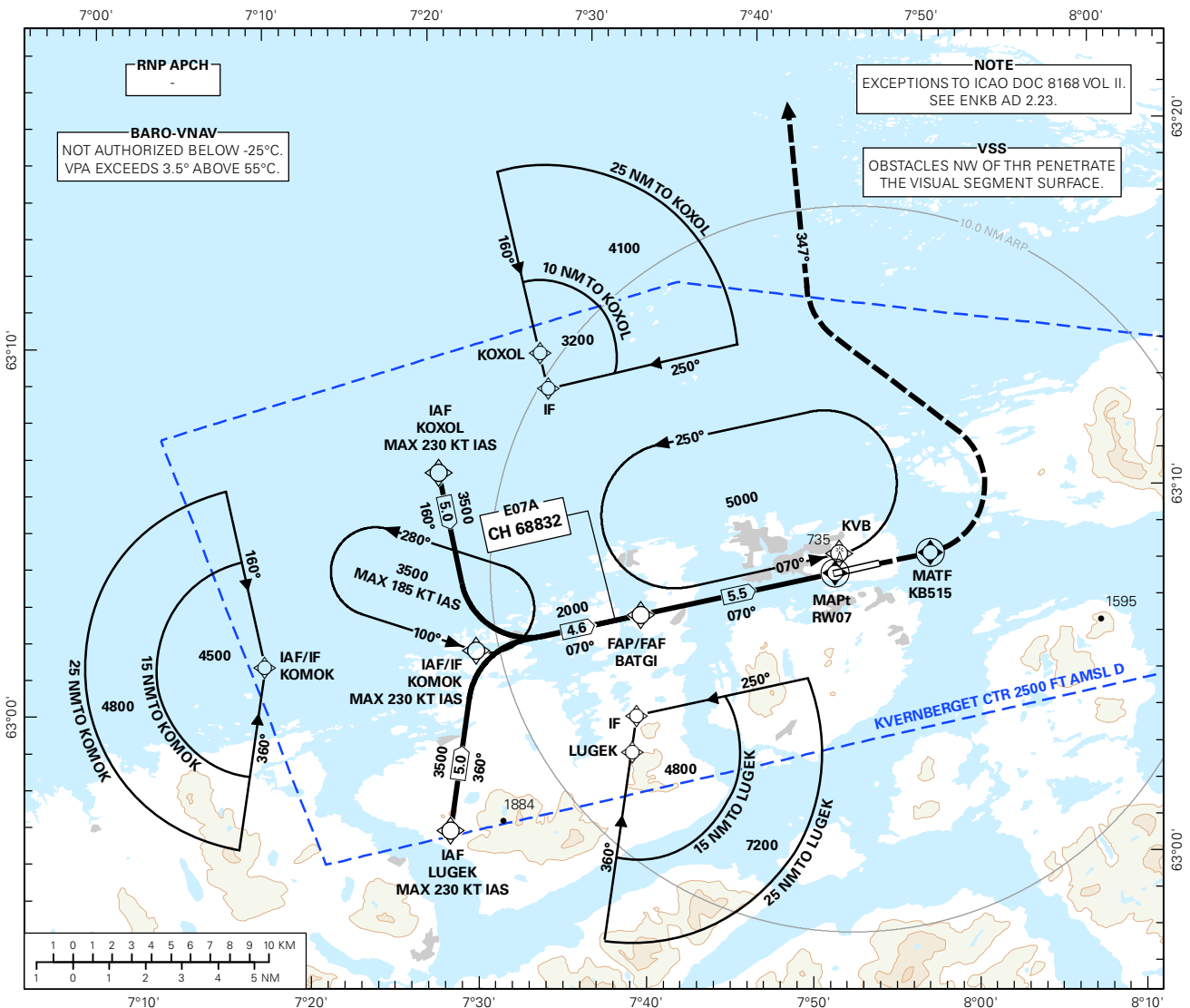


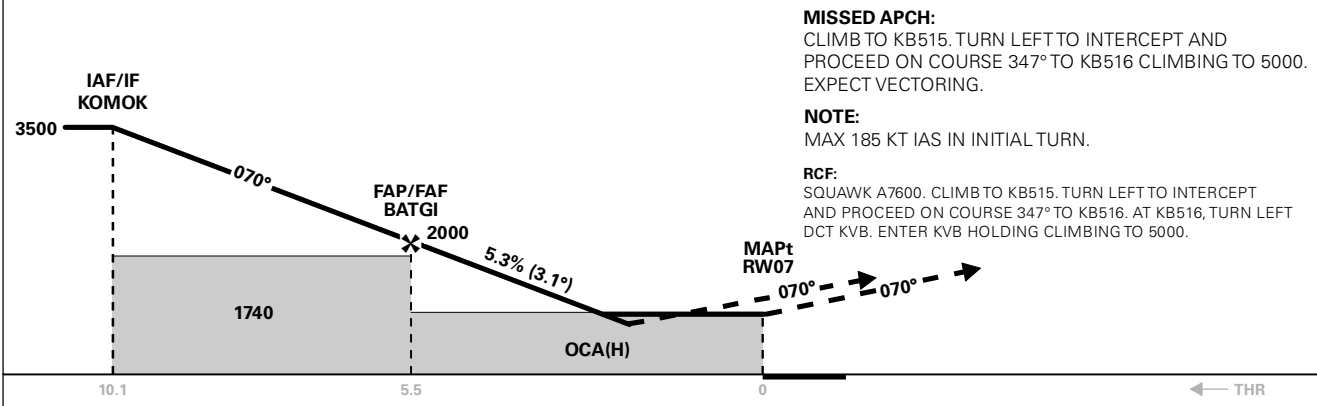
INSTRUMENT APPROACH CHART - ICAO PLAN VIEW SCALE: 1:350 000

ATIS: 135.075	AD ELEV: 205		
APP: 119.350	THR ELEV: 180	DIST IN NM	
TWR: 118.300	HGT RELATED TO THR RWY 07	ELEV, ALT AND HGT IN FT	
VDF: 118.300 119.350	CIRCLING HGT RELATED TO AD ELEV		
	BEARINGS ARE MAGNETIC - VAR 1.4 ° E (2015)		

**KRISTIANSUND
KVERNBERGET
RNAV(GNSS) RWY 07
TRANSITION ALTITUDE
7000**



DIST TO RWY07	9	8	7	6	5	4	3	2
ALT (HGT)	-	-	-	-	1850 (1670)	1530 (1350)	1210 (1030)	880 (700)



CAT OF ACFT		A	B	C	D	FINAL APCH	DIST FAF - MAPt: 5.5					
OCA(H) STRAIGHT - IN	LPV	760 (580)	770 (590)	780 (600)	790 (610)							
	LNAV/VNAV	870 (690)	880 (700)	890 (710)	900 (720)							
	LNAV	990 (810)				SPEED	KT	70	90	120	150	180
CIRCLING		1070 (865)	1470 (1265)	2510 (2305)		TIME	MIN:SEC	04:42	03:39	02:45	02:12	01:50
CIRCLING N OF AD		1040 (835)		1130 (925)	1520 (1315)	ROD	FT/MIN	380	485	650	810	970

CHANGES: LPV MINIMA

RECOMMENDED RNAV PROCEDURE CODING

ENKB RNAV(GNSS) RWY 07										
Serial Number	Path Descriptor	Waypoint Identifier	Fly-over	Course °M(°T)	MAG VAR	DIST (NM)	Turn Dir	ALT (FT)	Speed (KT)	VPA/TCH
010	IF	KOXOL	-	-	-	-	-	A4000+	K230-	-
020	TF	KOMOK	-	160 (161.3)	-	5.0	-	A3500+	K230-	-
010	IF	LUGEK	-	-	-	-	-	A4500+	K230-	-
020	TF	KOMOK	-	360 (001.3)	-	5.0	-	A3500+	K230-	-
030	TF	BATGI	-	070 (071.1)	-	4.6	-	A2000+	-	-
040	TF	RW07	Y	070 (071.2)	-	5.5	-	-	-	-
050	TF	KB515	Y	070 (071.4)	-	2.7	-	-	-	-
060	CF	KB516	-	347 (348.0)	-	-	L	A5000	K185-	-

Note: Recommended RNAV procedure coding is based on ARINC 424-15 and is provided solely to indicate which procedure design protection areas were used in the Instrument Flight Procedure Design process.

Note: Published OCA(H) values are obstacle clearance values. Decision heights (DH) below 250 FT shall not be used due to APV approach operation Type A limitations.

Note: KOMOK holding not included in standard APCH transitions.

FAS DATA BLOCK

Operation type	0	LTP/FTP ellipsoidal height	98.8
SBAS Provider	1	FPAP latitude	630657.3895N
Airport Identifier	ENKB	FPAP longitude	0075105.9025E
Runway	RW07	Threshold crossing height	15
Approach performance designator	0	TCH units	M
Route Indicator	-	Glide path angle	3.1
Reference path data selector	0	Course width at threshold	105
Reference path Identifier	E07A	Length offset	0
LTP/FTP latitude	630633.5615N	Horizontal alert limit (HAL)	40
LTP/FTP longitude	0074829.7215E	Vertical alert limit (VAL)	50
	PRECISION APPROACH PATH CRC REMAINDER		94D98E1B

NON FAS DATA BLOCK FIELDS

LTP Ortometric Height	54.9
FPAP Ortometric Height	54.9