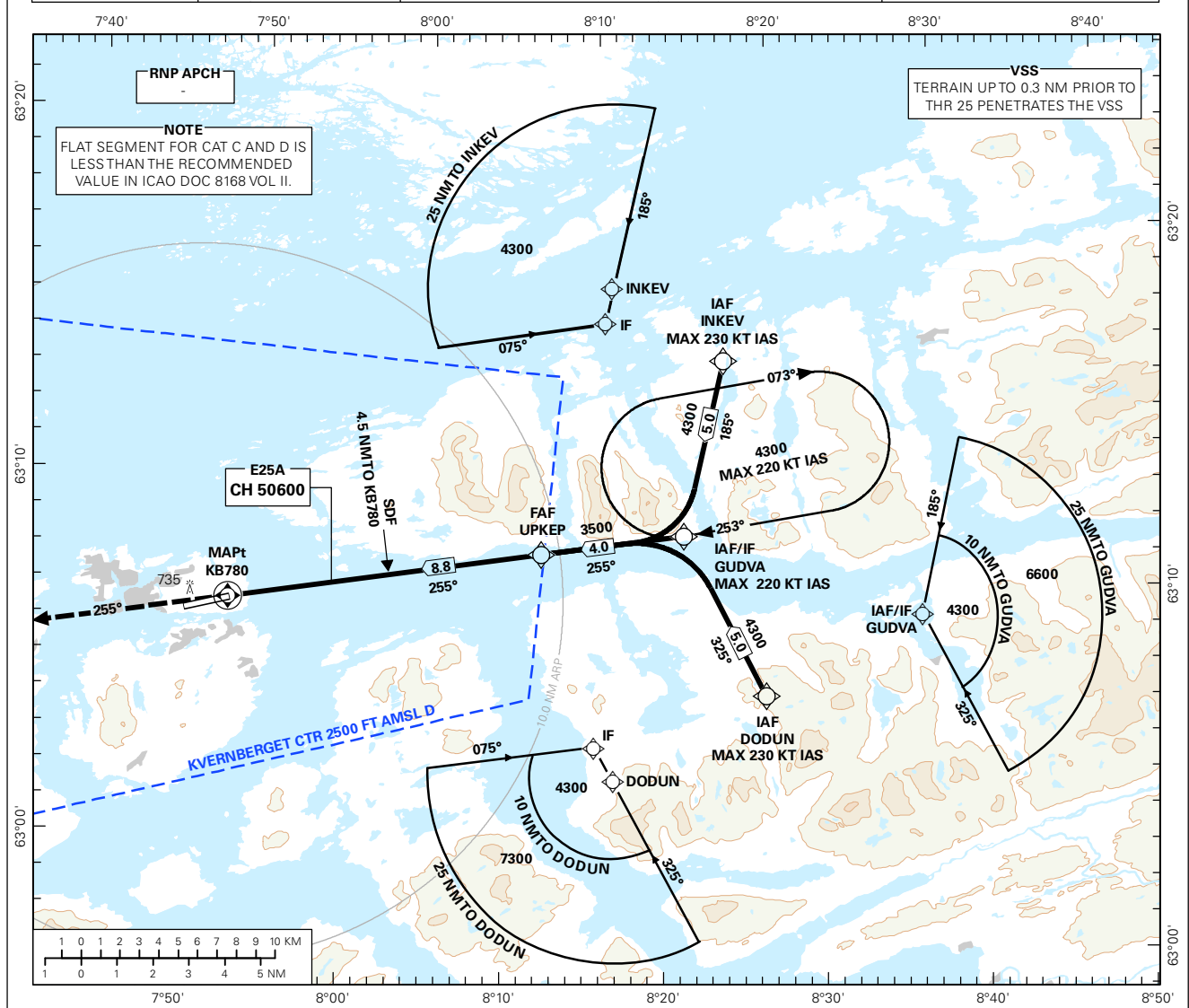


**INSTRUMENT APPROACH CHART - ICAO PLAN VIEW SCALE: 1:350 000**

ATIS: 135.075	AD ELEV: 205			<b>KRISTIANSUND KVERNBERGET RNAV(GNSS) RWY 25</b>  TRANSITION ALTITUDE 7000
APP: 119.350	THR ELEV: 184	DIST IN NM		
TWR: 118.300	HGT RELATED TO THR RWY 25	ELEV, ALT AND HGT IN FT		
VDF: 118.300 119.350	CIRCLING HGT RELATED TO AD ELEV			
BEARINGS ARE MAGNETIC - VAR 1.4 ° E (2015)				



DIST TO KB780	9	8	7	6	5	4	3	2
ALT (HGT)	-	3210 (3026)	2840 (2656)	2470 (2286)	2100 (1916)	1730 (1546)	1350 (1166)	980 (796)

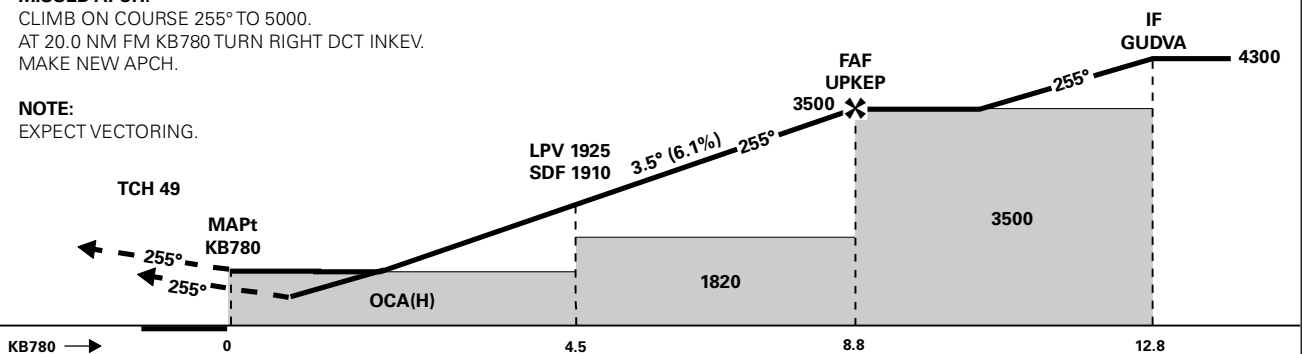
PROCEDURE OFFSET: 5°

**MISSED APCH:**

CLIMB ON COURSE 255° TO 5000.  
AT 20.0 NM FM KB780 TURN RIGHT DCT INKEV.  
MAKE NEW APCH.

**NOTE:**

EXPECT VECTORING.



CAT OF ACFT		A	B	C	D	FINAL APCH SPEED	DIST FAF - MAPt: 8.8				
		OCA(H)	OCA(H)	OCA(H)	OCA(H)		KT	MIN:SEC	MIN:SEC	MIN:SEC	MIN:SEC
STRAIGHT - IN	LPV 2.5%	700 (516)	710 (526)	720 (536)	740 (556)	70	07:33	05:52	04:24	03:31	02:56
	LPV 3.0%	670 (486)	690 (510)	700 (516)	710 (526)						
	LPV 4.0%	630 (446)	650 (466)	660 (476)	670 (486)						
CIRCLING	LPV 5.0%	600 (416)	610 (426)	630 (446)	640 (456)	90	07:33	05:52	04:24	03:31	02:56
	LNAV 2.5%	810 (626)	830 (646)	860 (676)	890 (706)						
CIRCLING N OF AD ONLY		1040 (835)		1130 (925)	1520 (1315)	120	07:33	05:52	04:24	03:31	02:56
CIRCLING N OF AD ONLY		1040 (835)		1130 (925)	1520 (1315)	150	07:33	05:52	04:24	03:31	02:56
CIRCLING N OF AD ONLY		1040 (835)		1130 (925)	1520 (1315)	180	07:33	05:52	04:24	03:31	02:56

NOTE: -

CHANGES: COMPLETE REVISION, LPV.

## RECOMMENDED RNAV PROCEDURE CODING

ENKB RNAV(GNSS) RWY 25										
Serial Number	Path Descriptor	Waypoint Identifier	Fly-over	Course °M(°T)	MAG VAR	DIST (NM)	Turn Dir	ALT (FT)	Speed (KT)	VPA/TCH
010	IF	INKEV	-	-	-	-	-	A4300+	K230-	-
020	TF	GUDVA	-	185 (186.6)	-	5.0	-	A4300+	K220-	-
010	IF	DODUN	-	-	-	-	-	A4300+	K230-	-
020	TF	GUDVA	-	325 (326.7)	-	5.0	-	A4300+	K220-	-
010	IF	GUDVA	-	-	-	-	-	A4300+	K220-	-
020	TF	UPKEP	-	255 (256.7)	-	4.0	-	A3500+	-	-
030	TF	KB780	Y	255 (256.6)	-	8.8	-	-	-	-3,5/15
040	FD	KB780	Y	255 (256.6)	-	20.0	-	A5000-	-	-
050	DF	INKEV	-	-	-	-	R	A5000	-	-

Note: Recommended RNAV procedure coding is based on ARINC 424-15 and is provided solely to indicate which procedure design protection areas were used in the Instrument Flight Procedure Design process.

Note: Published OCA(H) values are obstacle clearance values. Decision heights (DH) below 250 FT shall not be used due to APV approach operation Type A limitations.

Note: GUDVA holding not included in standard APCH transitions.

## FAS DATA BLOCK

Operation type	0	LTP/FTP ellipsoidal height	100.1
SBAS Provider	1	FPAP latitude	630640.5925N
Airport Identifier	ENKB	FPAP longitude	0074819.1325E
Runway	RW25	Threshold crossing height	15
Approach performance designator	0	TCH units	M
Route Indicator	-	Glide path angle	3.5
Reference path data selector	0	Course width at threshold	105
Reference path Identifier	E25A	Length offset	0
LTP/FTP latitude	630658.3990N	Horizontal alert limit (HAL)	40
LTP/FTP longitude	0075100.0600E	Vertical alert limit (VAL)	50
	PRECISION APPROACH PATH CRC REMAINDER		F469A790

## NON FAS DATA BLOCK FIELDS

LTP Ortometric Height	56.2
FPAP Ortometric Height	56.2