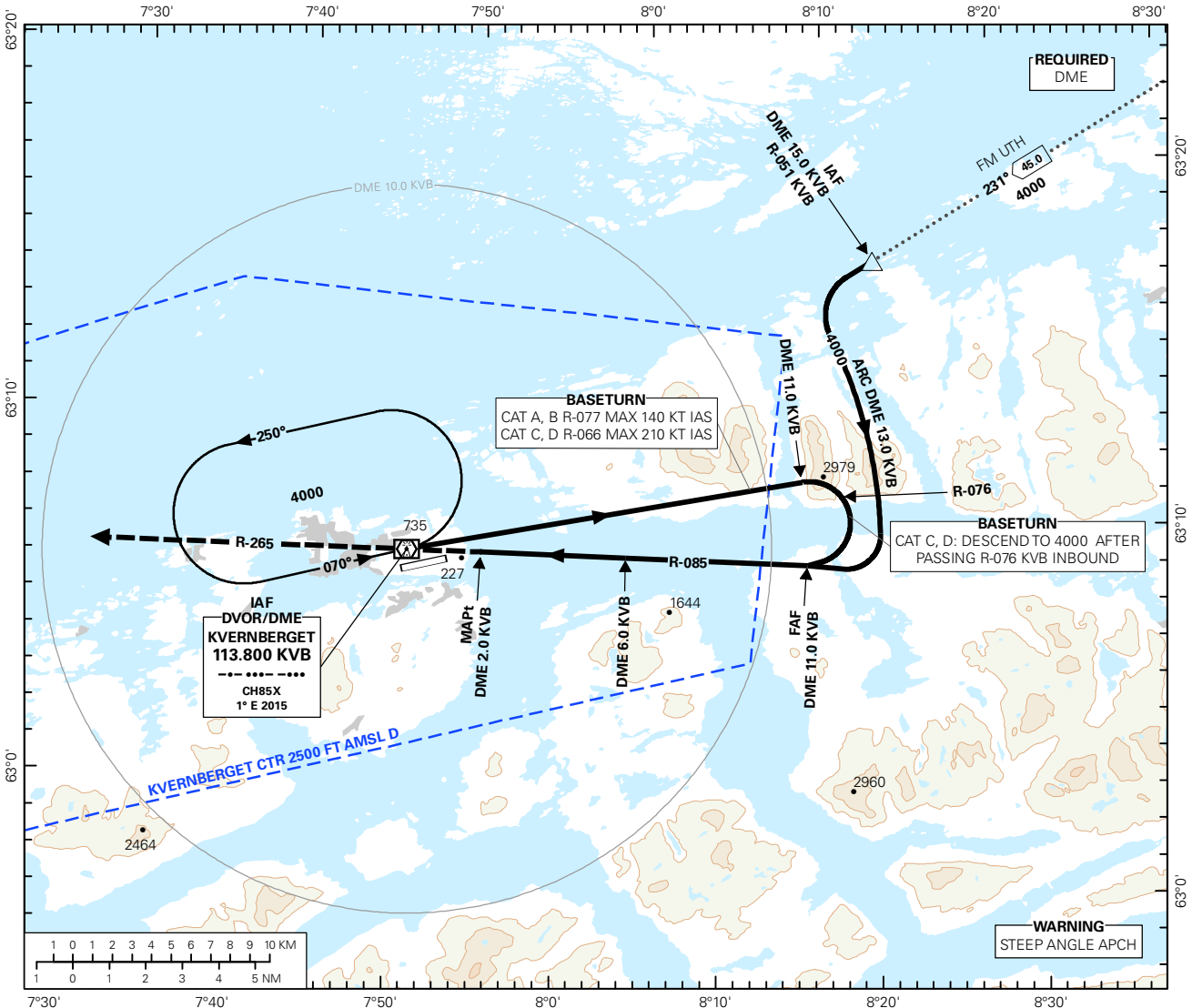


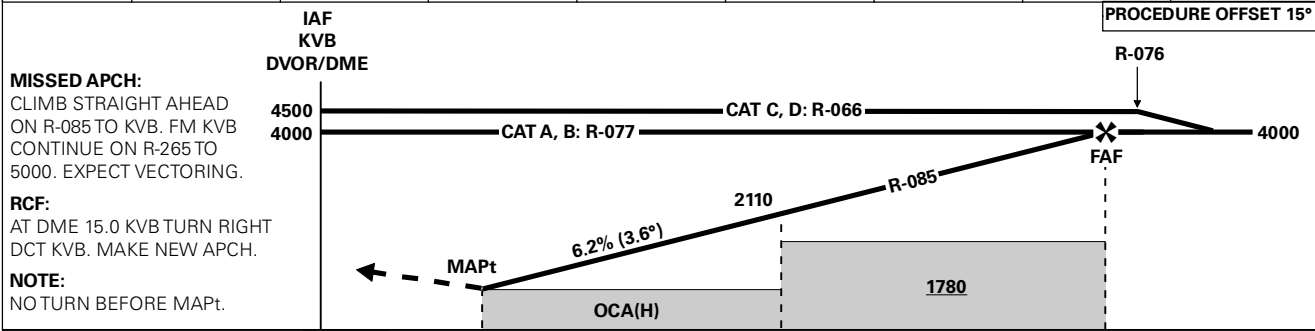
INSTRUMENT APPROACH CHART - ICAO PLAN VIEW SCALE: 1:350 000

**KRISTIANSUND
KVERNBERGET
VOR Z RWY 25**
TRANSITION ALTITUDE
7000

<p>MSA 25 NM KVB</p>	ATIS: 135.075	AERODROME ELEVATION: 205 FT	
	APP: 119.350	THR ELEVATION: 184 FT	DIST IN NM
	TWR: 118.300	HGT RELATED TO THR RWY 25	ELEV, ALT AND HGT IN FT
	VDF: 118.300 119.350	CIRCLING HGT RELATED TO AD ELEV	
	BEARINGS ARE MAGNETIC - VAR 1.4 ° E (2015)		



DIST TO KVB	10	9	8	7	6	5	4	3
ALT (HGT)	3630 (3446)	3250 (3066)	2870 (2686)	2490 (2306)	2110 (1926)	1730 (1546)	1360 (1176)	980 (796)



DME (KVB) →	0	2.0	6.0	11.0
THR (NM) →	0	0.95	4.9	9.9

CAT OF ACFT	A	B	C	D	FINAL APPROACH	DIST FM FAF - MAPt: 9.0 NM					
						KT	MIN:SEC	FT/MIN	380	565	755
OCA(H) STRAIGHT - IN	2.5%*	660 (476)	690 (506)	710 (526)	730 (546)	SPEED	60	90	120	150	180
	3.5%*	610 (426)	630 (446)	660 (476)	690 (506)	TIME	09:00	06:00	04:30	03:36	03:00
CIRCLING	1070 (865)	1470 (1265)	2510 (2305)		ROD	380	565	755	945	1130	
CIRCLING N OF AD ONLY	1040 (835)		1130 (925)	1520 (1315)							

NOTE: *MNM MISSED APCH CLIMB GRADIENT.

CHANGES: MAGNETIC VARIATION, EDITORIALS.