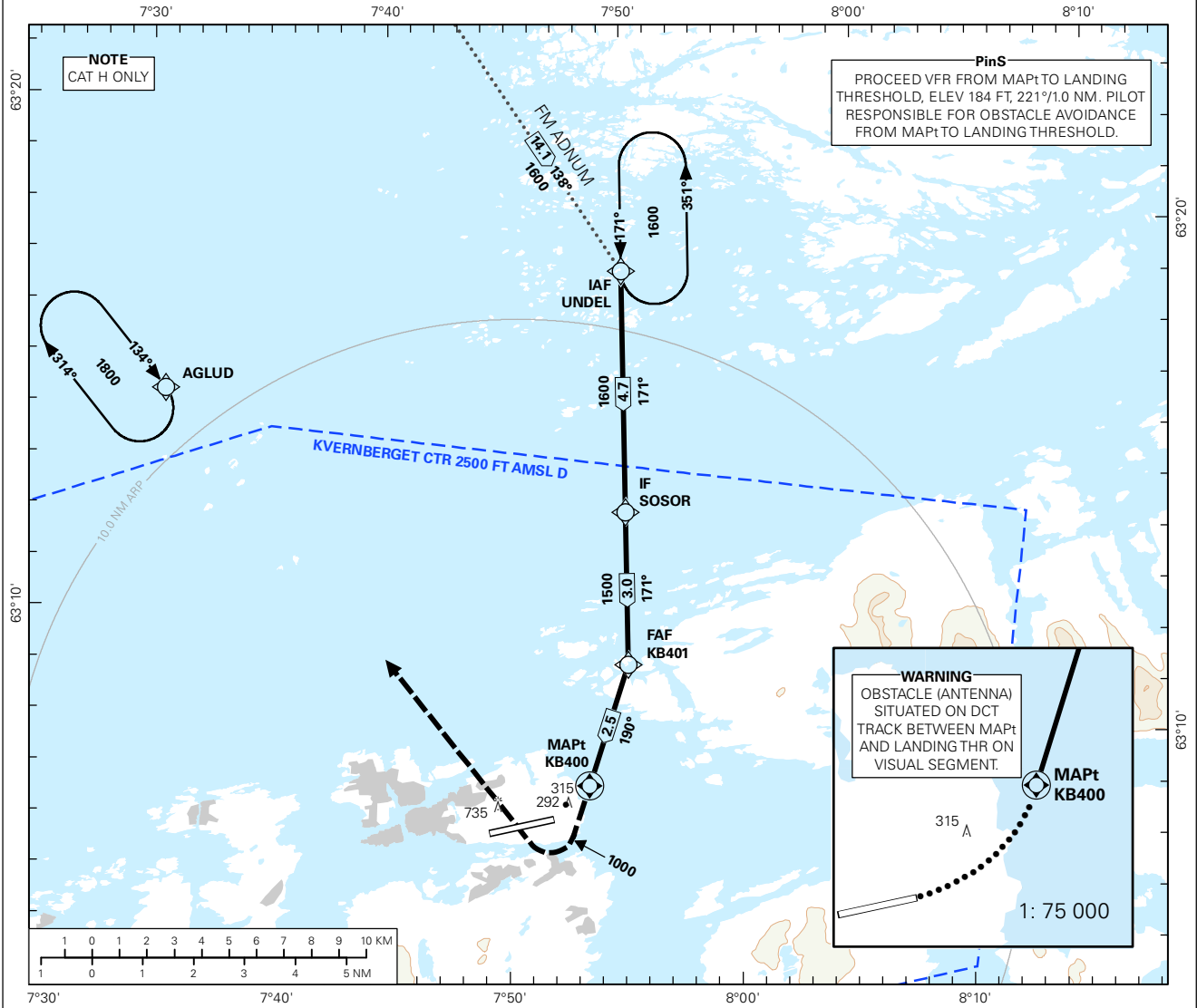


INSTRUMENT APPROACH CHART - ICAO PLAN VIEW SCALE: 1:250 000

<div style="border: 1px solid black; border-radius: 50%; width: 40px; height: 40px; margin: 0 auto; display: flex; align-items: center; justify-content: center;"> 67 </div> <p style="text-align: center; margin-top: 5px;">MSA 25 NM ARP</p>	ATIS: 135.075	AD ELEV: 205		
	APP: 119.350	THR ELEV: 180	DIST IN NM	
	TWR: 118.300	HGT RELATED TO THR RWY 07	ELEV, ALT AND HGT IN FT	
	VDF: 118.300 119.350	CIRCLING HGT RELATED TO AD ELEV		
	BEARINGS ARE MAGNETIC - VAR 1.4 ° E (2015)			TRANSITION ALTITUDE 7000

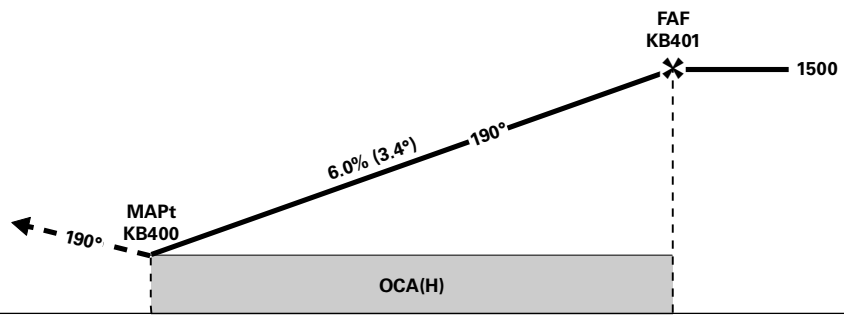
**KRISTIANSUND
KVERNBERGET
RNAV(GNSS) 190**



DIST TO KB400	8	7	6	5	4	3	2	1
ALT (HGT)	-	-	-	-	-	-	1320 (1136)	960 (776)

MISSED APCH:
CLIMB FROM KB400 ON TRACK 190°.
AT 1000 TURN RIGHT DCT AGLUD.
ENTER AGLUD HOLDING AT 1800.

NOTE:
NO TURN BEFORE MAPt.
DESCENT GRADIENT CALCULATED FROM KB401 TO KB400.



KB400 →		0				2.5						
OCA(H)	CAT OF ACFT	A	B	C	D	FINAL APCH	DIST FAF - MAPt: 2.5					
	LNAV 4.2%*	590 (406)	-	-	-	SPEED	KT	60	70	80	90	100
CIRCLING		-	-	-	-	TIME	MIN:SEC	02:30	02:09	01:53	01:40	01:30
		-	-	-	-	ROD	FT/MIN	365	425	485	545	605

NOTE: *MNM MISSED APCH CLIMB GRADIENT. VISUAL MANOEUVRING REQUIRED.

CHANGES: UNDEL HOLDING, INITIAL APCH SEGMENT.

RECOMMENDED RNAV PROCEDURE CODING

ENKB RNAV(GNSS) 190										
Serial Number	Path Descriptor	Waypoint Identifier	Fly-over	Course °M(°T)	MAG VAR	DIST (NM)	Turn Dir	ALT (FT)	Speed (KT)	VPA/TCH
010	IF	UNDEL	-	-	-	-	-	A1600+	-	-
020	TF	SOSOR	-	171 (172.5)	-	4.7	-	A1600+	-	-
030	TF	KB401	-	171 (172.5)	-	3.0	-	A1500+	-	-
040	TF	KB400	Y	190 (191.4)	-	2.5	-	-	-	-
050	FA	KB400	-	190 (191.4)	-	-	-	A1000	-	-
060	DF	AGLUD	-	-	-	-	R	A1800	-	-
070	HM	AGLUD	-	134 (135.0)	-	1 MIN	R	A1800	-	-

Note: Recommended RNAV procedure coding is based on ARINC 424-15 and is provided solely to indicate which procedure design protection areas were used in the Instrument Flight Procedure Design process.