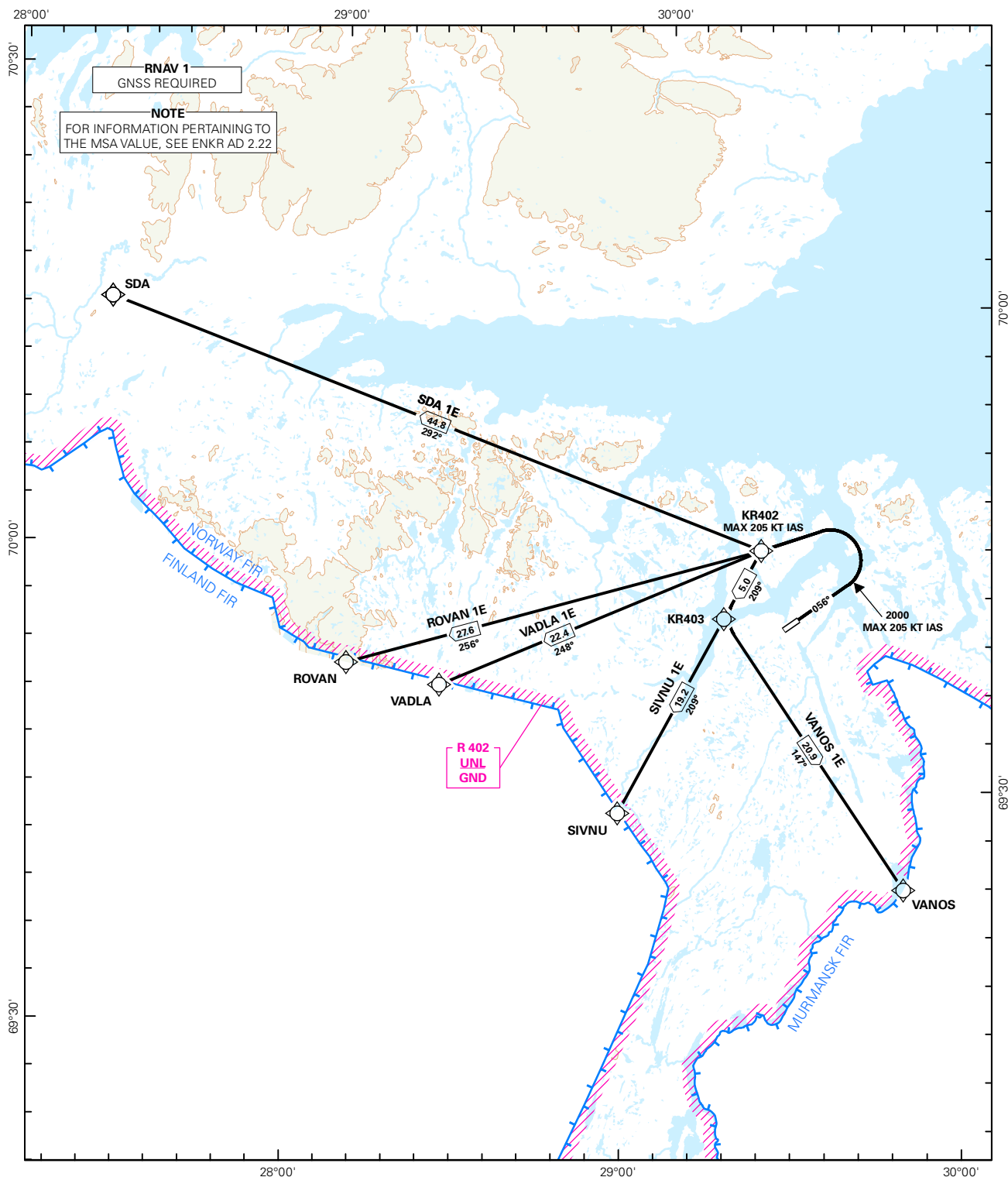


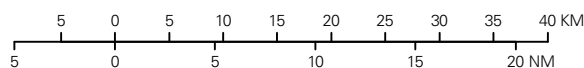
## STANDARD DEPARTURE CHART INSTRUMENT (RNAV 1 SID BASED ON GNSS)

<div><div><div>3<sub>2</sub></div></div><div>MSA 25 NM ARP</div></div>	ATIS: 118.025		ALT AND ELEV ARE IN FT DIST IN NM			KIRKENES/ HØYBUKTMOEN RWY 06 NORWAY
	APP: -					
	TWR: 120.350 118.100 (122.100)					
	VDF: 120.350	1:700 000	VAR: 13.4 ° E (2010)	TA 7000		
ROVAN 1E, SDA 1E, SIVNU 1E, VADLA 1E, VANOS 1E						



SID DESCRIPTION OVERLEAF  
DESCRIPTION OF WAYPOINTS, REF ENR 4.4

ATS AIRSPACE CLASSIFICATIONS: REF ENR 1.4  
LEGEND: REF GEN 2.3



CHANGES: SOXIL 1E REPLACED BY SDA 1E.

**STANDARD DEPARTURE ROUTES -INSTRUMENT  
(RNAV 1 BASED ON GNSS)**
**KIRKENES/Høybukthøen  
RWY 06**

<b>GENERAL:</b>	Class A GNSS shall not be used. Surveillance service shall be available.
<b>RADIO COMMUNICATION FAILURE:</b>	Squawk A7600. In case of RCF after take-off, ACFT shall maintain last assigned level for 2 minutes ( <i>or until described point/distance</i> ), then climb to cruising level stated in CPL. ACFT under vectoring shall, after set transponder to A7600, continue on heading last cleared and acknowledged for 2 minutes, then proceed the most direct route to join the cleared ATS-route and climb to the cruising level stated in the CPL.
<b>VECTORIZING:</b>	Vectors deviating from SID may be used to expedite outbound TFC. A MNM climb gradient of 6.5% i.e. 395 FT/NM is required up to 3000 FT.
<b>NON RNAV 1 ACFT:</b>	At first contact with KIRKENES TWR state "UNABLE RNAV 1". OMNI-DIRECTIONAL DEPARTURE available.

DESIGNATOR	ROUTE	RESTRICTIONS	CLIMB TO	CONTACT
<b>ROVAN 1E</b> (ROVAN ONE ECHO DEPARTURE)	Climb on course 056°. At 2000 FT turn left DCT KR402, to ROVAN.	A MNM climb gradient of 6.5% i.e. 395 FT/NM is required up to 3000 FT. If unable to comply, inform ATC. MAX 205 KT IAS during first turn and turn at KR402.	FL 100	As instructed by Kirkenes TWR
<b>SDA 1E</b> (SEIDA ONE ECHO DEPARTURE)	Climb on course 056°. At 2000 FT turn left DCT KR402, to SDA.	A MNM climb gradient of 6.5% i.e. 395 FT/NM is required up to 3000 FT. If unable to comply, inform ATC. MAX 205 KT IAS during first turn and turn at KR402.	FL 100	As instructed by Kirkenes TWR
<b>SIVNU 1E</b> (SIVNU ONE ECHO DEPARTURE)	Climb on course 056°. At 2000 FT turn left DCT KR402, to SIVNU.	A MNM climb gradient of 6.5% i.e. 395 FT/NM is required up to 3000 FT. If unable to comply, inform ATC. MAX 205 KT IAS during first turn and turn at KR402.	FL 100	As instructed by Kirkenes TWR
<b>VADLA 1E</b> (VADLA ONE ECHO DEPARTURE)	Climb on course 056°. At 2000 FT turn left DCT KR402, to VADLA.	A MNM climb gradient of 6.5% i.e. 395 FT/NM is required up to 3000 FT. If unable to comply, inform ATC. MAX 205 KT IAS during first turn and turn at KR402.	FL 100	As instructed by Kirkenes TWR
<b>VANOS 1E</b> (VANOS ONE ECHO DEPARTURE)	Climb on course 056°. At 2000 FT turn left DCT KR402, to KR403, to VANOS.	A MNM climb gradient of 6.5% i.e. 395 FT/NM is required up to 3000 FT. If unable to comply, inform ATC. MAX 205 KT IAS during first turn and turn at KR402.	FL 100	As instructed by Kirkenes TWR
<b>OMNI 1E</b> (OMNI-DIRECTIONAL ONE ECHO DEPARTURE)	Climb on course 056°. At 2000 FT start turn in accordance with ATC clearance.	A MNM climb gradient of 7.2% i.e. 437 FT/NM is required up to 3000 FT. If unable to comply, inform ATC. MAX 205 KT IAS during initial departure turn.	As cleared by ATC	As instructed by Kirkenes TWR