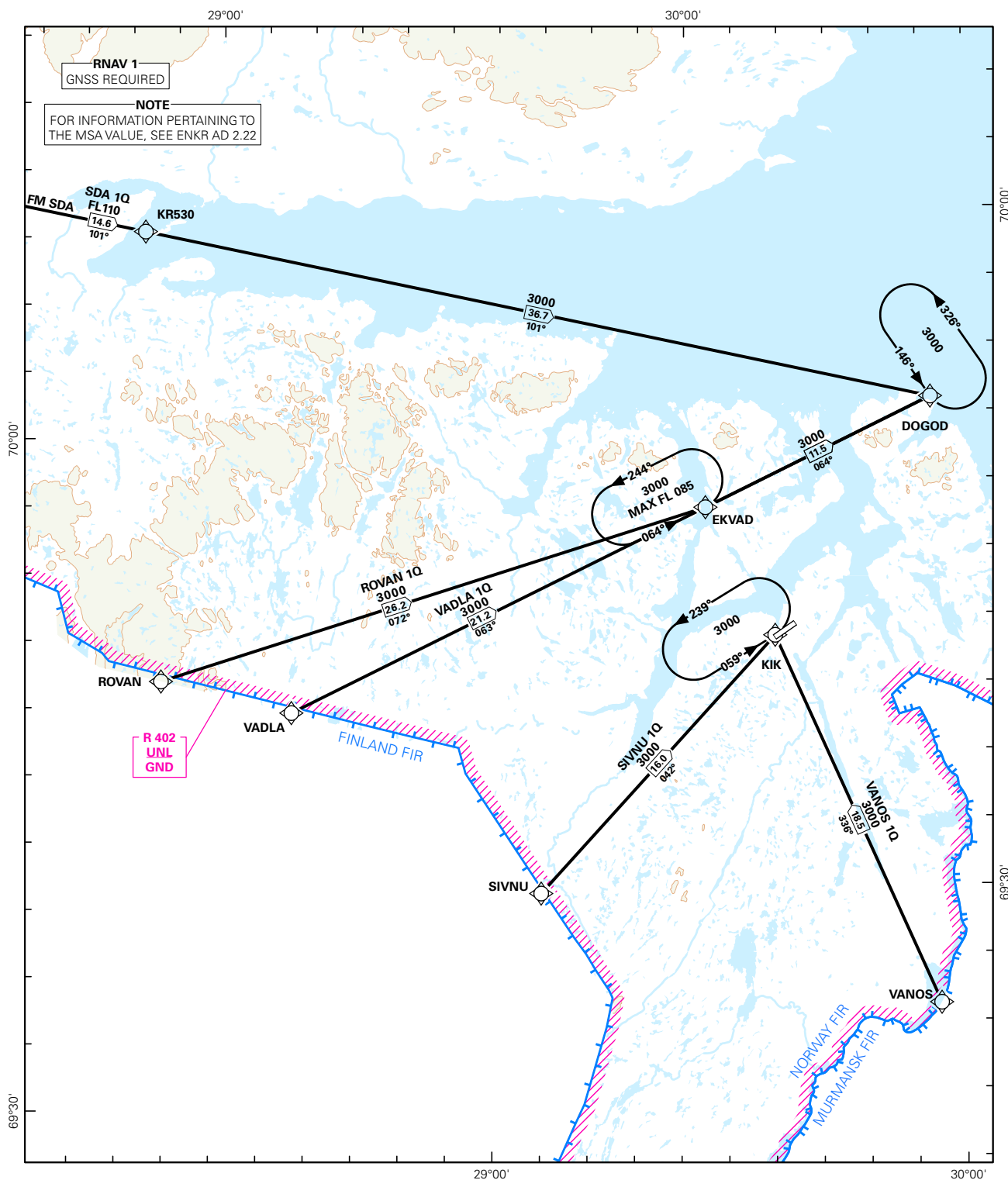


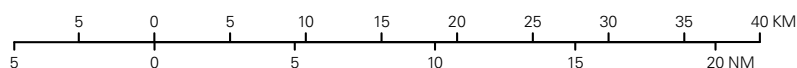
## STANDARD ARRIVAL CHART INSTRUMENT (RNAV 1 STAR BASED ON GNSS)

<div><div></div><div>3<sub>2</sub></div></div> <div>MSA 25 NM ARP</div>	ATIS: 118.025	ALT AND ELEV ARE IN FT DIST IN NM			KIRKENES/ HØYBUKTMOEN RWY 24 NORWAY
	APP: -				
	TWR: 120.350 118.100 (122.100)				
	VDF: 120.350	1:500 000	VAR: 13.4 ° E (2010)	TA 7000	
	ROVAN 1Q, SDA 1Q, SIVNU 1Q, VADLA 1Q, VANOS 1Q				



STAR DESCRIPTION OVERLEAF  
DESCRIPTION OF WAYPOINTS, REF ENR 4.4

ATS AIRSPACE CLASSIFICATIONS: REF ENR 1.4  
LEGEND: REF GEN 2.3



CHANGES: SOXIL 1Q REPLACED WITH SDA 1Q.

**STANDARD ARRIVAL ROUTES – INSTRUMENT  
(RNAV 1 STAR BASED ON GNSS)**
**KIRKENES/Høybuktmoen  
RWY 24**

**GENERAL:** Class A GNSS shall not be used.  
Surveillance service shall be available.

**LOSS OF RNAV 1 CAPABILITY:** State “UNABLE RNAV 1 DUE (reason)”. Request vectoring.

**VECTORIZING:** When appropriate, vectors will be used for sequencing to final.

**RADIO COMMUNICATION FAILURE:** Squawk A7600. Proceed on STAR and start APCH to RWY 24.

DESIGNATOR	ROUTE	RESTRICTIONS	DESCEND	CLEARANCE LIMIT
<b>ROVAN 1Q</b> (ROVAN ONE QUEBEC ARRIVAL)	From ROVAN to EKVAD, to DOGOD	Cross ROVAN at or above FL 100. Cross EKVAD at or above 3000 FT. Cross DOGOD at or above 3000 FT.	As cleared by ATC	DOGOD
<b>SDA 1Q</b> (SEIDA ONE QUEBEC ARRIVAL)	From SDA to KR530, to DOGODS	Cross SDA at or above FL 110. Cross KR530 at or above FL 110. Cross DOGOD at or above 3000 FT.	As cleared by ATC	DOGOD
<b>SIVNU 1Q</b> (SIVNU ONE QUEBEC ARRIVAL)	From SIVNU to KIK	Cross SIVNU at or above 5000 FT. Cross KIK at or above 3000 FT.	As cleared by ATC	KIK
<b>VADLA 1Q</b> (VADLA ONE QUEBEC ARRIVAL)	From VADLA to EKVAD, to DOGOD	Cross VADLA at or above 7000 FT. Cross EKVAD at or above 3000 FT. Cross DOGOD at or above 3000 FT.	As cleared by ATC	DOGOD
<b>VANOS 1Q</b> (VANOS ONE QUEBEC ARRIVAL)	From VANOS to KIK	Cross VANOS at or above 8000 FT. Cross KIK at or above 3000 FT.	As cleared by ATC	KIK