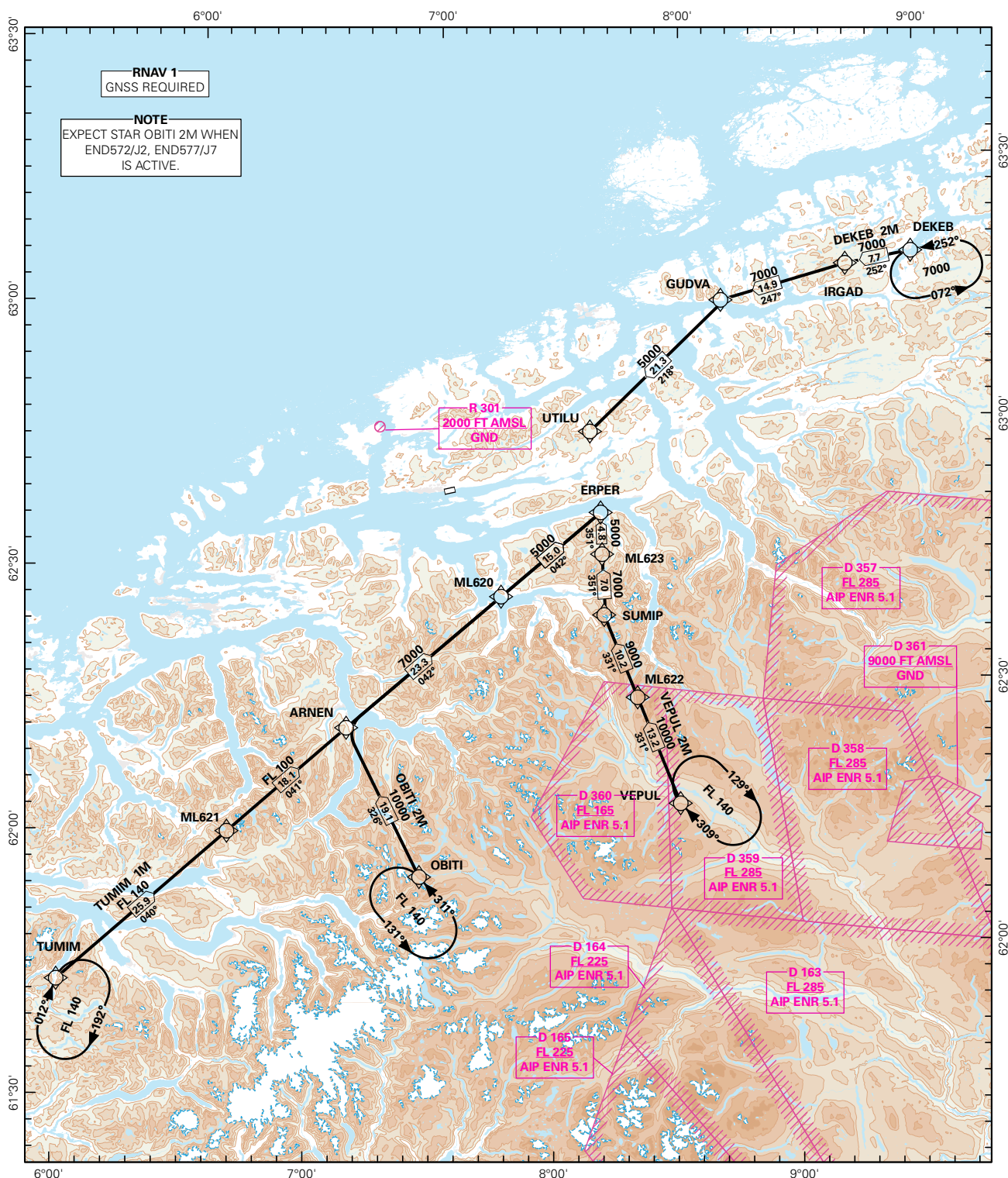


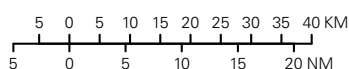
STANDARD ARRIVAL CHART INSTRUMENT (RNAV 1 STAR BASED ON GNSS)

<div style="border: 1px solid black; border-radius: 50%; width: 80px; height: 80px; display: flex; align-items: center; justify-content: center; margin: 0 auto;"> <div style="font-size: 2em; font-weight: bold;">7₂</div> </div> <div style="text-align: center; margin-top: 5px;">MSA 25 NM ARP</div>	ATIS: 130.075	ALT AND ELEV ARE IN FT DIST IN NM		1:1 250 000 VAR: 1.1 ° E (2015) TA 7000		MOLDE/ÅRØ RWY 25 NORWAY DEKEB 2M, OBITI 2M, TUMIM 1M, VEPUL 2M
	APP: 119.350					
	AFIS: 119.950					
	VDF: 119.950					



STAR DESCRIPTION OVERLEAF
DESCRIPTION OF WAYPOINTS, REF ENR 4.4

ATS AIRSPACE CLASSIFICATIONS: REF ENR 1.4
LEGEND: REF GEN 2.3



CHANGES: NOTEBOOK AMENDED, EDITORIALS.

**STANDARD ARRIVAL ROUTES - INSTRUMENT
(RNAV 1 STAR BASED ON GNSS)**
**MOLDE/Årø
RWY 25**

GENERAL: Class A GNSS shall not be used.
Surveillance service shall be available.

LOSS OF RNAV 1 CAPABILITY: Request vectoring.

VECTORING: Vectoring may be used for sequencing.

RADIO COMMUNICATION FAILURE: Squawk A7600. Proceed on STAR and make APCH to RWY 25.

DESIGNATOR	ROUTE	RESTRICTIONS	DESCEND	CLEARANCE LIMIT
DEKEB 2M (DEKEB TWO MIKE ARRIVAL)	From DEKEB, to IRGAD, to GUDVA, to UTILU.	Cross DEKEB at or above 7000 FT. Cross IRGAD at or above 7000 FT. Cross GUDVA at or above 7000 FT. Cross UTILU at or above 5000 FT.	As cleared by ATC.	UTILU
OBITI 2M (OBITI TWO MIKE ARRIVAL)	From OBITI, to ARNEN, to ML620, to ERPER.	Cross OBITI at or above FL 140. Cross ARNEN at or above 10 000 FT. Cross ML620 at or above 7000 FT. Cross ERPER at or above 5000 FT.	As cleared by ATC.	ERPER
TUMIM 1M (TUMIM ONE MIKE ARRIVAL)	From TUMIM, to ML621, to ARNEN, to ML620, to ERPER.	Cross ML621 at or above FL 140. Cross ARNEN at or above FL 100. Cross ML620 at or above 7000 FT. Cross ERPER at or above 5000 FT.	As cleared by ATC.	ERPER
VEPUL 2M (VEPUL TWO MIKE ARRIVAL)	From VEPUL, to ML622, to SUMIP, to ML623, to ERPER.	Cross VEPUL at or above FL 140. Cross ML622 at or above 10 000 FT. Cross SUMIP at or above 9000 FT. Cross ML623 at or above 7000 FT. Cross ERPER at or above 5000 FT.	As cleared by ATC.	ERPER