

INSTRUMENT APPROACH CHART - ICAO PLAN VIEW SCALE: 1:350 000

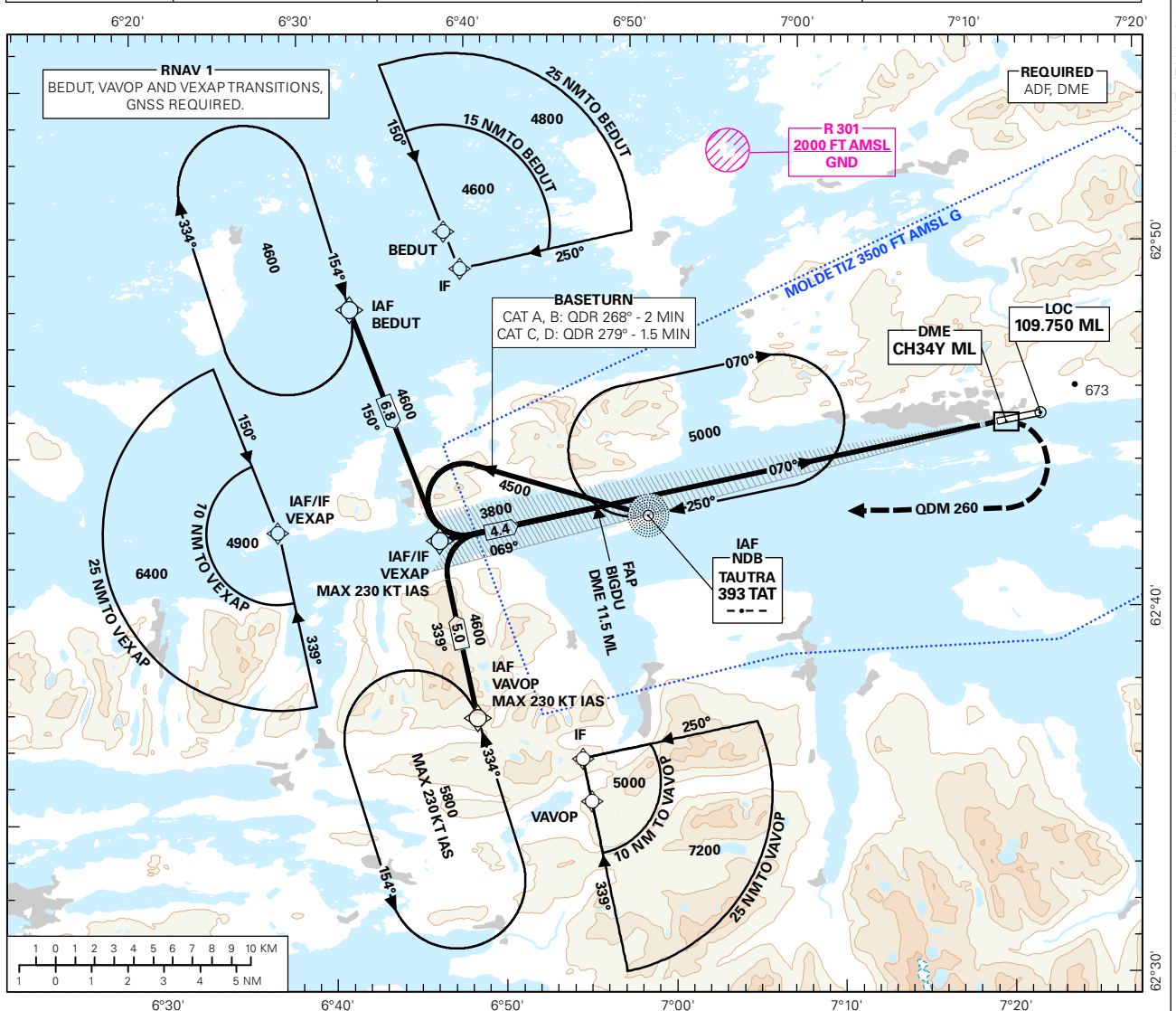
MOLDE

ÅRØ

ILS W RWY 07

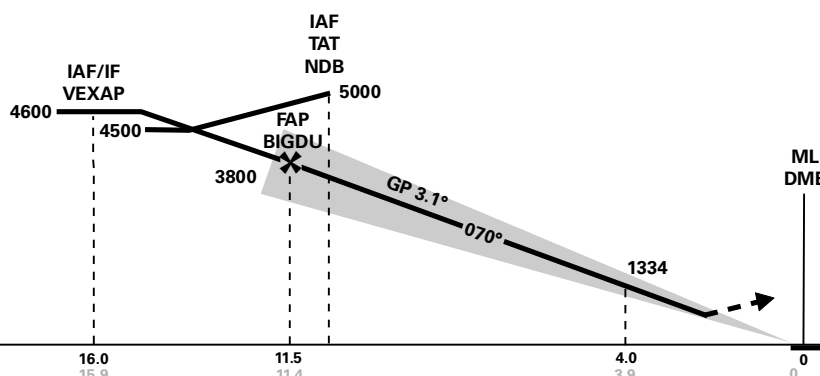
TRANSITION ALTITUDE
7000

ATIS: 130.075	AD ELEV: 10	
APP: 119.350	THR ELEV: 10	DIST IN NM
AFIS: 119.950	HGT RELATED TO THR RWY 07	ELEV, ALT AND HGT IN FT
VDF: 119.950	CIRCLING HGT RELATED TO AD ELEV	
BEARINGS ARE MAGNETIC - VAR 1.1 ° E (2015)		



DIST TO ML	9	8	7	6	5	4	3	2
ALT (HGT)	3036 (3026)	2692 (2682)	2350 (2340)	2009 (1999)	1671 (1661)	1334 (1324)	999 (989)	666 (656)

ILS RDH 54



MISSED APCH:
CLIMB ON COURSE 070° TO 500. TURN RIGHT TO INTERCEPT AND FOLLOW QDM 260° TO TAT. IF BELOW 4100 AT TAT, CONTINUE CLIMB ON QDR 276°. AT 4100 TURN LEFT DCT TAT. ENTER TAT HLDG CLIMBING TO 5000.

NO TURN BEFORE DME 1.0 BEFORE ML. MAX 185 KT IAS DURING INITIAL TURN.

CAT OF ACFT	A	B	C	D	FINAL APCH	DIST FAF - THR: 11.4					
	990 (980)	1000 (990)	1010 (1000)	1020 (1010)		KT	70	90	120	150	180
OCA(H) STRAIGHT - IN	CAT I 2.5%* 425 (415)	435 (425)	445 (435)	455 (445)	SPEED	MIN:SEC	-	-	-	-	-
CIRCLING	790 (780)	1300 (1290)	1660 (1650)	1710 (1700)	TIME	FT/MIN	385	495	660	825	990

NOTE: CIRCLING S OF AD ONLY. *MNM MISSED APCH CLIMB GRADIENT.

CHANGES: ENML TZ, EDITORIALS.